

**AERODROME CHART - ICAO**

**10° 42' 40" N  
099° 21' 42" E**

**ELEV 22 FT**

**TWR 122.15  
236.6**

**CHUMPHON / Chumphon**

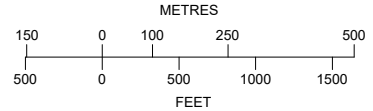
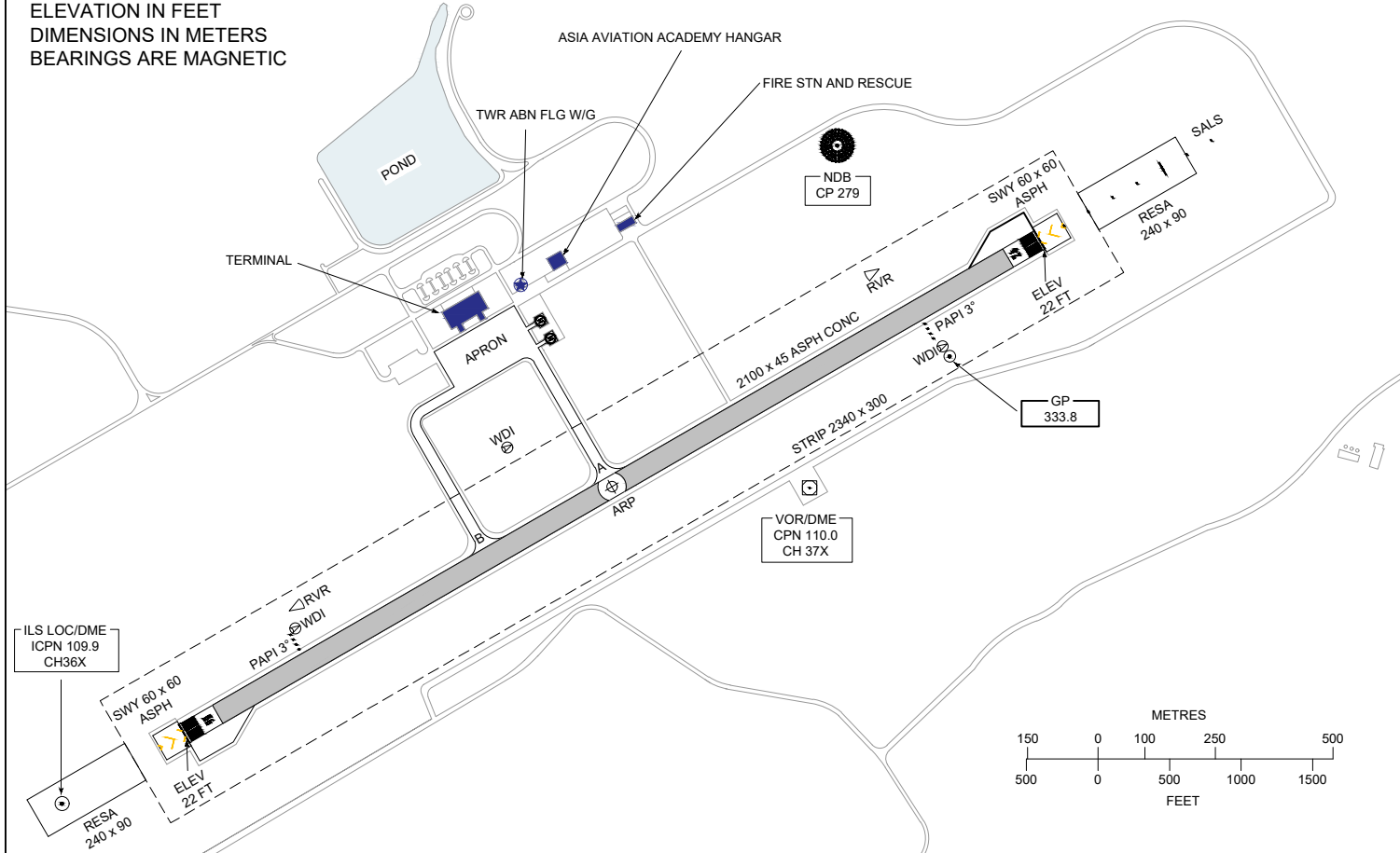
RWY	DIRECTION	THR	BEARING STRENGTH
06	061°	10° 42' 23" N 099° 21' 12" E	PCN 42/F/C/X/T
24	241°	10° 42' 57" N 099° 22' 12" E	
APRON			PCN 45/R/C/X/T
TAXIWAY A AND B			PCN 42/F/C/X/T

**REMARKS:**

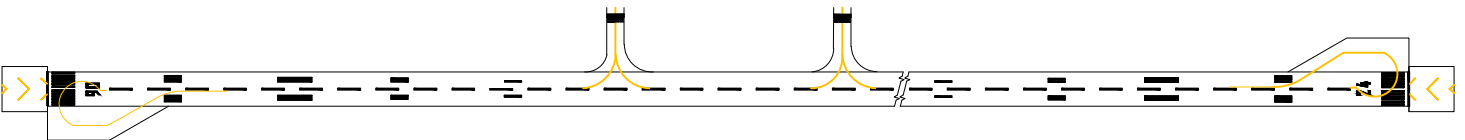
- DETAILS OF AIRCRAFT STANDS ARE SHOWN IN AIRCRAFT PARKING/DOCKING CHART
- HOT SPOTS SHOWN IN AERODROME GROUND MOVEMENT CHART
- TAXIWAY WIDTH 23 m.

VAR 0° 30' W (2025)  
ANNUAL RATE OF CHANGE 0° 2' E

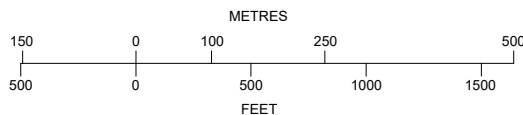
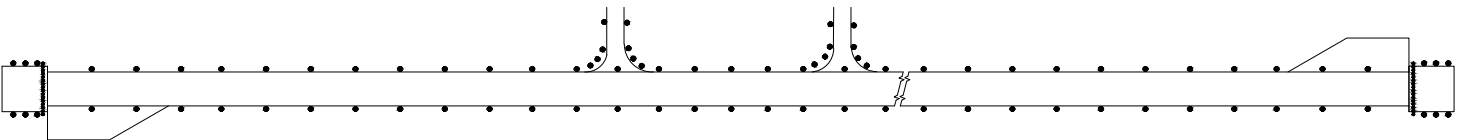
ELEVATION IN FEET  
DIMENSIONS IN METERS  
BEARINGS ARE MAGNETIC



**MARKING AIDS RWY 06/24 AND EXIT TWY**



**LIGHTING AIDS RWY 06/24 AND EXIT TWY**



CHANGE: REVISED CHART, MAG VAR, ANNUAL RATE OF CHANGE, DIRECTION, TABULAR.