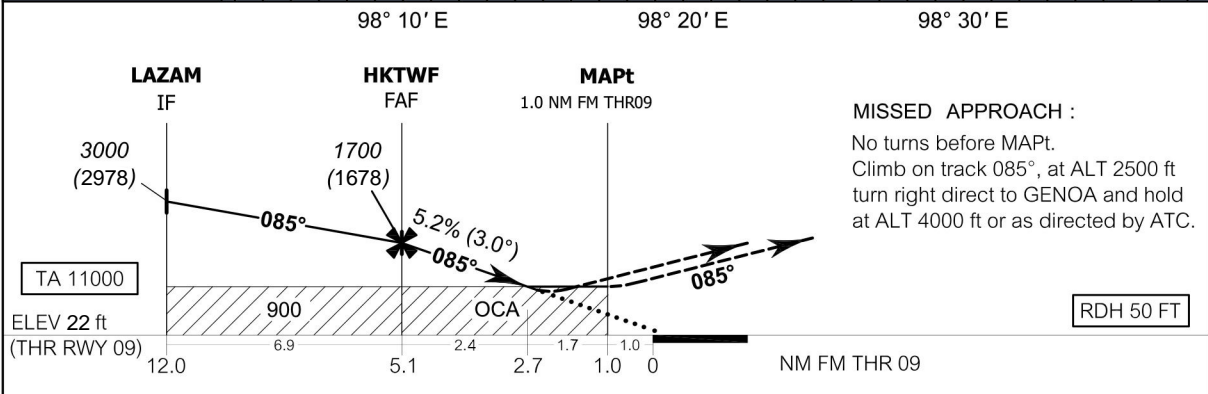
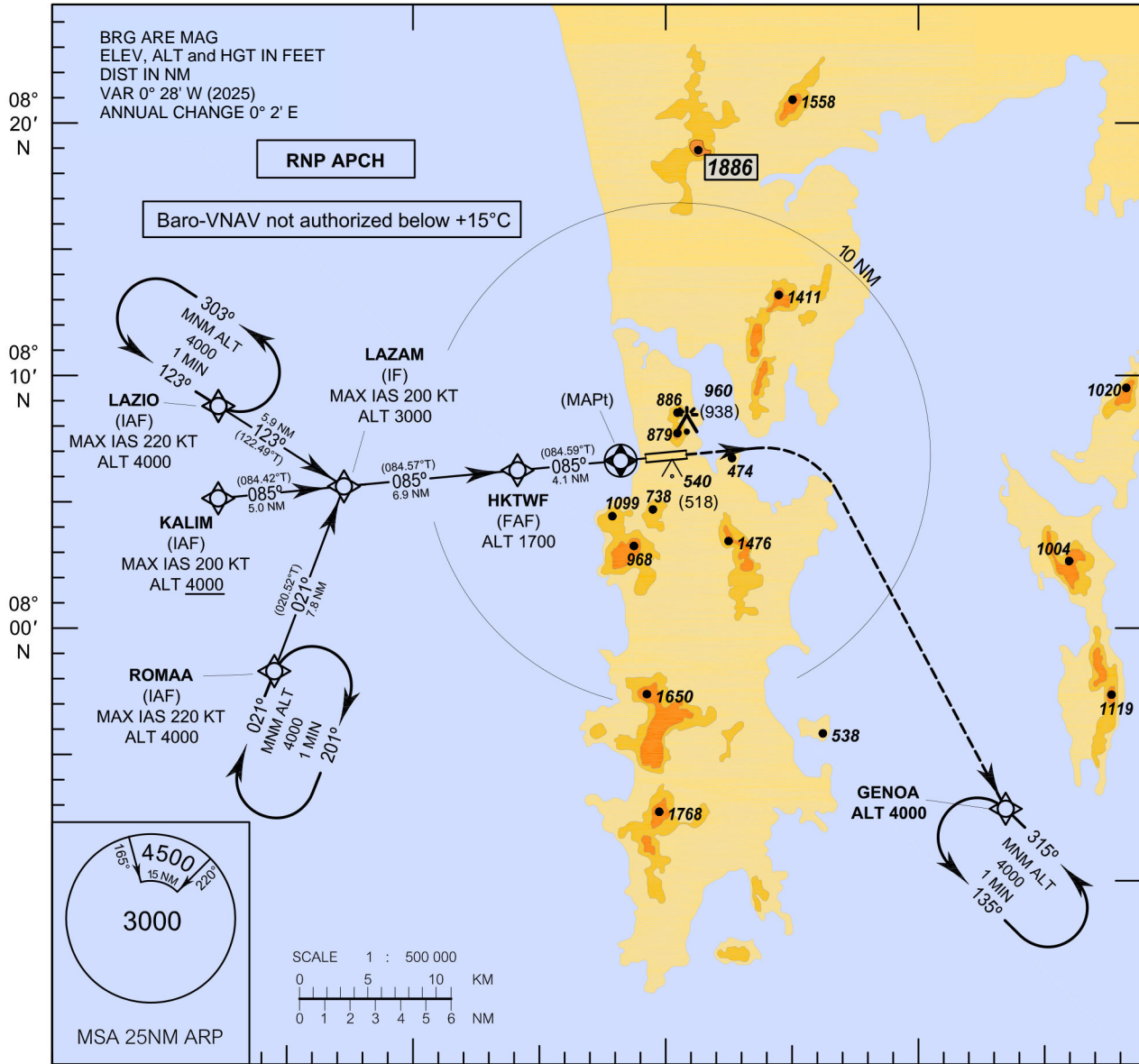


**INSTRUMENT APPROACH CHART - ICAO** **AERODROME ELEV 84 FT**  
 HEIGHTS RELATED TO THR RWY09 - ELEV 22 FT

APP : 124.7, 284.0  
 ARR : 120.7  
 TWR : 118.1, 236.6  
 GND : 121.9  
 ATIS : 128.0

**PHUKET / Phuket Intl (VTSP)**  
**RNP z RWY09**



**MISSED APPROACH :**  
 No turns before MAPt.  
 Climb on track 085°, at ALT 2500 ft turn right direct to GENOA and hold at ALT 4000 ft or as directed by ATC.

OCA/H	A	B	C	D	NM to NEXT WPT	FAF	4 NM	3 NM	2.7 NM			
LNAV/VNAV	870 (848)				Altitude (Height)	1700 (1678)	1345 (1323)	1025 (1003)	920 (898)			
LNAV	920 (898)				Ground Speed	knots	100	120	140	160	180	200
Circling (OCH AAL)	1500 (1416) *				Rate of Descent FAF-MAPt 3.0° (5.2%)	(ft/min)	530	630	740	845	950	1055

CHANGE : MAG VAR.

\* For circling restrictions see verso.