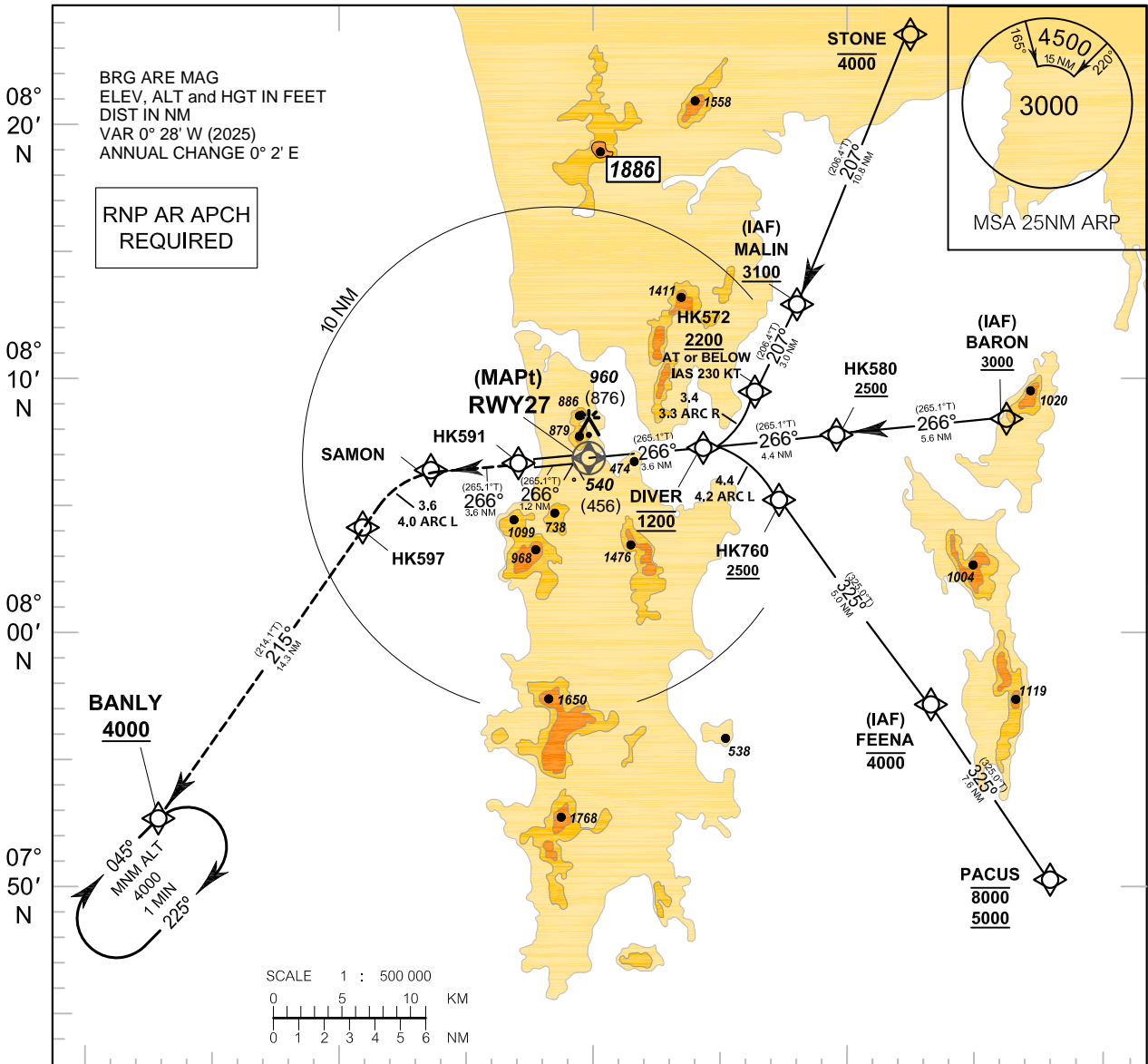


**INSTRUMENT APPROACH CHART - ICAO**  
**AERODROME ELEV 84 FT**  
**HEIGHTS RELATED TO AERODROME ELEV**

APP : 124.7, 284.0  
 ARR : 120.7  
 TWR : 118.1, 236.6  
 GND : 121.9  
 ATIS : 128.0

**PHUKET / Phuket Intl (VTSP)**

**RNP y RWY27 (AR)**



MISSED APPROACH : 98° 10' E 98° 20' E 98° 30' E  
 Climb to 4000 ft via the RNAV(RNP)  
 Missed Approach track to BANLY  
 or as directed by ATC.

- NOTES:**
- 1) Approach not authorized when airport temperature below 20°c.
  - 2) RF Required.
  - 3) VTSP altimeter setting required.
  - 4) GNSS Required.
  - 5) PAPI and vertical path angle not coincident.
  - 6) Procedure requires RNP 0.30 from IAFs to HK591.
  - 7) TOGA to Nav required.



OCA/H	C	D
RNP 0.30	780 (696)	

REMARK: 1. CIRCLING AND ALTERNATE - N/A  
 2. AREA OUTSIDE IMAGE IS NOT TO SCALE

CHANGE: MAG VAR.