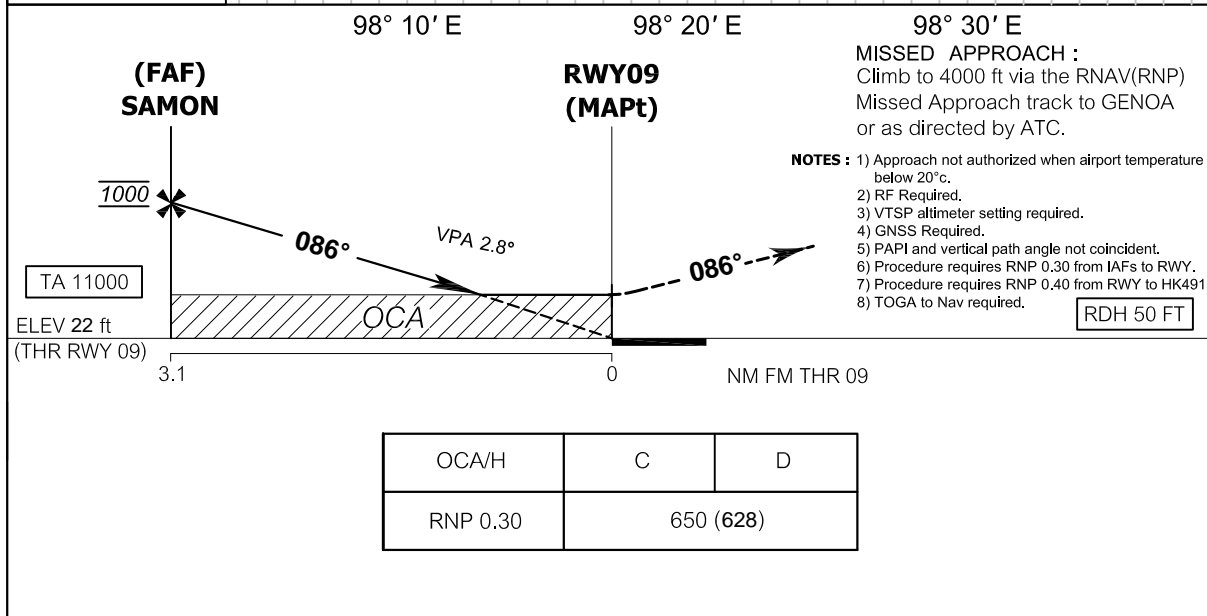
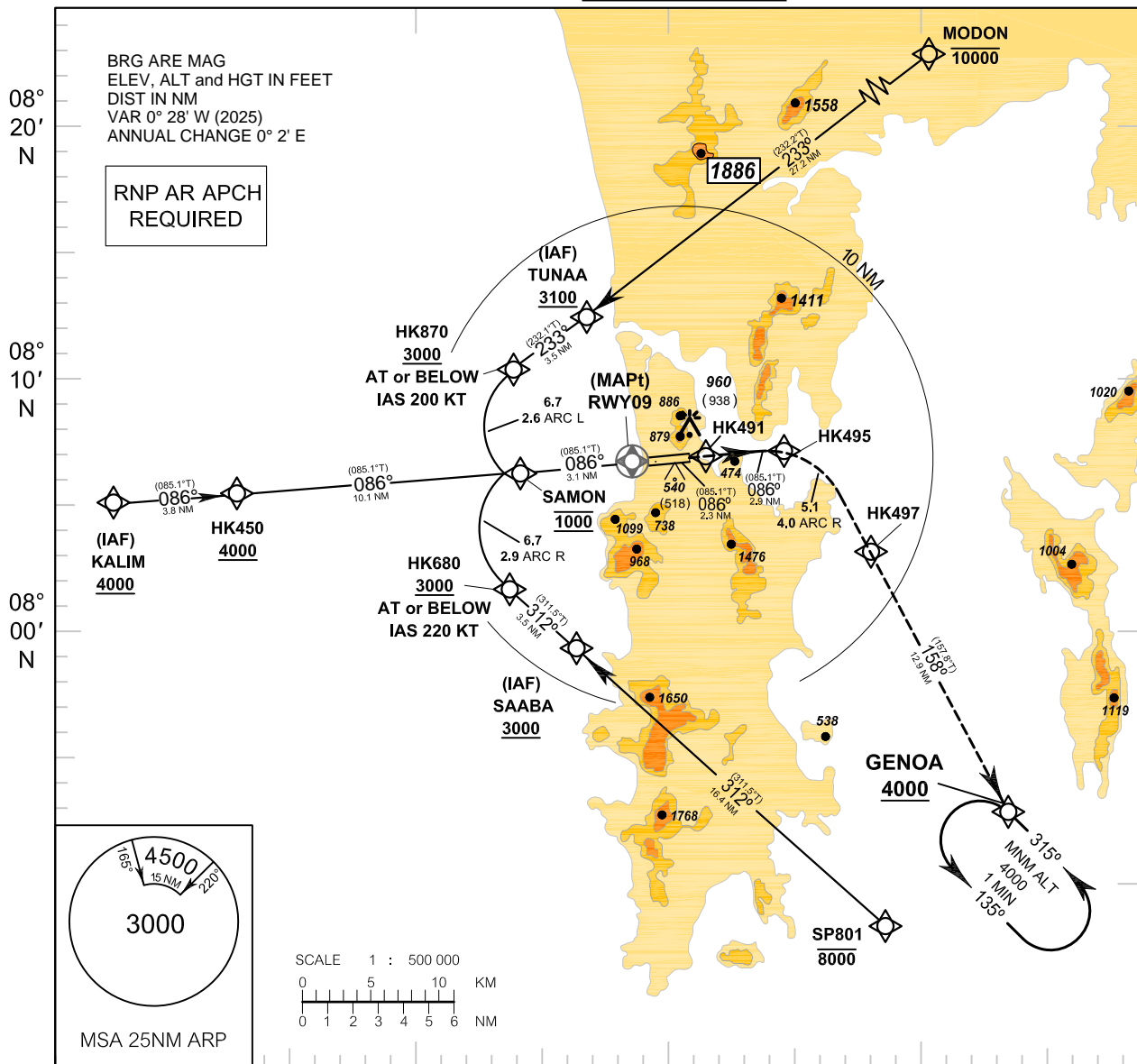


INSTRUMENT AERODROME ELEV 84 FT
APPROACH HEIGHTS RELATED TO
CHART - ICAO THR RWY09 - ELEV 22 FT

APP : 124.7, 284.0
 ARR : 120.7
 TWR : 118.1, 236.6
 GND : 121.9
 ATIS : 128.0

PHUKET / Phuket Intl (VTSP)
RNP y RWY09 (AR)



MISSED APPROACH :
 Climb to 4000 ft via the RNAV(RNP)
 Missed Approach track to GENOA
 or as directed by ATC.

- NOTES :**
- 1) Approach not authorized when airport temperature below 20°C.
 - 2) RF Required.
 - 3) VTSP altimeter setting required.
 - 4) GNSS Required.
 - 5) PAPI and vertical path angle not coincident.
 - 6) Procedure requires RNP 0.30 from IAFs to RWY.
 - 7) Procedure requires RNP 0.40 from RWY to HK491.
 - 8) TOGA to Nav required.

REMARK: 1. CIRCLING AND ALTERNATE - N/A
 2. AREA OUTSIDE IMAGE IS NOT TO SCALE

CHANGE: MAG VAR.