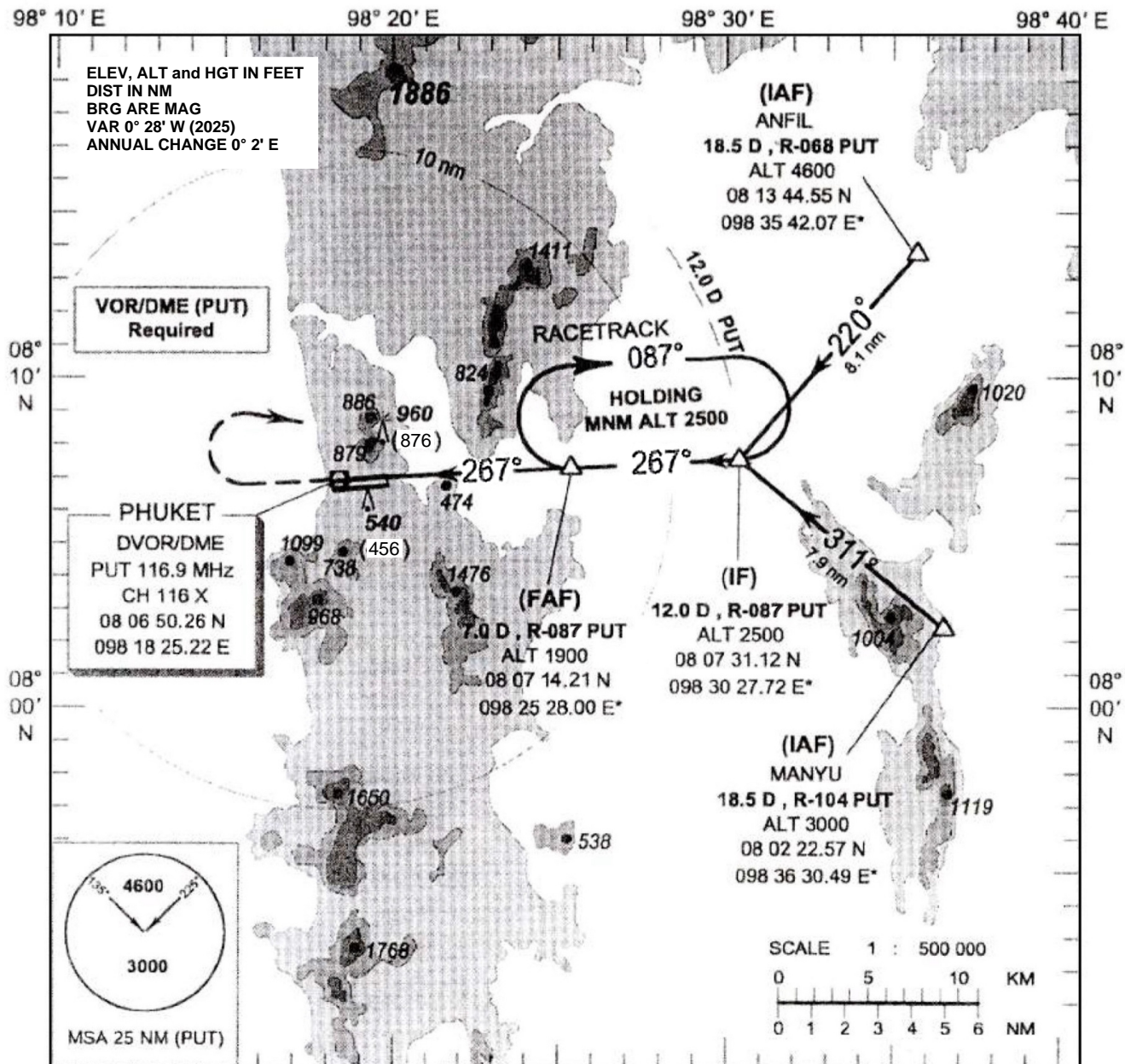


INSTRUMENT APPROACH CHART - ICAO **AERODROME ELEV 84 ft**
HEIGHTS RELATED TO AERODROME ELEV.

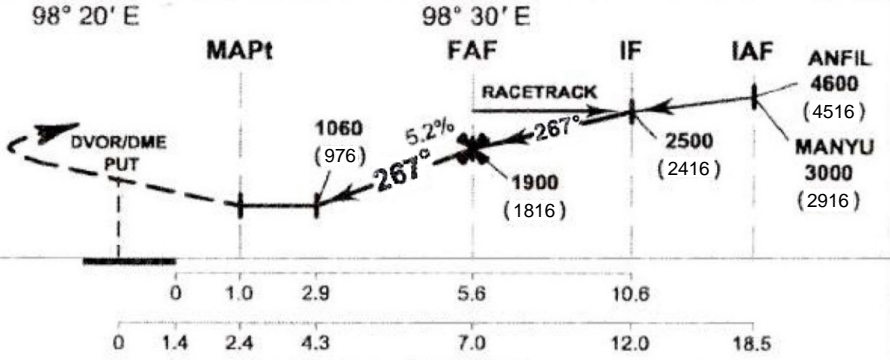
APP : 124.7, 284.0
 ARR : 120.7
 TWR : 118.1, 236.6
 GND : 121.9
 ATIS : 128.0

PHUKET / Phuket Intl (VTSP)
VOR Z RWY 27



TA 11000

MISSED APPROACH :
 Climb straight ahead to 2500 (2416) ft then turn right direct to FAF at 2500 ft (2416) and hold or as directed by ATC.



OCA/H	A	B	C	D	Distance (PUT)		5D		6D		7D	
					knot	(ft/min)	1280 (1196)	1600 (1516)	1900 (1816)	100	120	140
Straight - in approach	1060 (976)				Rate of descent	(ft/min)	530	635	745	850	955	1060
Circling (OCH AAL)	1300 (1216)		1400 (1316)		FAF-MAPT 4.6 nm (min/s)	2:46	2:18	1:59	1:44	1:32	1:23	

REMARK : Circling to the Right (North of aerodrome) only.

CHANGE : MAG VAR.