

**STANDARD ARRIVAL CHART -
INSTRUMENT (STAR) - ICAO**

TRANSITION ALTITUDE
11000

APP : 120.05
TWR : 122.5, 236.6
GND : 121.9
ATIS : 132.4

**KRABI/Krabi (VTSG)
RNAV RWY32**

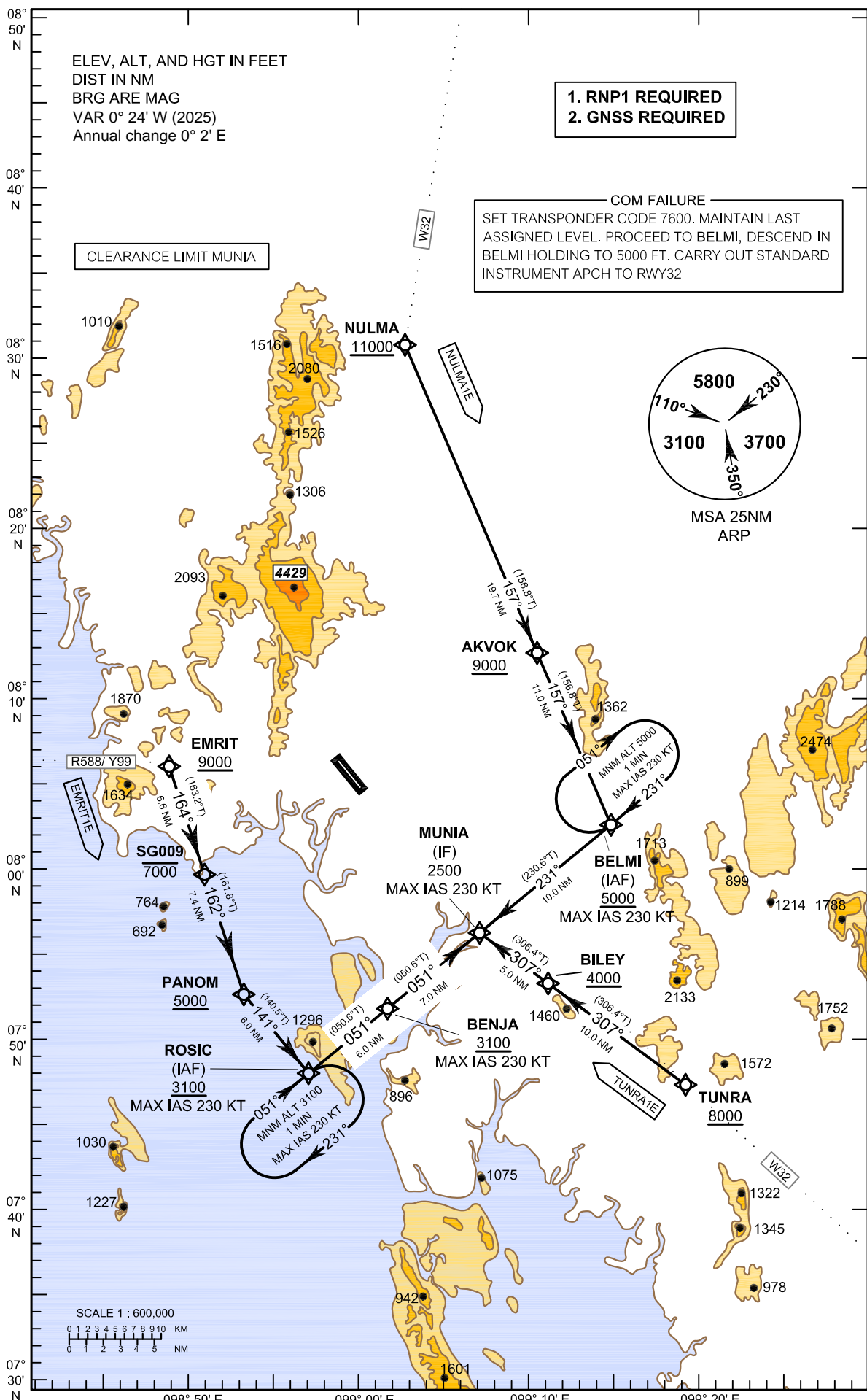
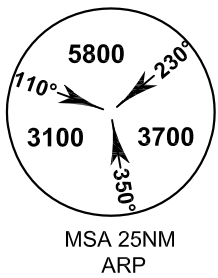
EMRIT1E NULMA1E TUNRA1E

ELEV, ALT, AND HGT IN FEET
DIST IN NM
BRG ARE MAG
VAR 0° 24' W (2025)
Annual change 0° 2' E

**1. RNP1 REQUIRED
2. GNSS REQUIRED**

COM FAILURE
SET TRANSPONDER CODE 7600. MAINTAIN LAST
ASSIGNED LEVEL. PROCEED TO BELMI, DESCEND IN
BELMI HOLDING TO 5000 FT. CARRY OUT STANDARD
INSTRUMENT APCH TO RWY32

CLEARANCE LIMIT MUNIA



SCALE 1 : 600,000
0 1 2 3 4 5 6 7 8 9 10 KM
0 1 2 3 4 5 NM

CHANGE: MAG VAR.