

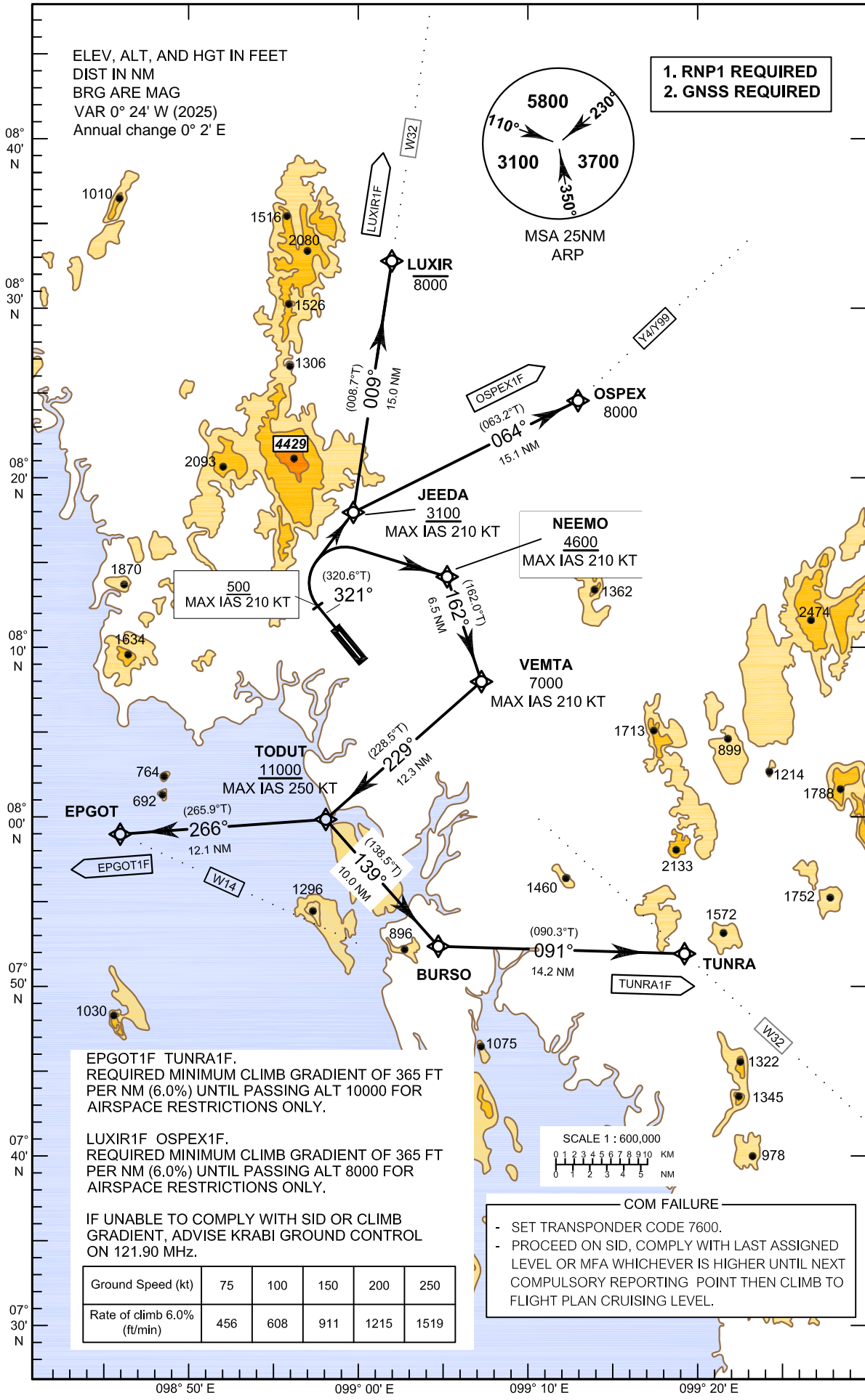
**STANDARD DEPARTURE CHART -
INSTRUMENT (SID) - ICAO**

TRANSITION ALTITUDE
11000

APP : 120.05
TWR : 122.5, 236.6
GND : 121.9
ATIS : 132.4

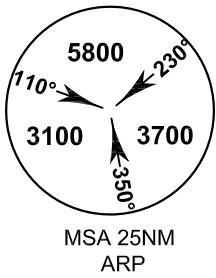
**KRABI/Krabi (VTSG)
RNAV RWY32**

EPGOT1F LUXIR1F
OSPEX1F TUNRA1F



ELEV, ALT, AND HGT IN FEET
DIST IN NM
BRG ARE MAG
VAR 0° 24' W (2025)
Annual change 0° 2' E

**1. RNP1 REQUIRED
2. GNSS REQUIRED**



500
MAX IAS 210 KT

JEEDA
3100
MAX IAS 210 KT

NEEMO
4600
MAX IAS 210 KT

VEMTA
7000
MAX IAS 210 KT

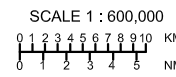
TODUT
11000
MAX IAS 250 KT

EPGOT1F TUNRA1F.
REQUIRED MINIMUM CLIMB GRADIENT OF 365 FT
PER NM (6.0%) UNTIL PASSING ALT 10000 FOR
AIRSPACE RESTRICTIONS ONLY.

LUXIR1F OSPEX1F.
REQUIRED MINIMUM CLIMB GRADIENT OF 365 FT
PER NM (6.0%) UNTIL PASSING ALT 8000 FOR
AIRSPACE RESTRICTIONS ONLY.

IF UNABLE TO COMPLY WITH SID OR CLIMB
GRADIENT, ADVISE KRABI GROUND CONTROL
ON 121.90 MHz.

Ground Speed (kt)	75	100	150	200	250
Rate of climb 6.0% (ft/min)	456	608	911	1215	1519



COM FAILURE

- SET TRANSPONDER CODE 7600.
- PROCEED ON SID, COMPLY WITH LAST ASSIGNED LEVEL OR MFA WHICHEVER IS HIGHER UNTIL NEXT COMPULSORY REPORTING POINT THEN CLIMB TO FLIGHT PLAN CRUISING LEVEL.

CHANGE: MAG VAR.