

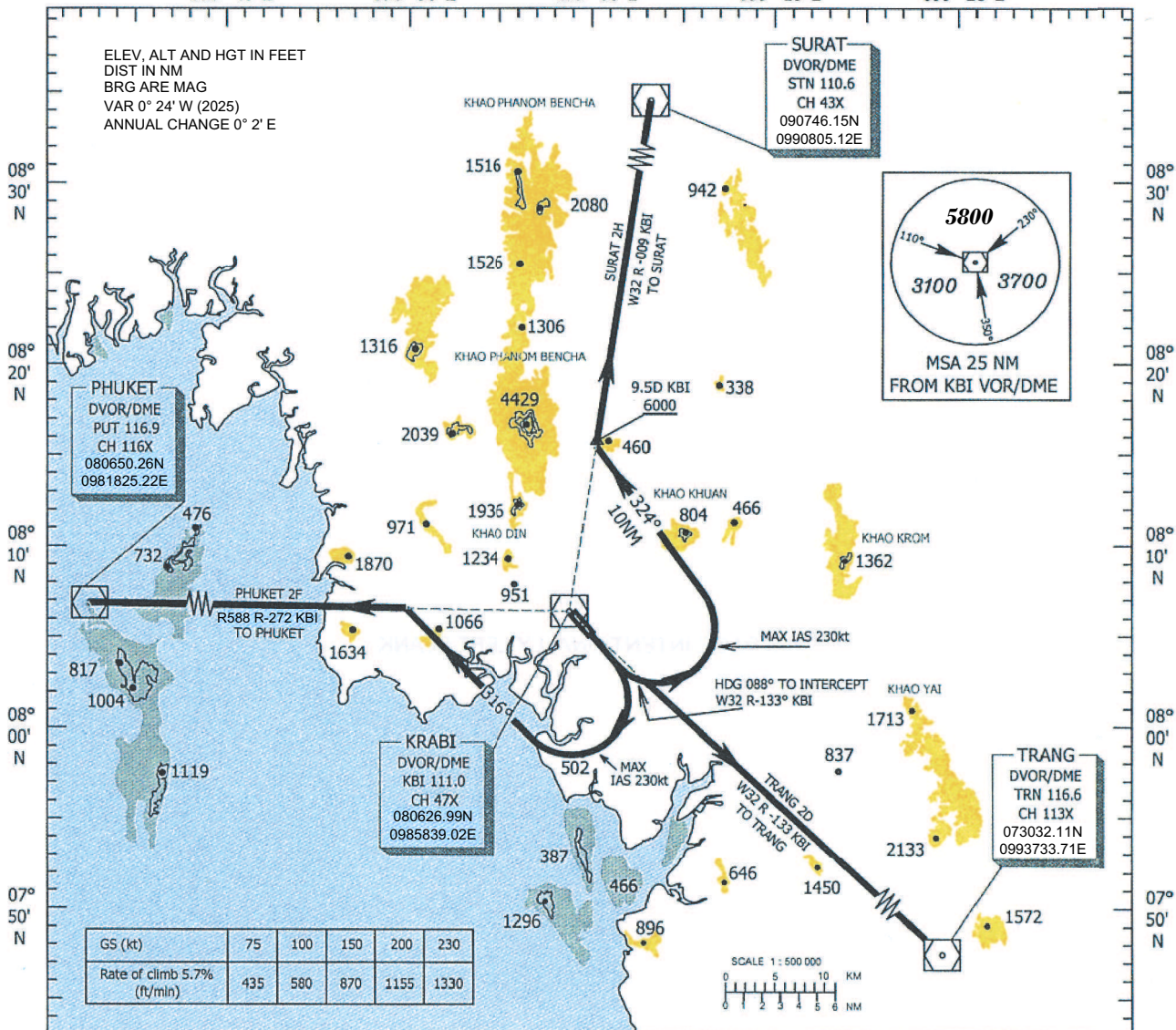
SURAT 2H DEPARTURE
TRANG 2D DEPARTURE
PHUKET 2F DEPARTURE

STANDARD INSTRUMENT DEPARTURE (SID)
CHART - ICAO

TRANSITION ALTITUDE
11 000 ft

APP : 120.05
TWR : 122.5, 236.6
GND : 121.9
ATIS : 132.4

098° 40' E 098° 50' E 099° 00' E 099° 10' E 099° 20' E



COMMUNICATION FAILURE PROCEDURE
- Squawk A7600
- Comply with last assigned level until next reporting point then climb to flight plan cruising level.

WARNING
- No turn before Departure End of Runway
- Min Procedure Design Gradient = 5.7 %
- Max IAS 230kt for turning after departure

SURAT TWO HOTEL : (SURAT 2H)
Climb on runway heading until 800ft , then continue climbing turn left heading 324° to intercept and proceed along KBI R-009 outbound and maintain 6000ft or above at 9.5D KBI to SURAT DVOR/DME

TRANG TWO DELTA : (TRANG 2D)
Climb on runway heading until 800ft , then continue climbing turn left heading 088° to intercept and proceed along KBI R-133 to TRANG DVOR/DME

PHUKET TWO FOXTROT : (PHUKET 2F)
Climb on runway heading until 800ft , then continue climbing turn right heading 316° to intercept and proceed along KBI R-272 outbound to PHUKET DVOR/DME

CHANGE: MAG VAR.