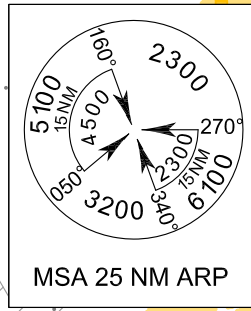
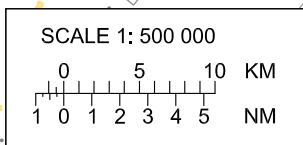
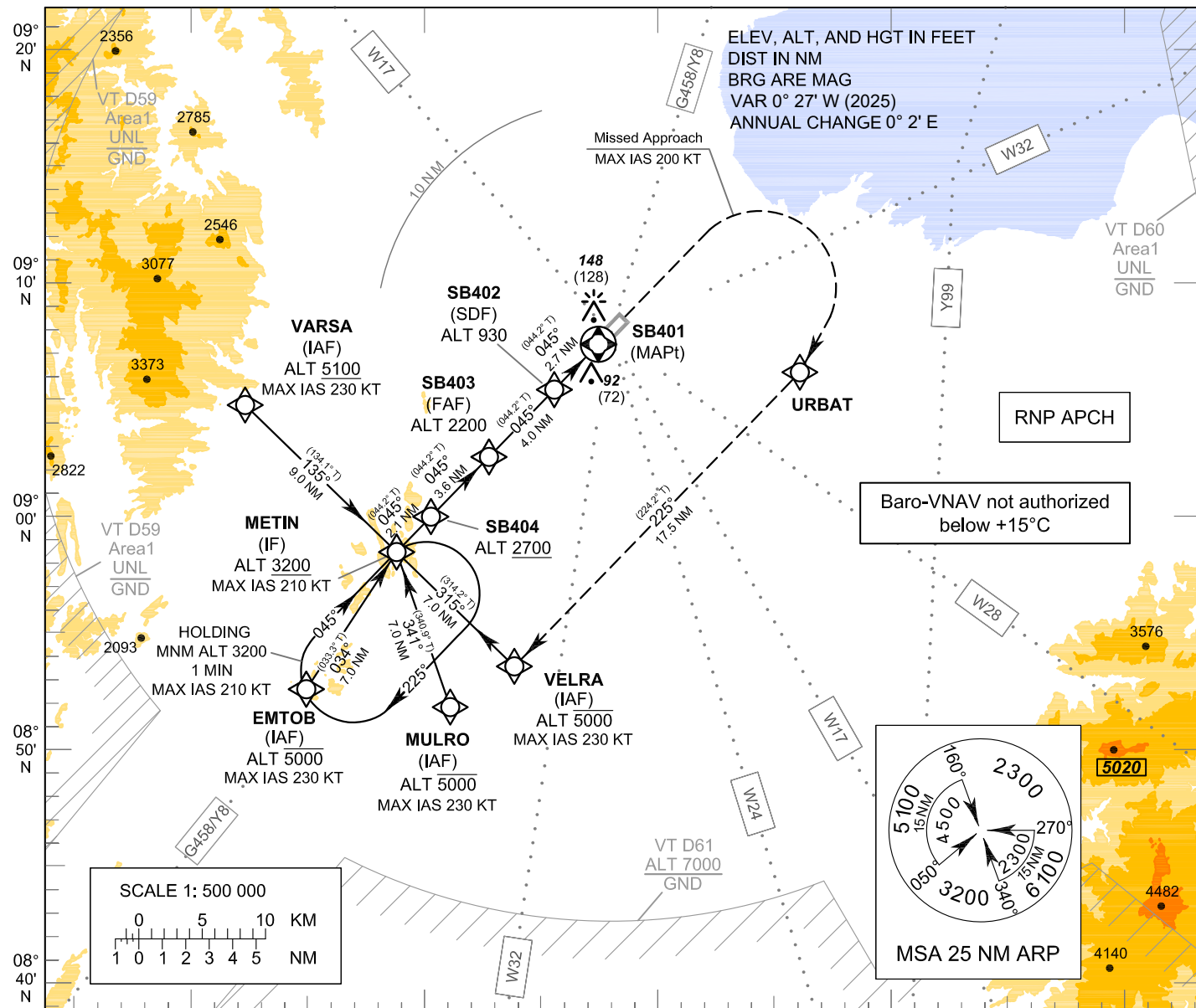


**INSTRUMENT
APPROACH
CHART - ICAO**

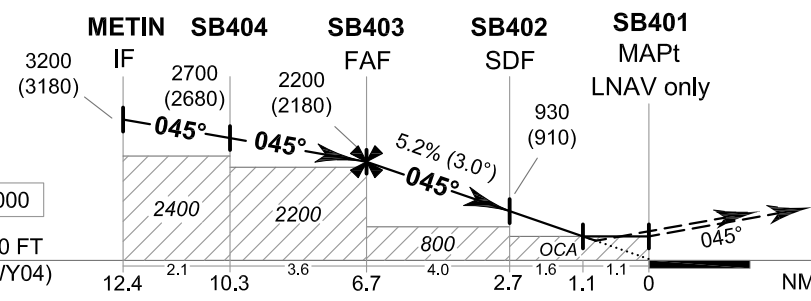
**AERODROME ELEV 20 FT
HEIGHTS RELATED TO
THR RWY04 - ELEV 20 FT**

APP : 123.35 , 240.0
TWR : 122.7 , 274.5
GND : 121.9 , 275.8
ATIS : 125.95

SURAT THANI / Surat Thani (VTBS)
RNP RWY04



098° 50' E 099° 00' E 099° 10' E 099° 20' E 099° 30' E



MISSED APPROACH:
No turn before MAPt.
Speed restricted to MAX IAS 200 KT until after turn.
Climb on track 045° to 1200 FT, then turn right direct to URBAT. Continue to VELRA then METIN at 3200 FT and hold or as directed by ATC.

CHANGE: MAG VAR.

OCA/H	A	B	C	D	NM to NEXT WPT	FAF	6 NM	5 NM	4 NM	3 NM	2 NM	1.1 NM
LNAV / VNAV	340 (320)				Altitude (Height)	2200 (2180)	1965 (1945)	1650 (1630)	1335 (1315)	1020 (1000)	700 (680)	420 (400)
LNAV	420 (400)				Ground speed	knot	70	90	100	120	140	160
Circling (OCH AAL)	860 (840)				Rate of descent FAF-MAPt 5.2%	ft/min	369	474	527	632	737	843