

**STANDARD ARRIVAL CHART-  
INSTRUMENT (STAR) - ICAO**

TRANSITION ALTITUDE  
11000 FT

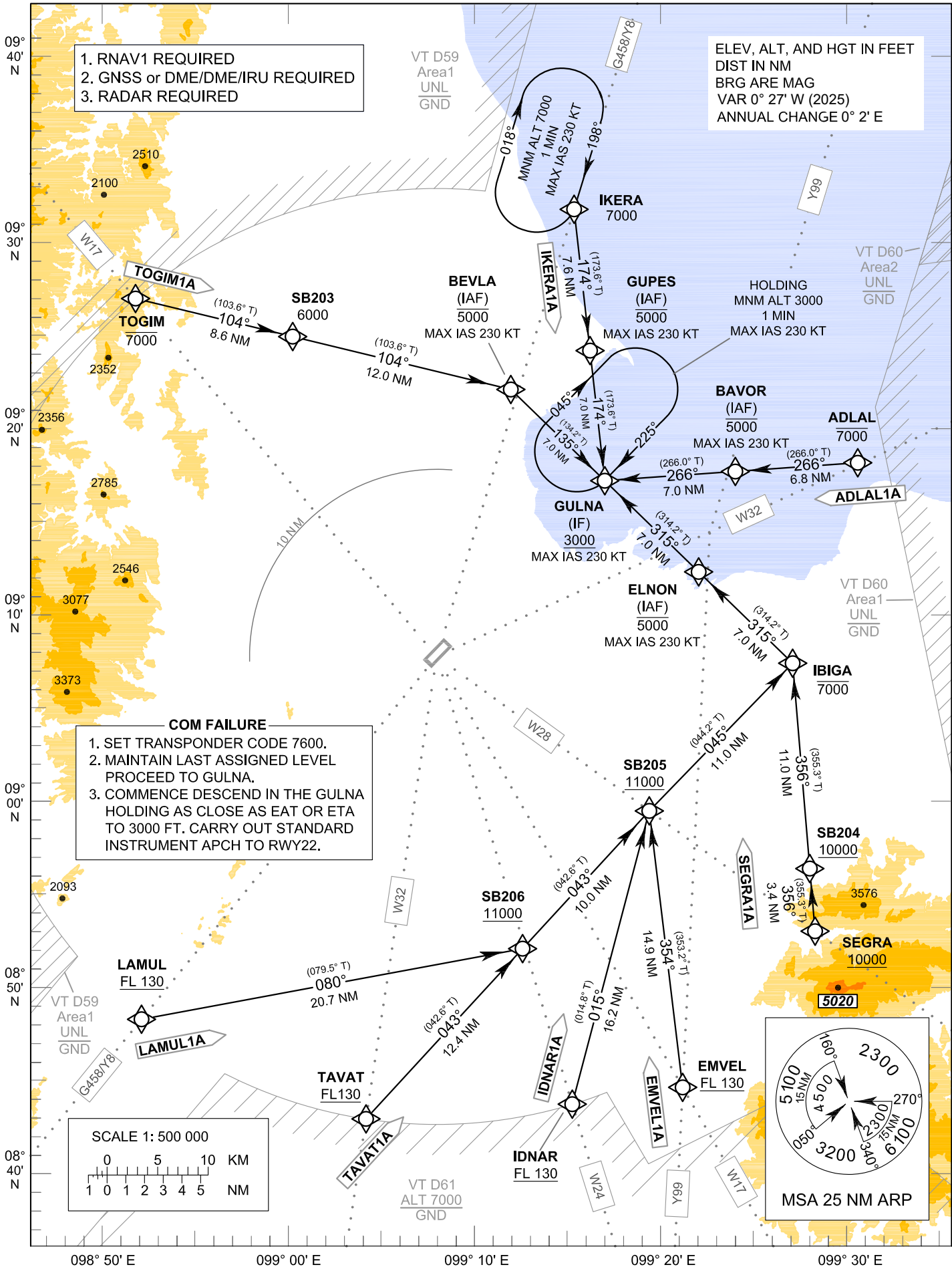
APP : 123.35 , 240.0  
TWR : 122.7 , 274.5  
GND : 121.9 , 275.8  
ATIS : 125.95

**SURAT THANI / Surat Thani (VTSB)  
RNAV RWY22**

ADLAL1A EMVEL1A IDNAR1A IKERA1A  
LAMUL1A SEGRA1A TAVAT1A TOGIM1A

1. RNAV1 REQUIRED
2. GNSS or DME/DME/IRU REQUIRED
3. RADAR REQUIRED

ELEV, ALT, AND HGT IN FEET  
DIST IN NM  
BRG ARE MAG  
VAR 0° 27' W (2025)  
ANNUAL CHANGE 0° 2' E



CHANGE: MAG VAR.