

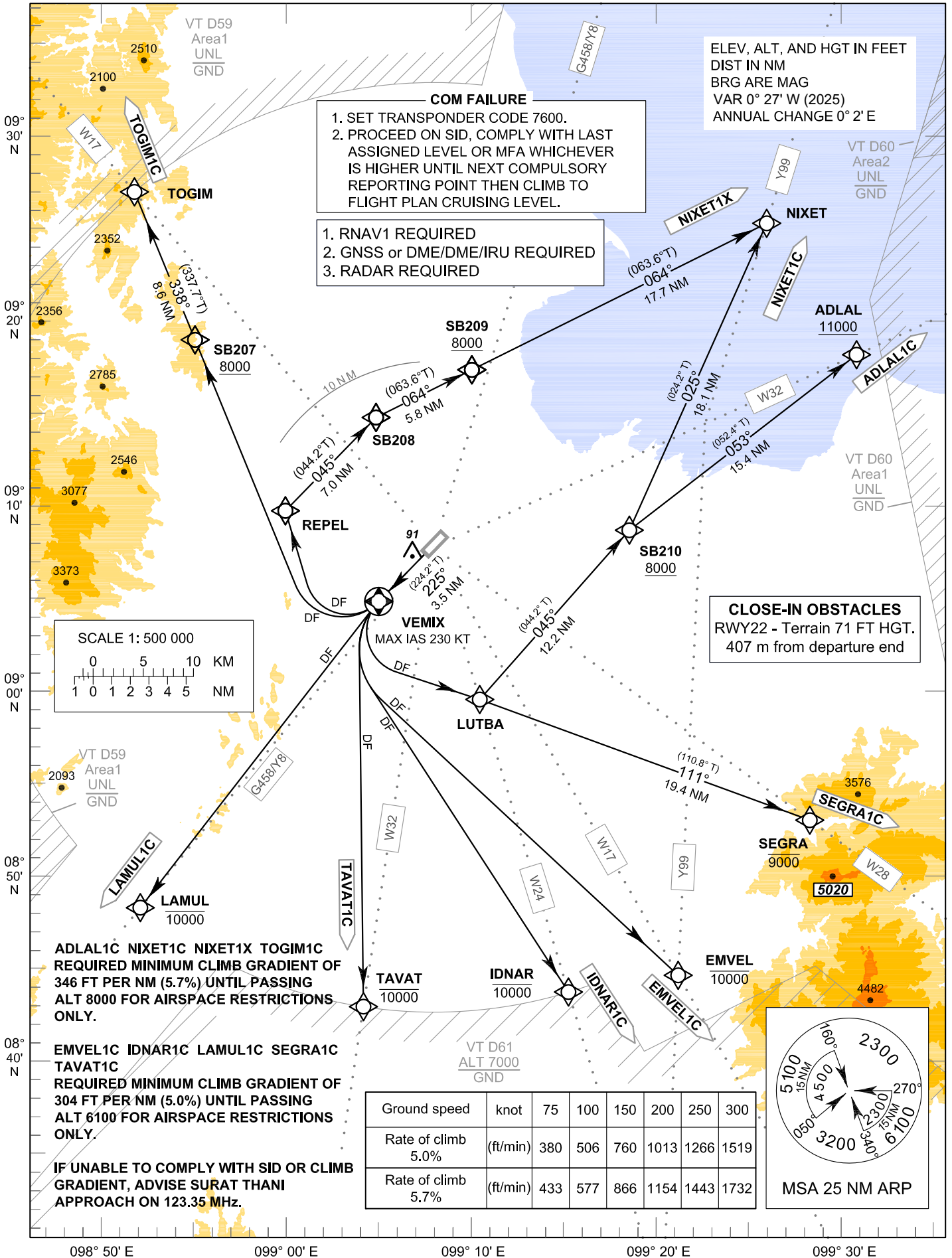
**STANDARD DEPARTURE CHART-
INSTRUMENT (SID) - ICAO**

TRANSITION ALTITUDE
11000 FT

APP : 123.35 , 240.0
TWR : 122.7 , 274.5
GND : 121.9 , 275.8
ATIS : 125.95

**SURAT THANI / Surat Thani (VTSB)
RNAV RWY22**

ADLAL1C EMVEL1C IDNAR1C LAMUL1C
NIXET1C NIXET1X SEGRA1C TAVAT1C TOGIM1C



CHANGE: MAG VAR.