

STANDARD DEPARTURE CHART - INSTRUMENT (SID) - ICAO

**SURAT THANI / Surat Thani (VTSB)
RNAV RWY04**

TRANSITION ALTITUDE
11000 FT

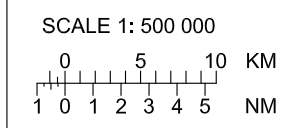
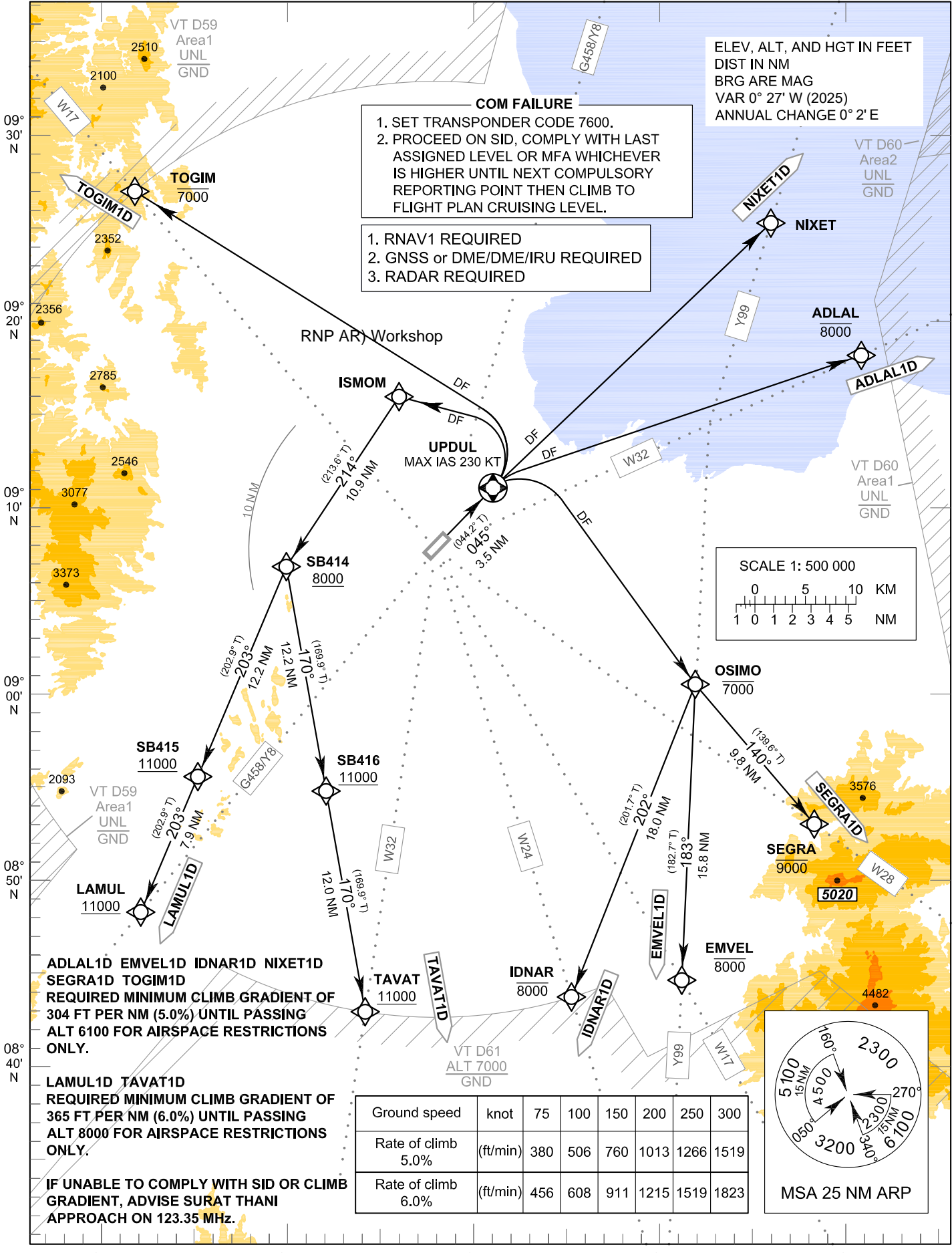
APP : 123.35 , 240.0
TWR : 122.7 , 274.5
GND : 121.9 , 275.8
ATIS : 125.95

ADLAL1D EMVEL1D IDNAR1D LAMUL1D
NIXET1D SEGRA1D TAVAT1D TOGIM1D

ELEV, ALT, AND HGT IN FEET
DIST IN NM
BRG ARE MAG
VAR 0° 27' W (2025)
ANNUAL CHANGE 0° 2' E

COM FAILURE
1. SET TRANSPONDER CODE 7600.
2. PROCEED ON SID, COMPLY WITH LAST ASSIGNED LEVEL OR MFA WHICHEVER IS HIGHER UNTIL NEXT COMPULSORY REPORTING POINT THEN CLIMB TO FLIGHT PLAN CRUISING LEVEL.

1. RNAV1 REQUIRED
2. GNSS or DME/DME/IRU REQUIRED
3. RADAR REQUIRED

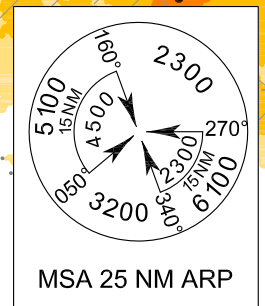


ADLAL1D EMVEL1D IDNAR1D NIXET1D
SEGRA1D TOGIM1D
REQUIRED MINIMUM CLIMB GRADIENT OF
304 FT PER NM (5.0%) UNTIL PASSING
ALT 6100 FOR AIRSPACE RESTRICTIONS
ONLY.

LAMUL1D TAVAT1D
REQUIRED MINIMUM CLIMB GRADIENT OF
365 FT PER NM (6.0%) UNTIL PASSING
ALT 8000 FOR AIRSPACE RESTRICTIONS
ONLY.

IF UNABLE TO COMPLY WITH SID OR CLIMB
GRADIENT, ADVISE SURAT THANI
APPROACH ON 123.35 MHz.

Ground speed	knot	75	100	150	200	250	300
Rate of climb 5.0%	(ft/min)	380	506	760	1013	1266	1519
Rate of climb 6.0%	(ft/min)	456	608	911	1215	1519	1823



CHANGE: MAG VAR.