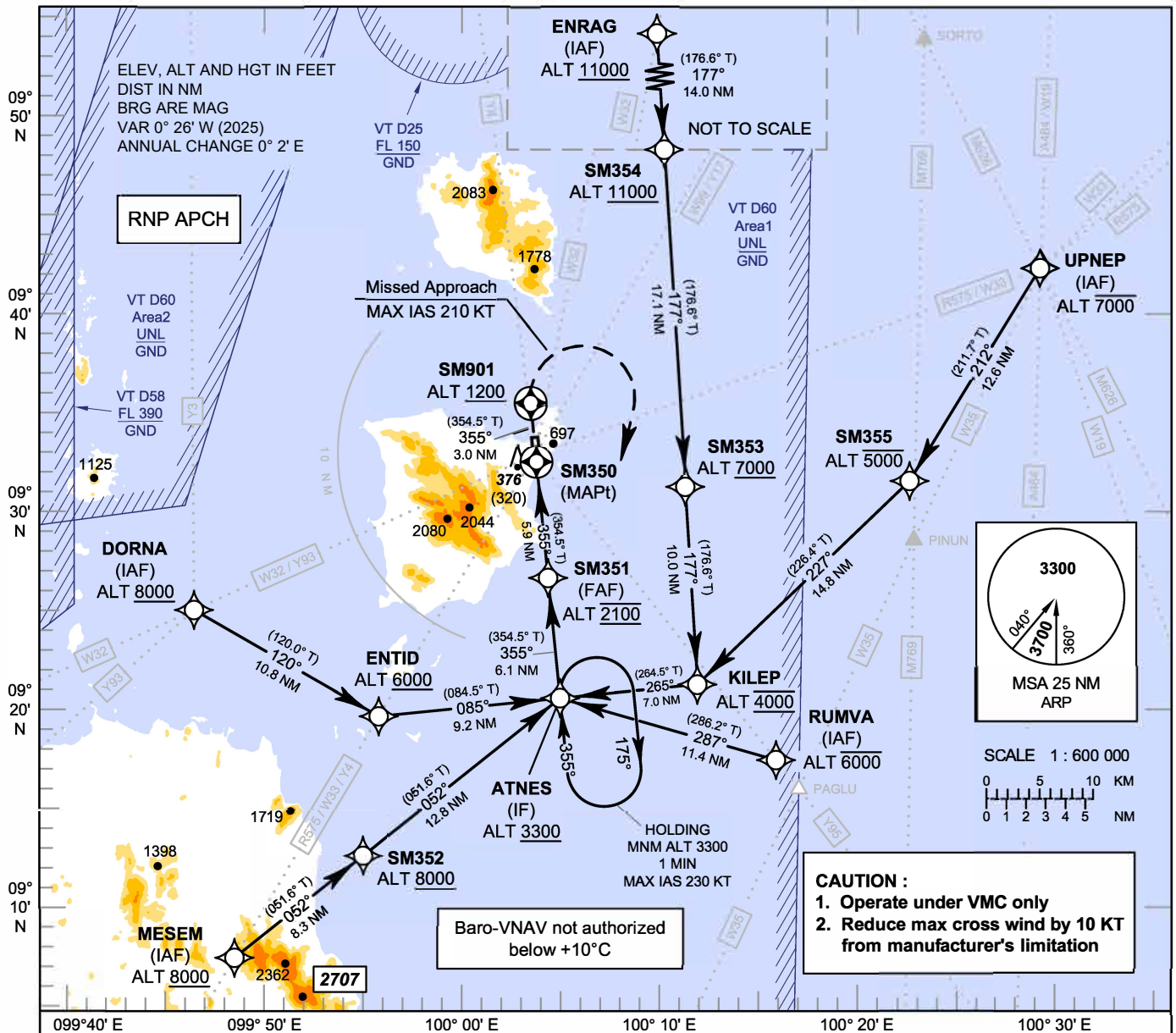


**INSTRUMENT  
APPROACH  
CHART - ICAO**

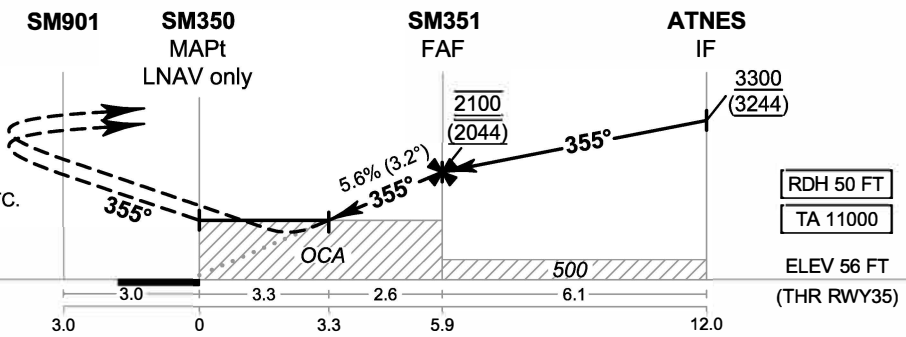
**AERODROME ELEV 64 FT  
HEIGHTS RELATED TO  
THR RWY35 - ELEV 56 FT**

APP : 129.6  
TWR : 118.9  
GND : 121.9  
ATIS : 128.6

**SURAT THANI / Samui (VTSM)  
RNP RWY35  
CAT C**



**MISSED APPROACH :**  
No turn before MAPt.  
Speed restricted to **MAX IAS 210 KT** until after turn.  
Climb on track 355° to SM901, then turn right direct to ATNES at minimum 3300 FT and hold or as directed by ATC.



CHANGE: MAG VAR.

OCA/H	C	NM to NEXT WPT	3.3 NM	4 NM	5 NM	FAF		
LNAV/VNAV	1120 (1064)	Altitude (Height)	1220 (1164)	1470 (1414)	1810 (1754)	2100 (2044)		
LNAV	1220 (1164)	Ground Speed	knot 70	90	100	120	140	160
Circling* (OCH AAL)	1400 (1336)	Rate of Descent FAF - MAPt 5.6%	ft/min 397	510	567	681	794	907

\* FOR CIRCLING RESTRICTIONS SEE VERSO.