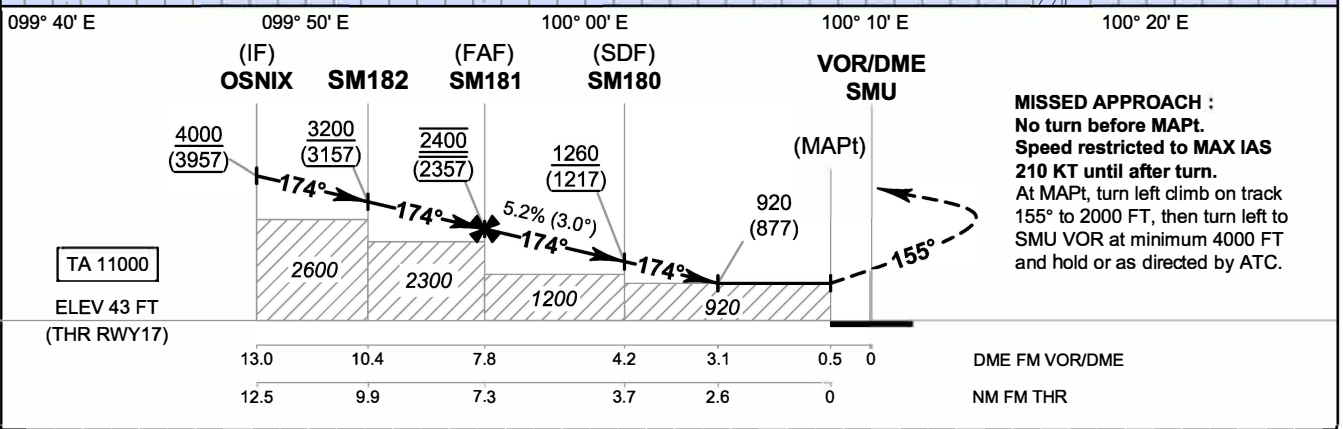
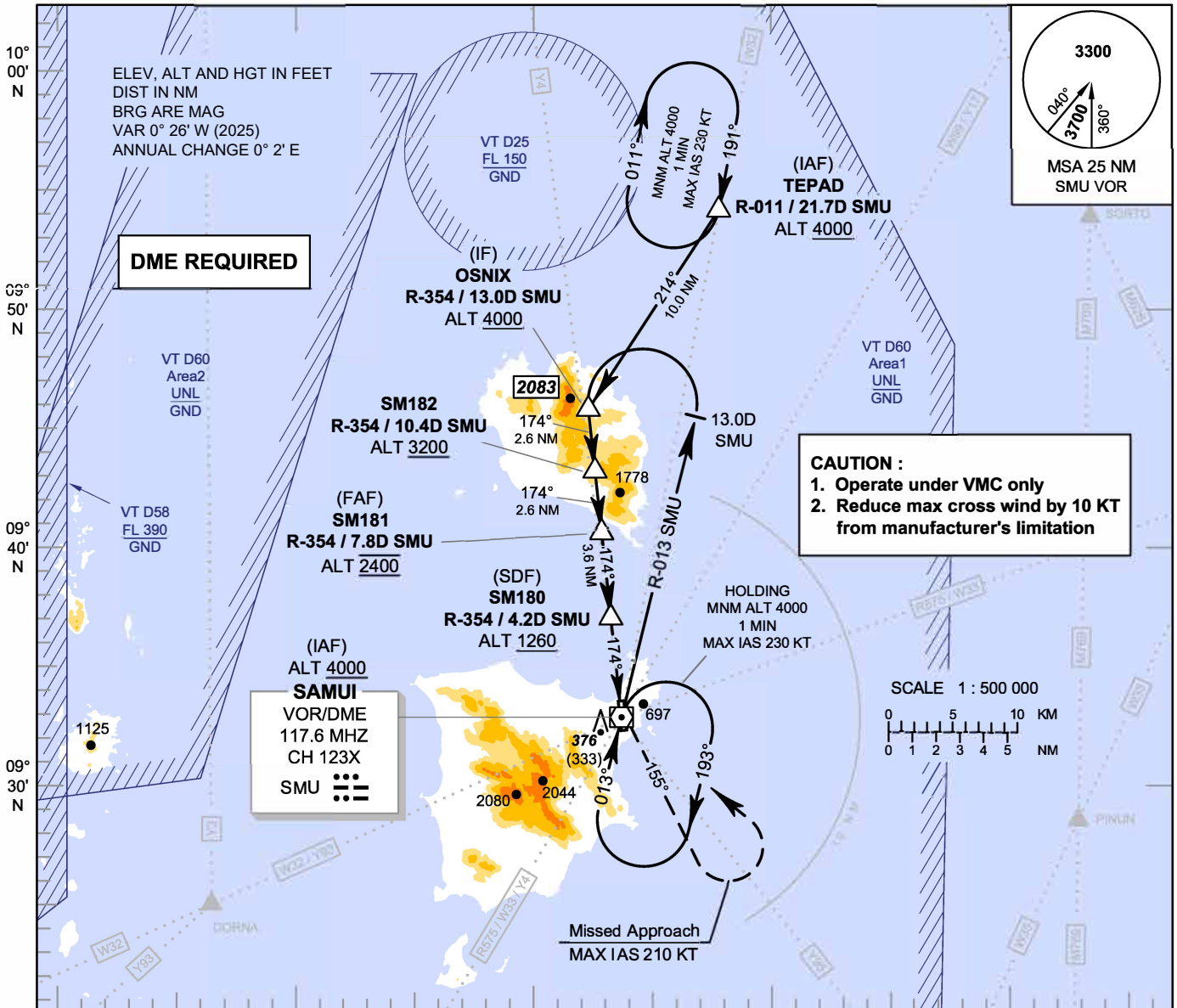


**INSTRUMENT
APPROACH
CHART - ICAO**

**AERODROME ELEV 64 FT
HEIGHTS RELATED TO
THR RWY17 - ELEV 43 FT**

APP : 129.6
TWR : 118.9
GND : 121.9
ATIS : 128.6

**SURAT THANI / Samui (VTSM)
VOR RWY17
CAT C**



MISSED APPROACH :
No turn before MAPt.
Speed restricted to MAX IAS 210 KT until after turn.
At MAPt, turn left climb on track 155° to 2000 FT, then turn left to SMU VOR at minimum 4000 FT and hold or as directed by ATC.

OCA/H	C	Distance (SMU)	FAF	7 D	6 D	5 D	4 D	3.1 D
Straight - in Approach	920 (877)	Altitude (Height)	2400 (2357)	2145 (2102)	1830 (1787)	1515 (1472)	1200 (1157)	920 (877)
Circling* (OCH AAL)	1400 (1336)	Ground Speed	knot	70	90	100	120	140
		Rate of Descent	ft/min	369	474	527	632	737
								843

CHANGE: MAG VAR.

* FOR CIRCLING RESTRICTIONS SEE VERSO.