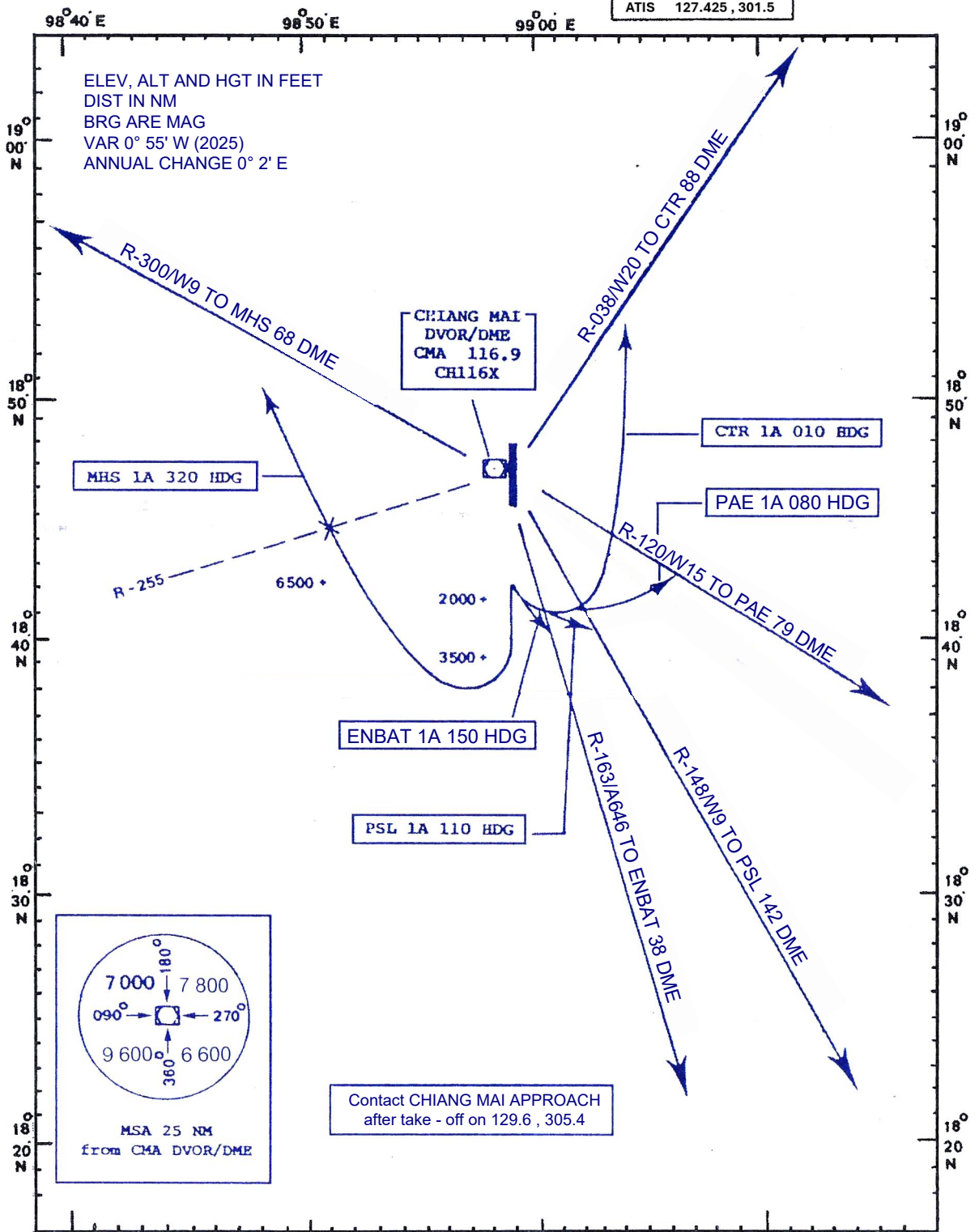


STANDARD DEPARTURE CHART
INSTRUMENT (SID) - ICAO

TRANSITION ALTITUDE
11 000 ft

TWR	118.1, 236.6
APP	129.6, 305.4
GND	121.9, 275.8
ATIS	127.425, 301.5

CHIANG MAI
RWY 18



CHANGE: MAG VAR.