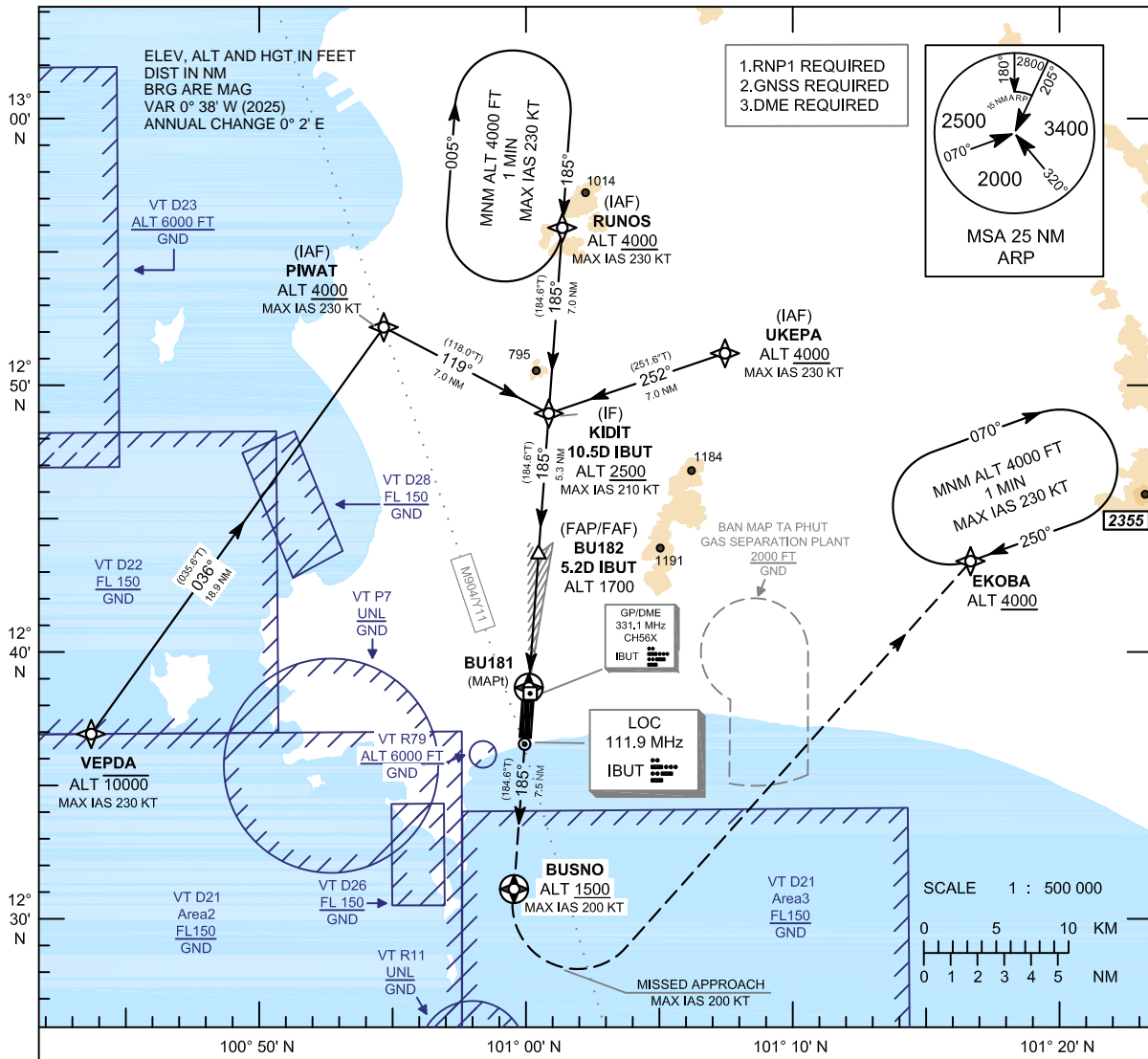


**INSTRUMENT  
APPROACH  
CHART - ICAO**

**AERODROME ELEV 59 FT**  
HEIGHTS RELATED TO  
THR RWY18 - ELEV 59 FT

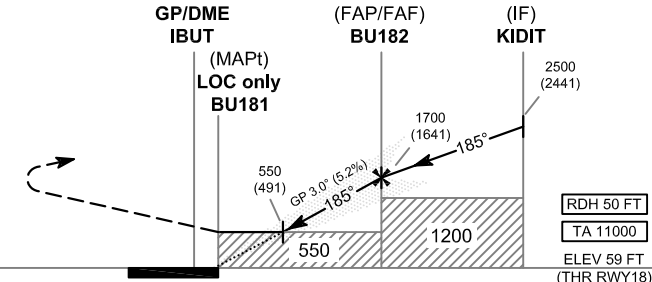
APP : 119.7 , 134.5  
238.3 , 273.3  
TWR : 118.3 , 227.0  
GND : 121.9 , 275.8  
ATIS : 127.2

**RAYONG / U-TAPAO RAYONG  
PATTAYA INTL (VTBU)**  
ILS or LOC z RWY18



**CAUTION : Aircraft shall avoid entering VT R11**

**MISSED APPROACH :**  
No turn before MAPt (for LOC only).  
Speed restricted to  
**MAX IAS 200 KT until after turn.**  
climb on track 185° to BUSNO at or above  
1500 FT, After BUSNO turn left direct to  
EKOBA at ALT 4000FT or above and hold  
or as directed by ATC.



DME FM GP/DME	0	0.2	1.6	5.2	10.5
NM FM THR	0	0.2	1.4	5.0	10.3

CHANGE: MAG VAR.

OCA/H		A	B	C	D	GS OUT	Distance (IBUT)	1.6 D	2 D	3 D	4 D	FAF	
Straight-in Approach	CAT I	300 (241)				Altitude (Height)	1.6 D	550 (491)	680 (621)	995 (936)	1310 (1251)	1700 (1641)	
		550 (491)					Ground speed	knot	70	90	100	120	140
LOC only		550 (491)				Rate of descent (5.2%)	ft/min	369	474	527	632	737	843
Circling (OCH AAL)		1200 (1141)	1450 (1391)										