

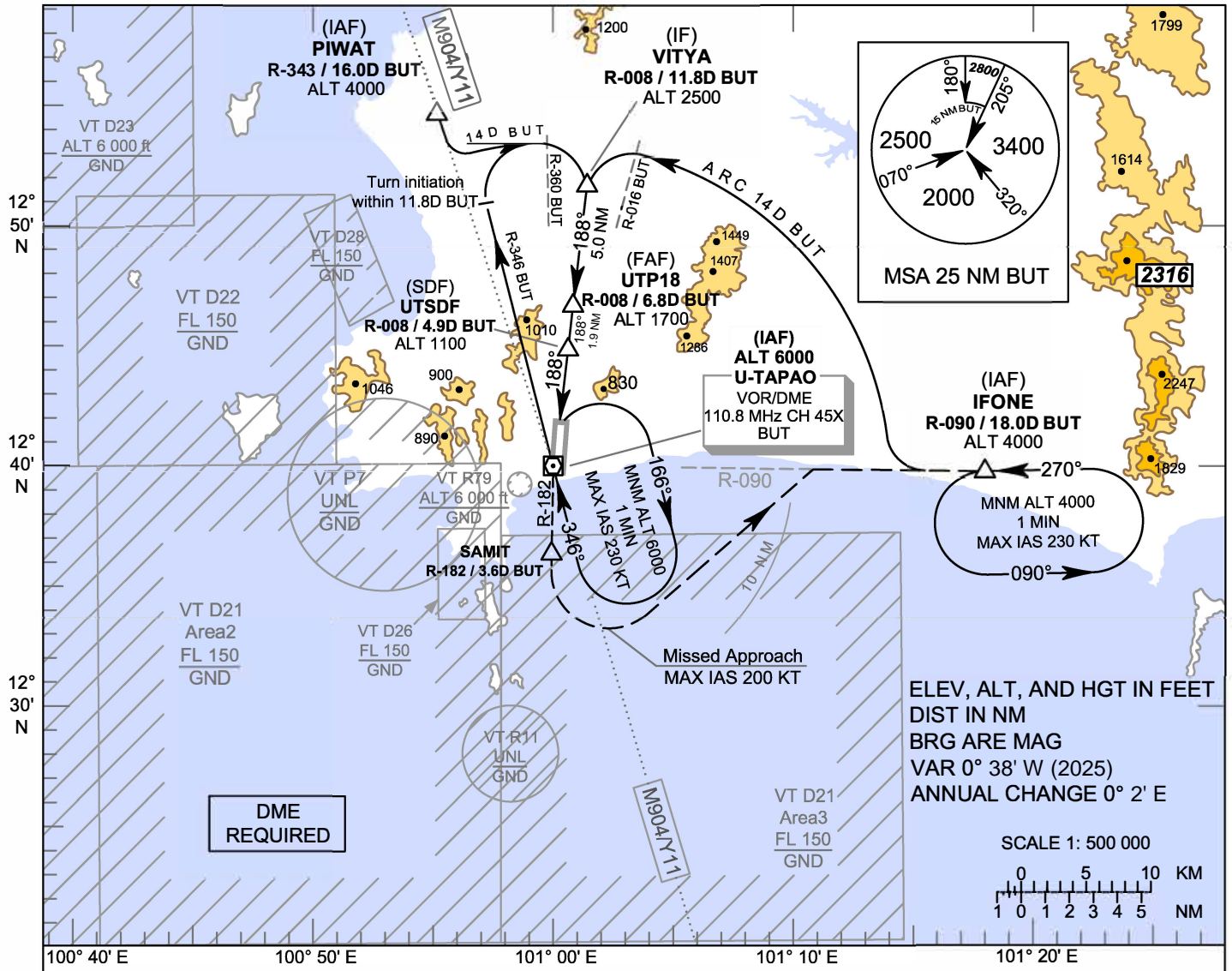
**INSTRUMENT
APPROACH
CHART - ICAO**

**AERODROME ELEV 59 FT
HEIGHTS RELATED TO
AERODROME ELEV**

APP : 119.7 , 134.5
238.3 , 273.3
TWR : 118.3 , 227.0
GND : 121.9 , 275.8
ATIS : 127.2

**RAYONG / U-TAPAO RAYONG
PATTAYA INTL (VTBU)**

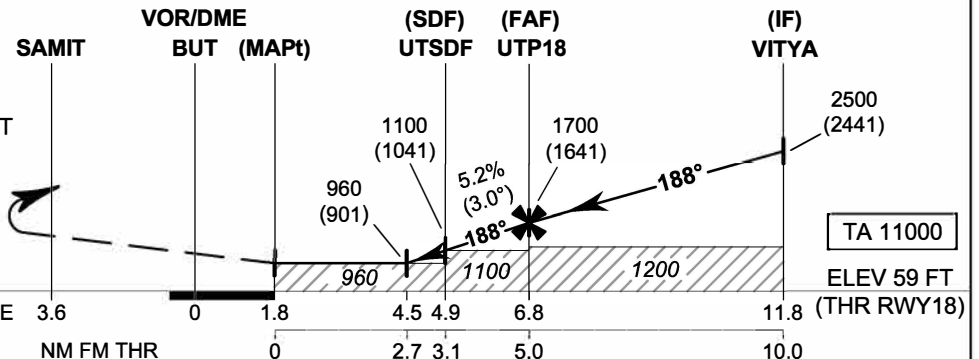
VOR RWY18



CAUTION: Aircraft shall avoid entering VT R11

MISSED APPROACH:
No turn before MAPt.
Speed restricted to
MAX IAS 200 KT until after turn.

Climb to intercept outbound R-182 BUT
VOR to SAMIT. After SAMIT and ALT
passing 1500 FT, turn left to intercept
outbound R-090 BUT VOR, then
proceed to IFONE and hold
or as directed by ATC



OCA/H	A	B	C	D	Distance (BUT)	4.5 D	5 D	6 D	FAF		
Straight-in Approach	960 (901)				Altitude (Height)	960 (901)	1120 (1061)	1435 (1376)	1700 (1641)		
					Ground speed	knot	70	90	100	120	140
Circling (OCH AAL)	1200 (1141)		1450 (1391)		Rate of descent (ft/min)	369	474	527	632	737	843

CHANGE: MAG VAR. (IAF) PIWAT RADIAL FM VOR.