

**STANDARD DEPARTURE CHART-  
INSTRUMENT (SID) - ICAO**

TRANSITION ALTITUDE  
11000 FT

**SPEED RESTRICTION**  
MAX IAS 250 KT AT OR  
BELOW ALT 10000 FT  
UNLESS OTHERWISE  
AUTHORIZED BY ATC.

APP : 119.7 , 134.5  
238.3 , 273.3  
TWR : 118.3 , 227.0  
GND : 121.9 , 275.8  
ATIS : 127.2

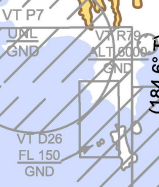
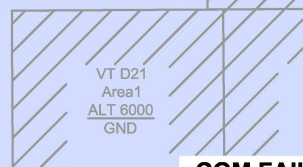
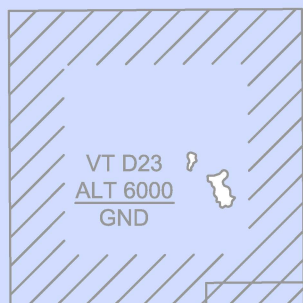
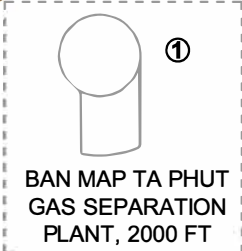
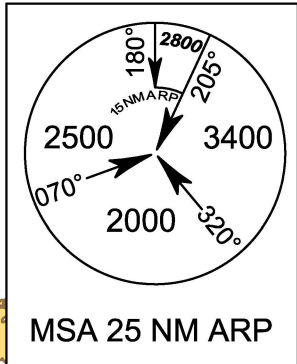
**RAYONG / U-TAPAO RAYONG  
PATTAYA Intl (VTBU)  
RNAV RWY18**

BKK1A

ELEV, ALT AND HGT IN FEET  
DIST IN NM  
BRG ARE MAG  
VAR 0° 38' W (2025)  
ANNUAL CHANGE 0° 2' E

NO TURN BEFORE DER

**1. RNP1 REQUIRED  
2. GNSS REQUIRED**

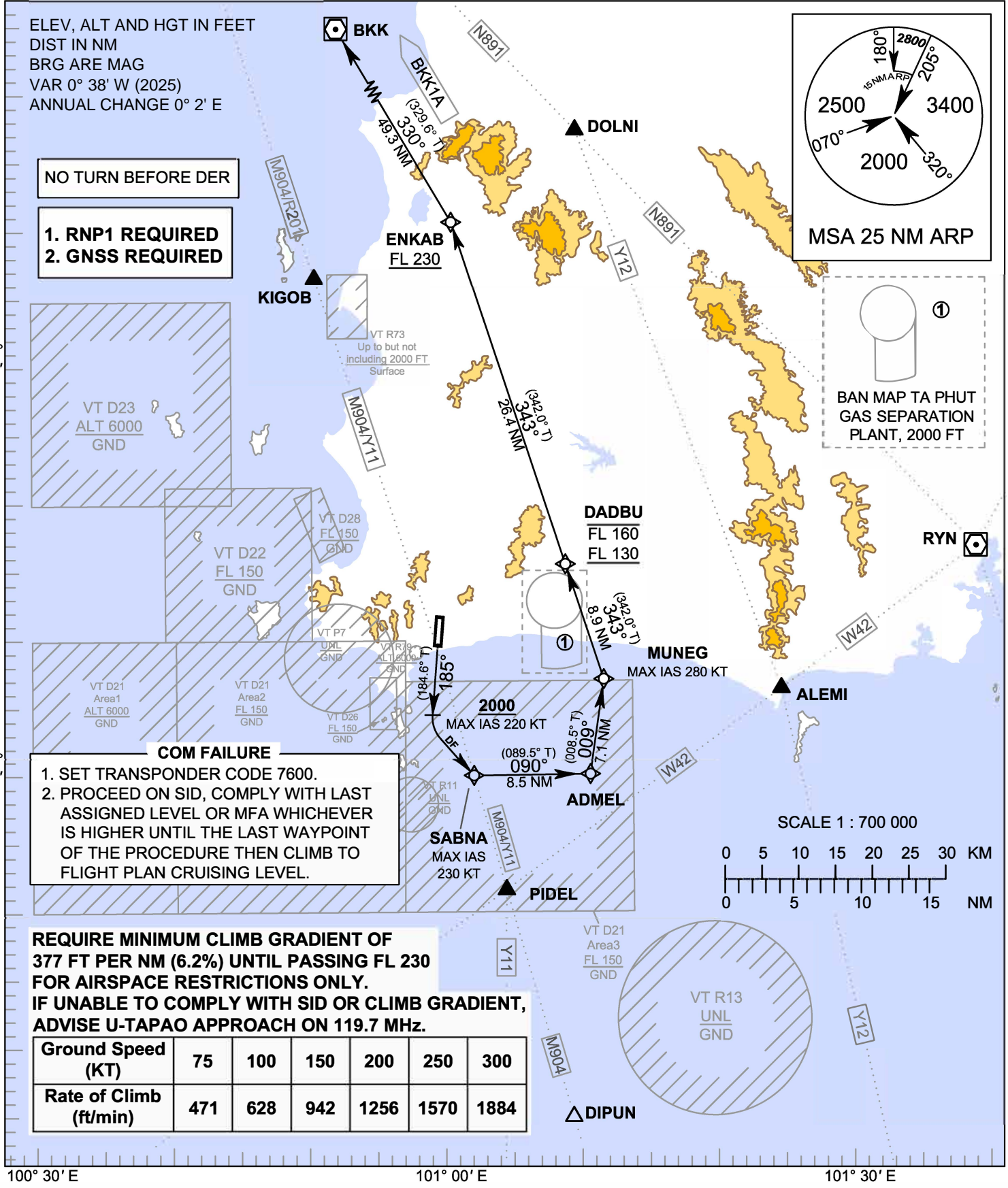
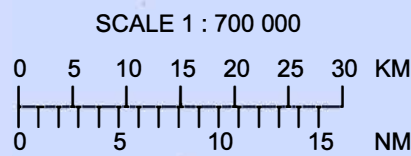


**COM FAILURE**

1. SET TRANSPONDER CODE 7600.
2. PROCEED ON SID, COMPLY WITH LAST ASSIGNED LEVEL OR MFA WHICHEVER IS HIGHER UNTIL THE LAST WAYPOINT OF THE PROCEDURE THEN CLIMB TO FLIGHT PLAN CRUISING LEVEL.

**REQUIRE MINIMUM CLIMB GRADIENT OF  
377 FT PER NM (6.2%) UNTIL PASSING FL 230  
FOR AIRSPACE RESTRICTIONS ONLY.  
IF UNABLE TO COMPLY WITH SID OR CLIMB GRADIENT,  
ADVISE U-TAPAO APPROACH ON 119.7 MHz.**

<b>Ground Speed (KT)</b>	75	100	150	200	250	300
<b>Rate of Climb (ft/min)</b>	471	628	942	1256	1570	1884



CHANGE: MAG VAR. ENKAB TO BKK TRACK.