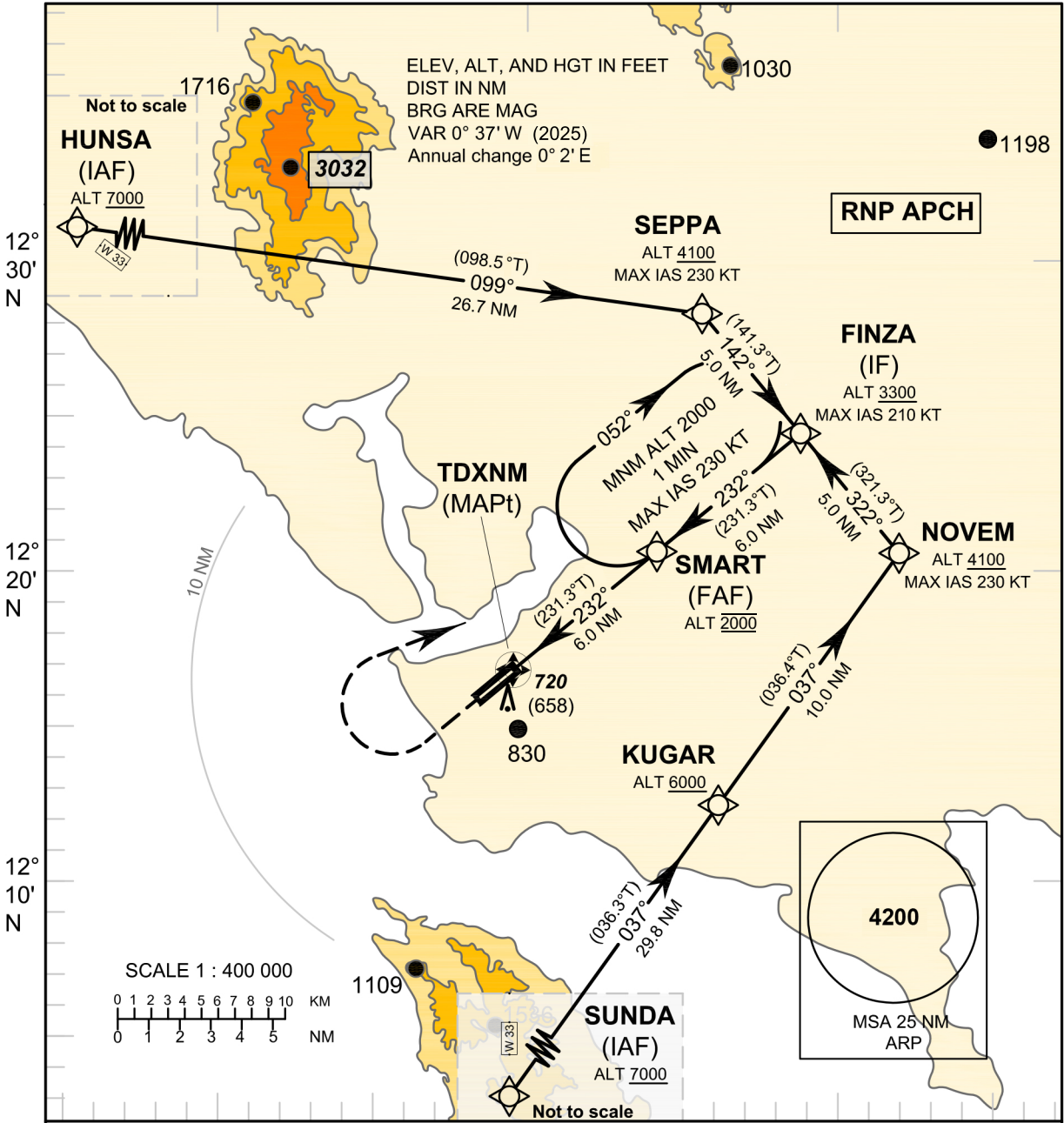


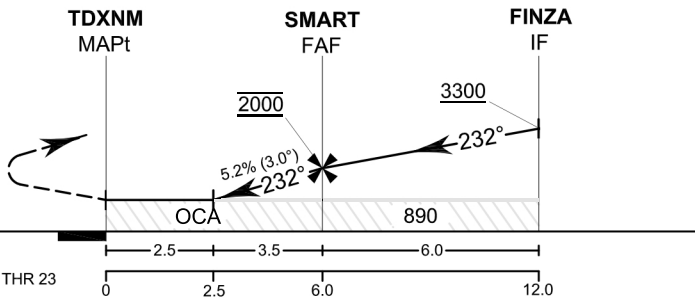
INSTRUMENT AERODROME ELEV 109 FT
APPROACH HEIGHTS RELATED TO
CHART-ICAO THR RWY23 - ELEV 65 FT

APP : 120.25
 TWR : 122.9

TRAT / Trat (VTBO)
 RNP RWY23



Missed Approach :
No turn before MAPt.
 Climb on track 232° to 1200 FT,
 then turn right direct to **FAF**
 at 2000 FT and hold or as
 directed by ATC.



CHANGE : MAG VAR, AD ELEV, THR ELEV.

OCA/H	A	B	C	D	NM to NEXT WPT	2.5 NM	3 NM	4 NM	5 NM	FAF		
LNAV	890 (825)				Altitude (Height)	890 (825)	1060 (995)	1375 (1310)	1690 (1625)	2000 (1935)		
					Ground Speed	knot	70	90	100	120	140	160
Circling (OCH AAL)	1240 (1131)		1330 (1221)		Rate of descent FAF - MAPt 5.2%	(ft/min)	369	474	527	632	737	843