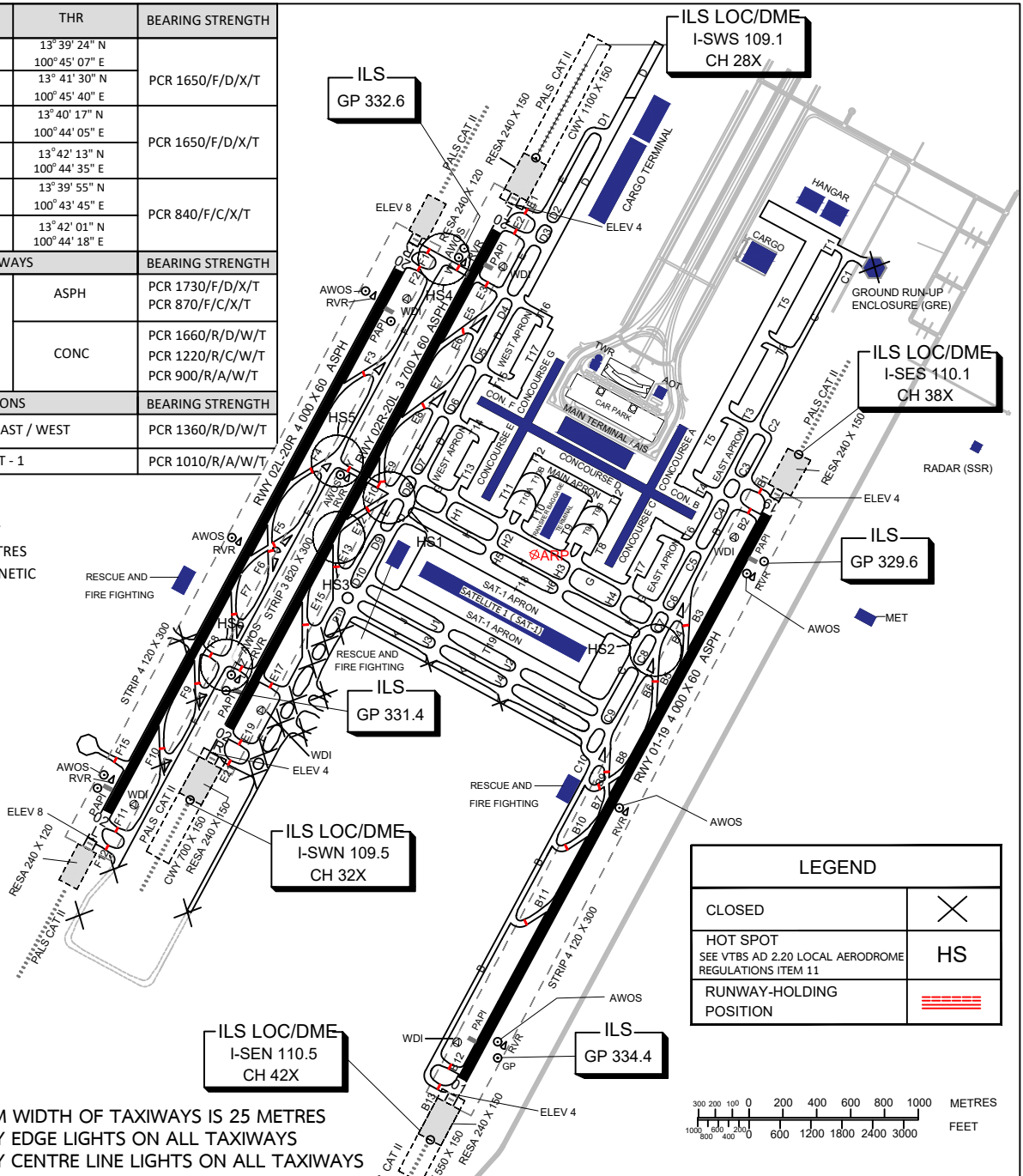


RWY	DIRECTION	THR	BEARING STRENGTH
01	15°	13° 39' 24" N 100° 45' 07" E	PCR 1650/F/D/X/T
19	195°	13° 41' 30" N 100° 45' 40" E	
02R	15°	13° 40' 17" N 100° 44' 05" E	PCR 1650/F/D/X/T
20L	195°	13° 42' 13" N 100° 44' 35" E	PCR 840/F/C/X/T
02L	15°	13° 39' 55" N 100° 43' 45" E	
20R	195°	13° 42' 01" N 100° 44' 18" E	
TAXIWAYS		BEARING STRENGTH	
SURFACE TYPE	ASPH	PCR 1730/F/D/X/T PCR 870/F/C/X/T	
	CONC	PCR 1660/R/D/W/T PCR 1220/R/C/W/T PCR 900/R/A/W/T	
APRONS		BEARING STRENGTH	
MAIN / EAST / WEST		PCR 1360/R/D/W/T	
SAT - 1		PCR 1010/R/A/W/T	

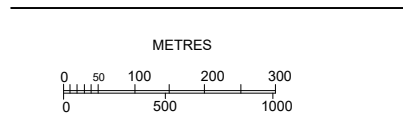
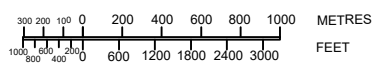
ELEVATIONS IN FEET
DIMENSIONS IN METRES
BEARINGS ARE MAGNETIC



LEGEND	
CLOSED	✕
HOT SPOT SEE VTBS AD 2.20 LOCAL AERODROME REGULATIONS ITEM 11	HS
RUNWAY-HOLDING POSITION	≡≡≡

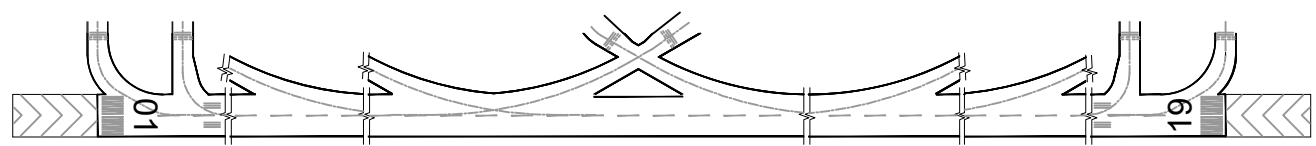
REMARKS :

- MINIMUM WIDTH OF TAXIWAYS IS 25 METRES
- TAXIWAY EDGE LIGHTS ON ALL TAXIWAYS
- TAXIWAY CENTRE LINE LIGHTS ON ALL TAXIWAYS

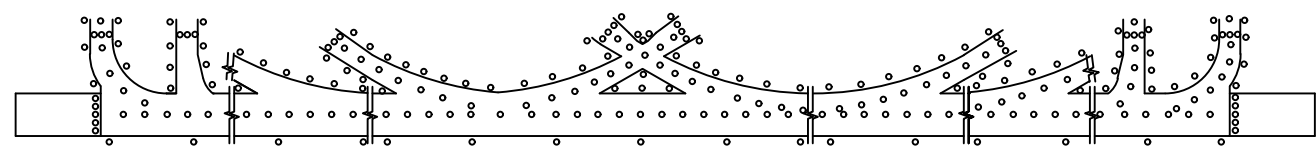


MARKING AIDS RWY 01/19 AND EXIT TWY

MARKING AND LIGHTING AIDS
OF ALL RUNWAYS SIMILAR TO RWY 01/19



LIGHTING AIDS RWY 01/19 AND EXIT TWY



CHANGE : TOWER FREQUENCY