

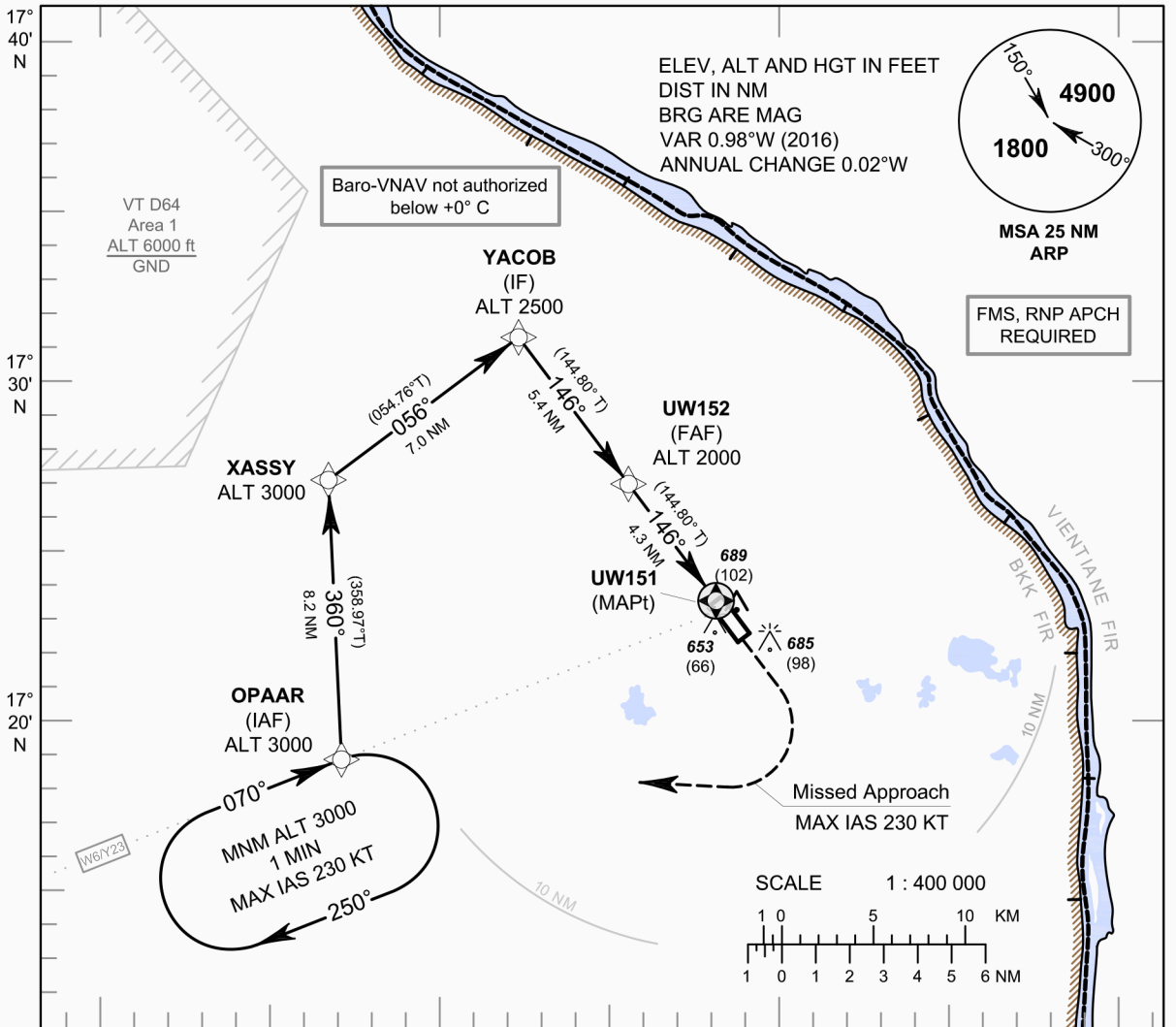
**INSTRUMENT  
APPROACH  
CHART - ICAO**

**AERODROME ELEV 587 FT**  
HEIGHTS RELATED TO  
AERODROME ELEV

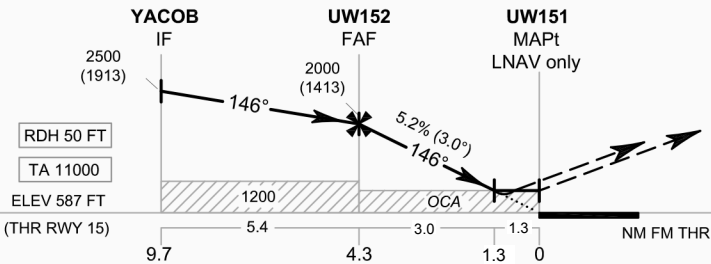
APP : 123.35 , 284.0  
TWR : 122.15 , 236.6  
GND : 121.9  
ATIS : 128.85

**NAKHON PHANOM / Nakhon Phanom  
(VTUW)**

**RNP RWY15**



104° 20' E      104° 30' E      104° 40' E      104° 50' E



**MISSED APPROACH :**  
**No turn before MAPt.**  
**Speed restricted to**  
**MAX IAS 230 KT** until after turn.  
Climb on track 146° to 2400 FT  
then turn right direct to OPAAR at 3000 FT  
and hold or as directed by ATC.

CHANGE: FREQUENCY.

OCA/H	A	B	C	D	NM to NEXT WPT	FAF	4 NM	3 NM	2 NM	1.3 NM
RNAV/VNAV	850 (263)				Altitude (Height)	2000 (1413)	1900 (1313)	1585 (998)	1270 (683)	1050 (463)
RNAV	1050 (463)				Ground speed	knot	70	90	100	120 140 160
Circling (OCH AAL)	1100 (513)		1300 (713)		Rate of descent (5.2%)	(ft/min)	369	474	527	632 737 843