

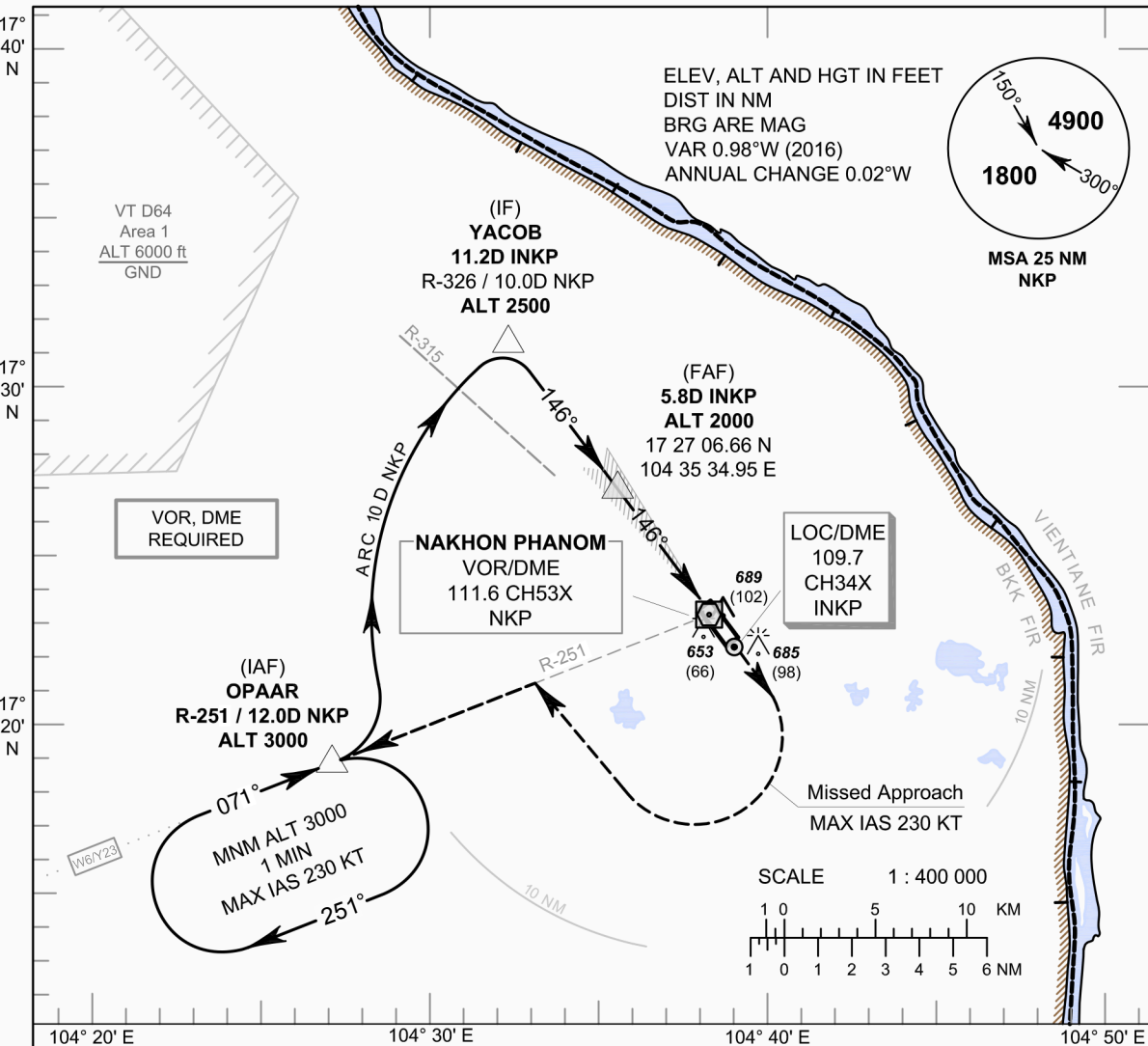
INSTRUMENT APPROACH CHART - ICAO

AERODROME ELEV 587 FT
 HEIGHTS RELATED TO
 THR RWY15 - ELEV 587 FT

APP : 123.35 , 284.0
 TWR : 122.15 , 236.6
 GND : 121.9
 ATIS : 128.85

NAKHON PHANOM / Nakhon Phanom (VTUW)

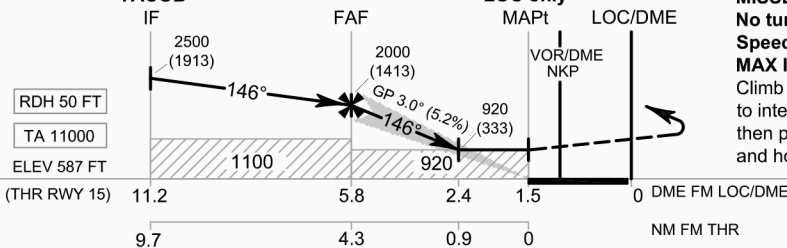
ILS or LOC RWY15



YACOB

LOC only

MISSED APPROACH :



No turn before MAPt.
Speed restricted to MAX IAS 230 KT until after turn.
 Climb straight ahead to 2400 FT then turn right to intercept outbound R-251 NKP VOR then proceed to OPAAR at 3000 FT and hold or as directed by ATC.

OCA/H		A	B	C	D	GS out	Distance to INKP	FAF	5 D	4 D	3 D	2.4 D		
Straight - in Approach	CAT I	800 (213)						Altitude (Height)	2000 (1413)	1740 (1153)	1425 (838)	1110 (523)	920 (333)	
LOC only		920 (333)					Ground speed	knot	70	90	100	120	140	160
Circling (OCH AAL)		1100 (513)		1300 (713)			Rate of descent (3.0°)	(ft/min)	372	478	531	637	743	849

CHANGE: FREQUENCY.