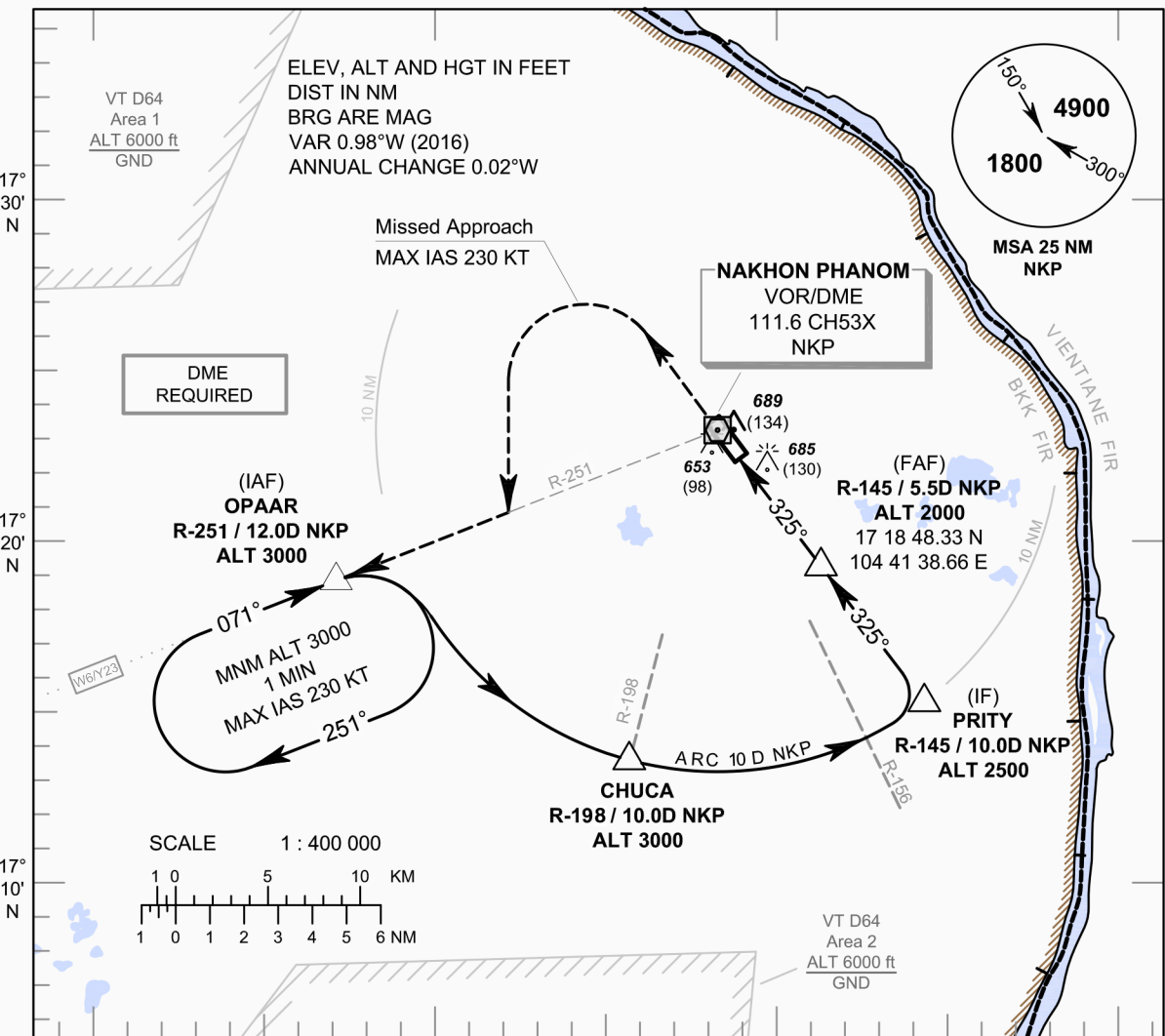


INSTRUMENT APPROACH CHART - ICAO

AERODROME ELEV 587 FT
HEIGHTS RELATED TO THR RWY33 - ELEV 555 FT

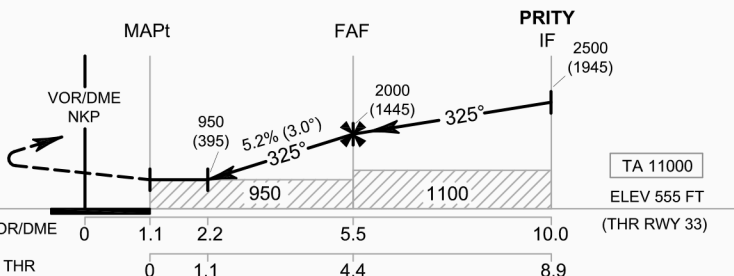
APP : 123.35 , 284.0
 TWR : 122.15 , 236.6
 GND : 121.9
 ATIS : 128.85

NAKHON PHANOM / Nakhon Phanom (VTUW)
VOR RWY33



MISSED APPROACH :

No turn before MAPt.
Speed restricted to MAX IAS 230 KT until after turn.
 Climb straight ahead to 2400 FT then turn left to intercept outbound R-251 NKP VOR then proceed to OPAAR at 3000 FT and hold or as directed by ATC.



OCA/H	A	B	C	D	Distance to NKP	2.2 D	3 D	4 D	5 D	FAF
Straight - in Approach	950 (395)				Altitude (Height)	950 (395)	1205 (650)	1520 (965)	1835 (1280)	2000 (1445)
					Ground speed	knot	70	90	100	120 140 160
Circling (OCH AAL)	1100 (513)		1300 (713)		Rate of descent (5.2%)	(ft/min)	369	474	527	632 737 843

CHANGE: FREQUENCY.