

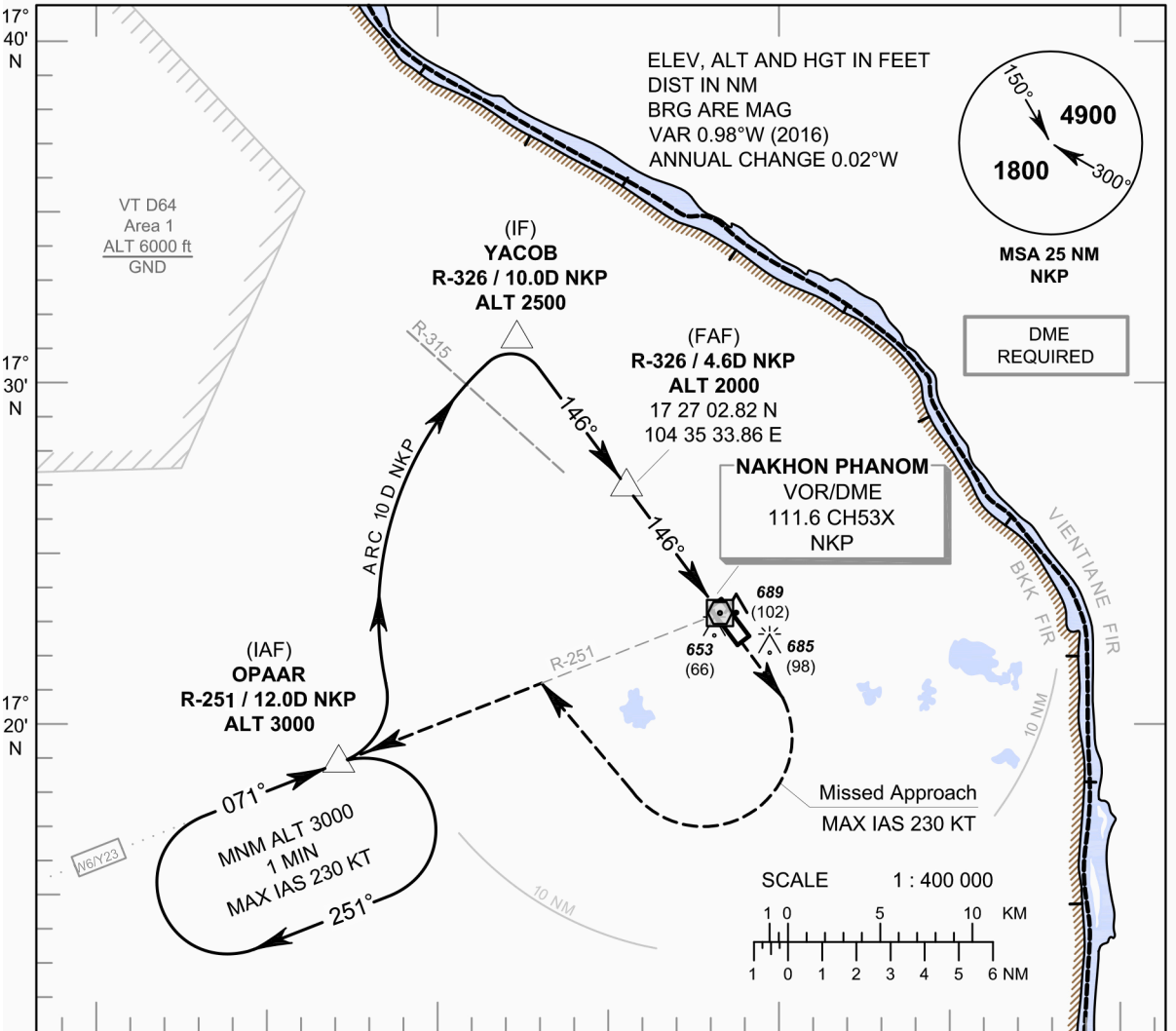
**INSTRUMENT
APPROACH
CHART - ICAO**

AERODROME ELEV 587 FT
HEIGHTS RELATED TO
AERODROME ELEV

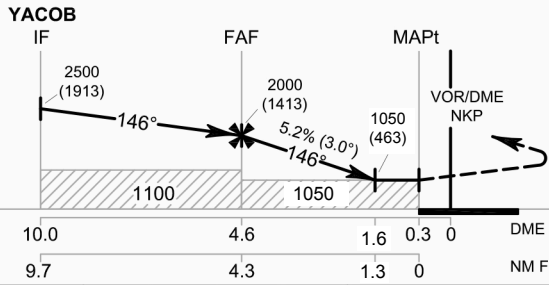
APP : 123.35 , 284.0
TWR : 122.15 , 236.6
GND : 121.9
ATIS : 128.85

**NAKHON PHANOM / Nakhon Phanom
(VTUW)**

VOR RWY15



104° 20' E 104° 30' E 104° 40' E 104° 50' E



MISSED APPROACH :
No turn before MAPt.
Speed restricted to
MAX IAS 230 KT until after turn.
Climb straight ahead to 2400 FT then turn right to intercept outbound R-251 NKP VOR then proceed to OPAAR at 3000 FT and hold or as directed by ATC.

(THR RWY 15)	10.0	4.6	1.6	0.3	0	DME FM VOR/DME
	9.7	4.3	1.3	0		NM FM THR

OCA/H	A	B	C	D	Distance to NKP	FAF	4 D	3 D	2 D	1.6 D		
Straight - in Approach	1050 (463)				Altitude (Height)	2000 (1413)	1805 (1218)	1490 (903)	1175 (588)	1050 (463)		
					Ground speed	knot	70	90	100	120	140	160
Circling (OCH AAL)	1100 (513)	1300 (713)			Rate of descent (5.2%)	(ft/min)	369	474	527	632	737	843

CHANGE: FREQUENCY.