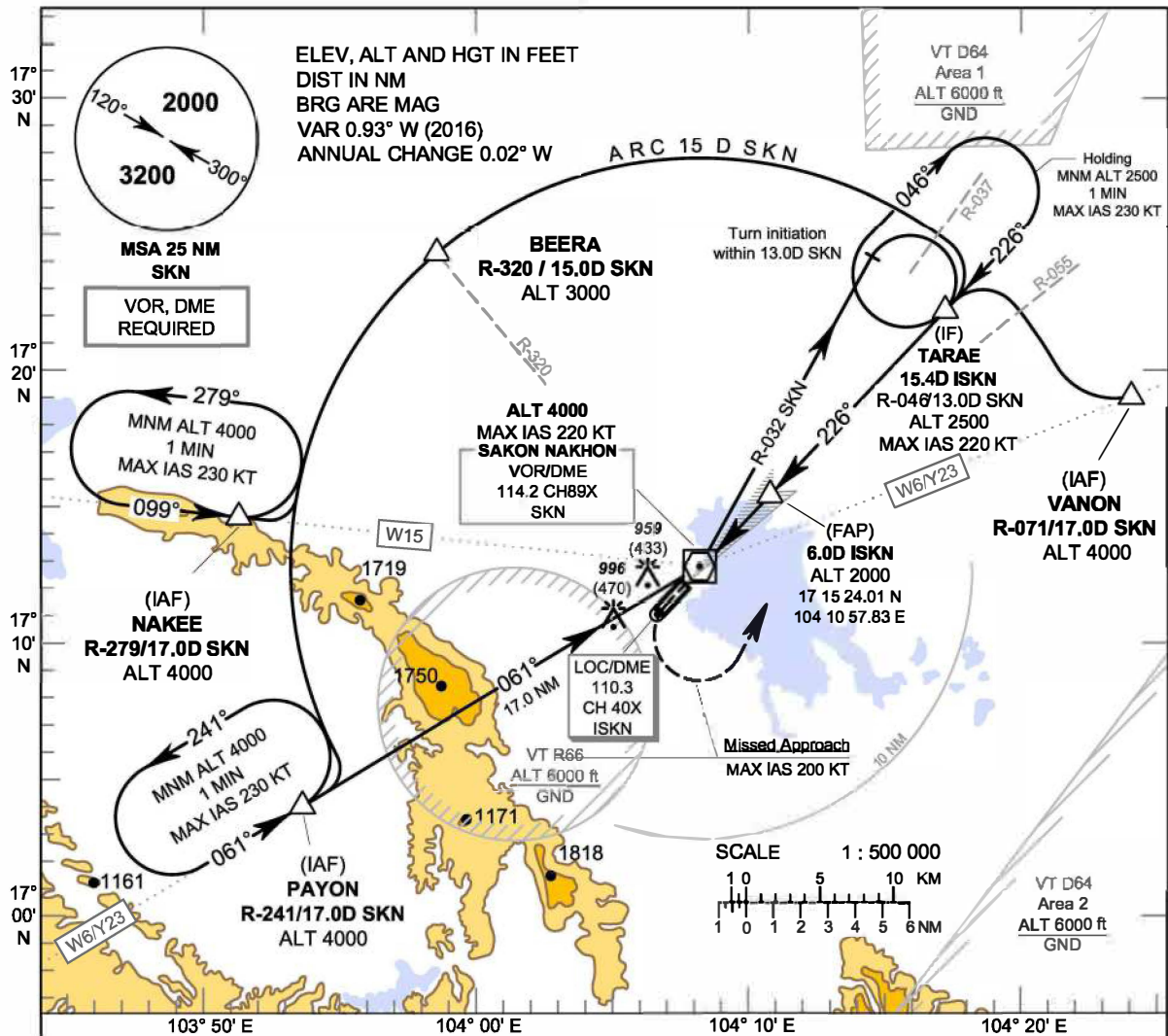


INSTRUMENT APPROACH CHART - ICAO
AERODROME ELEV 529 FT
HEIGHTS RELATED TO THR RWY23 - ELEV 526 FT

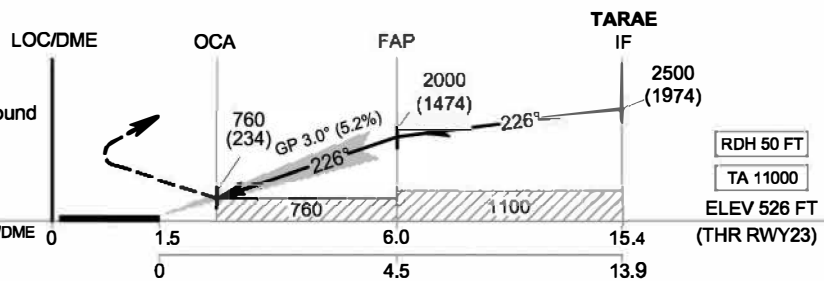
APP : 123.35 , 284.0
 TWR : 119.65 , 236.6
 GND : 121.9
 ATIS : 128.25

SAKON NAKHON / Sakon Nakhon (VTUI)
ILS RWY23



MISSED APPROACH :

Speed restricted to MAX IAS 200 KT until after turn.
 At OCA, turn left to intercept outbound R-046 SKN VOR, then proceed to TARAIE at 2500 FT, and hold as directed by ATC.



CHANGE: FREQUENCY.

OCA/H		A	B	C	D	Ground speed	knot	70	90	100	120	140	160
Straight - in Approach	CAT I	760 (234)											
	Circling (OCH AAL)		1500 (971)										