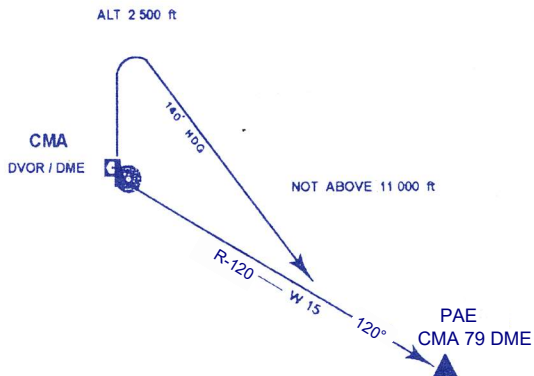


STANDARD INSTRUMENT DEPARTURE RUNWAY 36

PHRAE ONE BRAVO (PAE 1B)

Departure gradient 3.3% take off, climb runway heading until 2 500 FT, or above, then turn right heading 140° to intercept and proceed on CMA R-120 not above 11 000 FT. Expect radar control. Contact Chiang Mai Approach on 129.6, 305.4 MHZ after take-off.



CHIANG RAI ONE BRAVO (CTR 1B)

Departure gradient 3.3% take off, climb runway heading until 2 500 FT, or above, then turn right heading 060° to intercept and proceed on CMA R-038 not above 11 000 FT. Expect radar control. Contact Chiang Mai Approach on 129.6, 305.4 MHZ after take-off.

