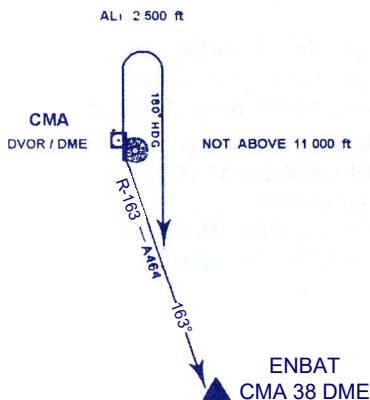


STANDARD INSTRUMENT DEPARTURE RUNWAY 36

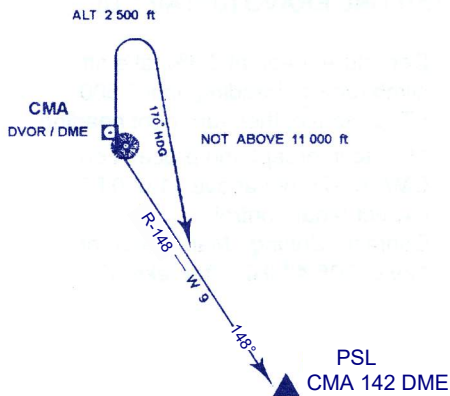
**ENBAT ONE BRAVO (ENBAT 1B)**

Departure gradient 3.3% take off, climb runway heading until 2 500 FT, or above, then turn right heading 180° to intercept and proceed on CMA R-163 not above 11 000 FT. Expect radar control. Contact Chiang Mai Approach on 129.6, 305.4 MHZ after take-off.



**PHITSANULOK ONE BRAVO (PSL 1B)**

Departure gradient 3.3% take off, climb runway heading until 2 500 FT, or above, then turn right heading 170° to intercept and proceed on CMA R-148 not above 11 000 FT. Expect radar control. Contact Chiang Mai Approach on 129.6, 305.4 MHZ after take-off.



**MAE HONG SON ONE BRAVO (MHS 1B)**

Departure gradient 3.3% take off, climb runway heading until 2 500 FT, or above, then turn right heading 180° to cross CMA R-130 not below 6 500 FT turn right heading 310° to intercept and proceed on CMA R-300 not above 11 000 FT. Expect radar control. Contact Chiang Mai Approach on 129.6, 305.4 MHZ after take-off.

