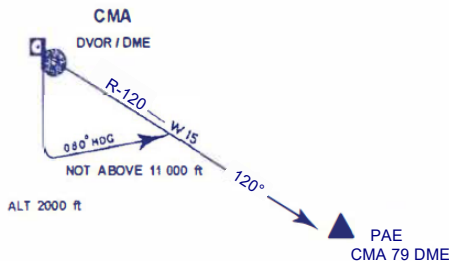


STANDARD INSTRUMENT DEPARTURE RUNWAY 18

**PHRAE ONE ALFA (PAE 1A)**

Take off, climb runway heading until 2 000 FT, or above, then turn left heading 080° to intercept and proceed on CMA R-120 not above 11 000 FT.  
 Expect radar control.  
 Contact Chiang Mai Approach on 129.6, 305.4 MHZ after take-off.



**CHIANG RAI ONE ALFA (CTR 1A)**

Take off, climb runway heading until 2 000 FT, or above, then turn left heading 010° to intercept and proceed on CMA R-038 not above 11 000 FT.  
 Expect radar control.  
 Contact Chiang Mai Approach on 129.6, 305.4 MHZ after take-off.

