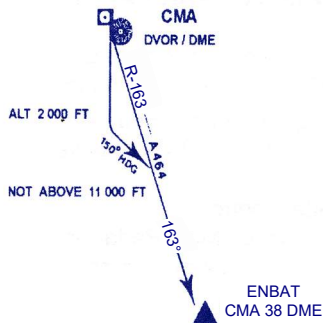


STANDARD INSTRUMENT DEPARTURE RUNWAY 18

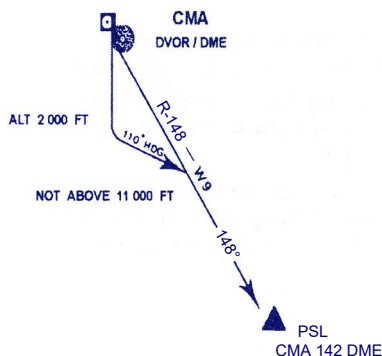
ENBAT ONE ALFA (ENBAT 1A)

Take off, climb runway heading until 2 000 FT, or above, then turn left heading 150° to intercept and proceed on CMA R-163 not above 11 000 FT.
 Expect radar control.
 Contact Chiang Mai Approach on 129.6, 305.4 MHz after take off.



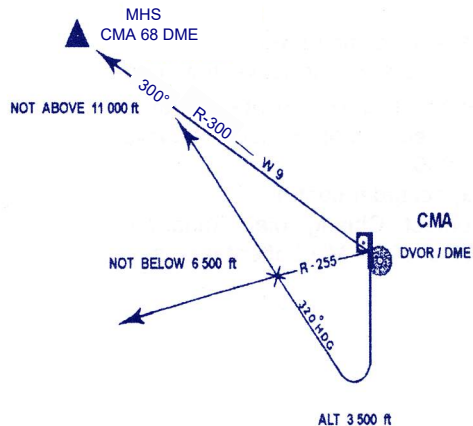
PHITSANULOK ONE ALFA (PSL 1A)

Take off, climb runway heading until 2 000 ft, or above, then turn left heading 110° to intercept and proceed on CMA R-148 not above 11 000 ft. Expect radar control.
 Contact Chiang Mai Approach on 129.6, 305.4 MHz after take-off.



MAE HONG SON ONE ALFA (MHS 1A)

Take off, climb runway heading until 3 500 ft, or above, then turn right heading 320° to cross CMA R-255 not below 6 500 ft, and intercept and proceed on CMA R-300 not above 11 000 ft.
 Expect radar control.
 Contact Chiang Mai Approach on 129.6, 305.4 MHz after take-off.



CHANGE: REVISED CHART.