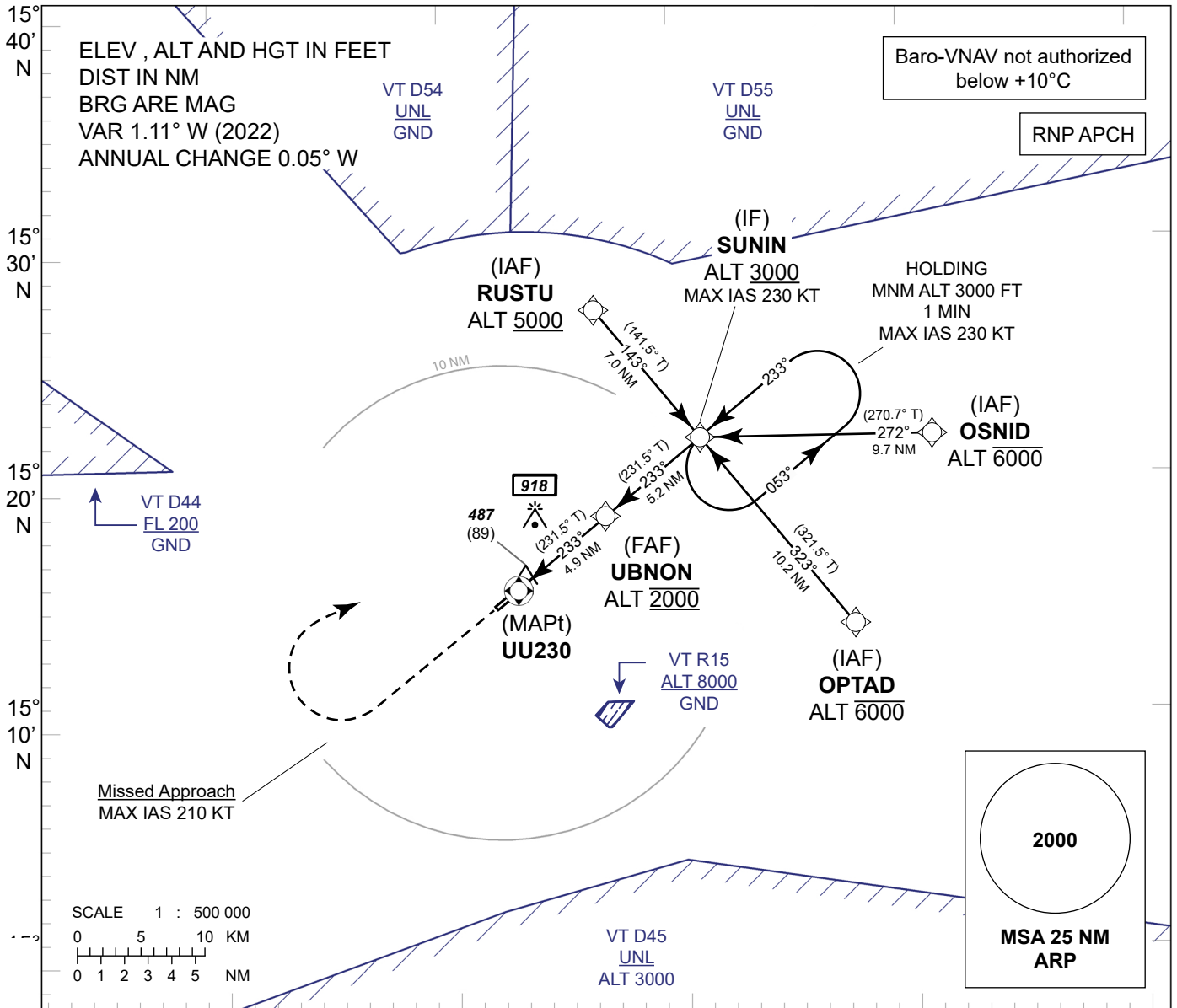


**INSTRUMENT
APPROACH
CHART - ICAO**

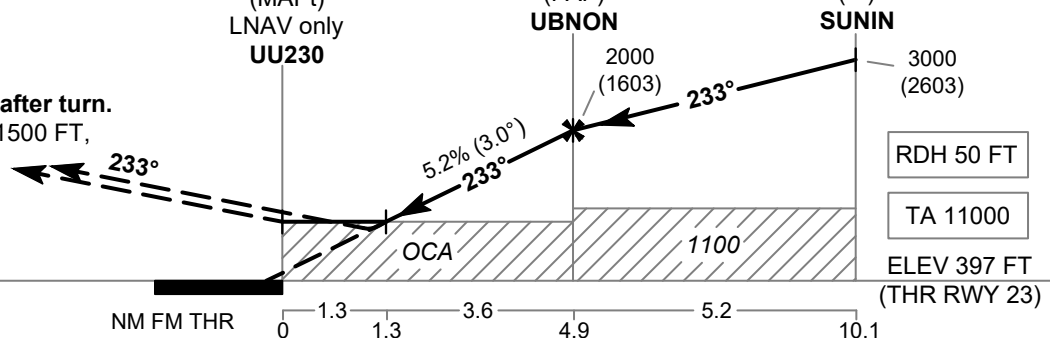
**AERODROME ELEV 411 FT
HEIGHT RELATED TO
THR RWY23 - ELEV 397 FT**

APP : 123.5, 257.8
TWR : 119.9, 274.5
GND : 121.9, 275.8
ATIS : 128.2

**UBON RATCHATHANI /
Ubon Ratchathani (VTUU)
RNP RWY23**



MISSED APPROACH:
No turn before MAPt.
Speed restricted to
MAX IAS 210 KT until after turn.
Climb on track 233° to 1500 FT,
then turn right direct
to SUNIN at minimum
3000 FT and hold
or as directed by ATC.



OCA/H	NM FM THR				NM to NEXT WPT	Distance (NM)						
	A	B	C	D		1.3 NM	2 NM	3 NM	4 NM	FAF		
LNAV / VNAV	760 (363)				Altitude (Height)	860 (463)	1075 (678)	1395 (998)	1710 (1313)	2000 (1603)		
LNAV	860 (463)				Ground speed	knot	70	90	100	120	140	160
Circling (OCH AAL)	1400 (989)				Rate of descent FAF-MAPt 5.2%	ft/min	369	474	527	632	737	843

CHANGE APP FREQ.