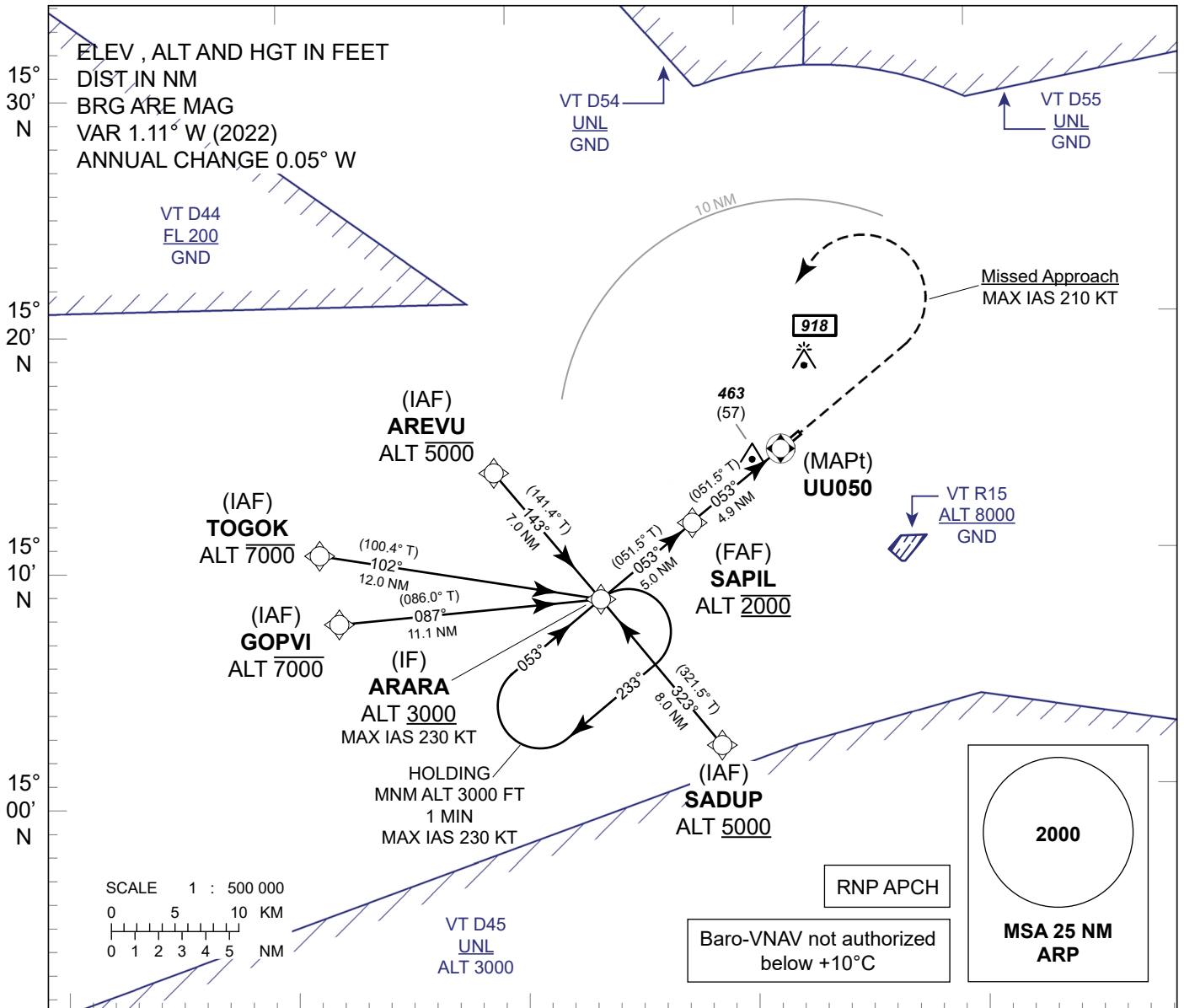


**INSTRUMENT
APPROACH
CHART - ICAO**

**AERODROME ELEV 411 FT
HEIGHT RELATED TO
THR RWY05 - ELEV 411 FT**

APP : 123.5, 257.8
TWR : 119.9, 274.5
GND : 121.9, 275.8
ATIS : 128.2

**UBON RATCHATHANI /
Ubon Ratchathani (VTUU)
RNP RWY05**



	104° 30' E				104° 40' E				104° 50' E				105° 00' E			
	(IF) ARARA				(FAF) SAPIL				(MAPt) LNAV only UU050							
	3000 (2589)				2000 (1589)											
	RDH 50 FT															
	TA 11000															
	ELEV 411 FT				1000				OCA							
	(THR RWY 05)															
	9.9				5.0				4.9				3.3			
									1.6				1.6			
													0			
													NM FM THR			
	OCA/H				A				B				C			
	LNAV / VNAV				890 (479)				Altitude (Height)				2000 (1589)			
													1725 (1314)			
													1410 (999)			
													1090 (679)			
													970 (559)			
	LNAV				970 (559)				Ground speed				knot			
													70			
													90			
													100			
													120			
													140			
													160			
	Circling (OCH AAL)				1400 (989)				Rate of descent FAF-MAPt 5.2%				ft/min			
													369			
													474			
													527			
													632			
													737			
													843			

CHANGE APP FREQ.

MISSED APPROACH:
No turn before MAPt.
Speed restricted to
MAX IAS 210 KT until after turn.
Climb on track 053° to 1500 FT,
then turn left direct to ARARA
at minimum 3000 FT and hold or
as directed by ATC.