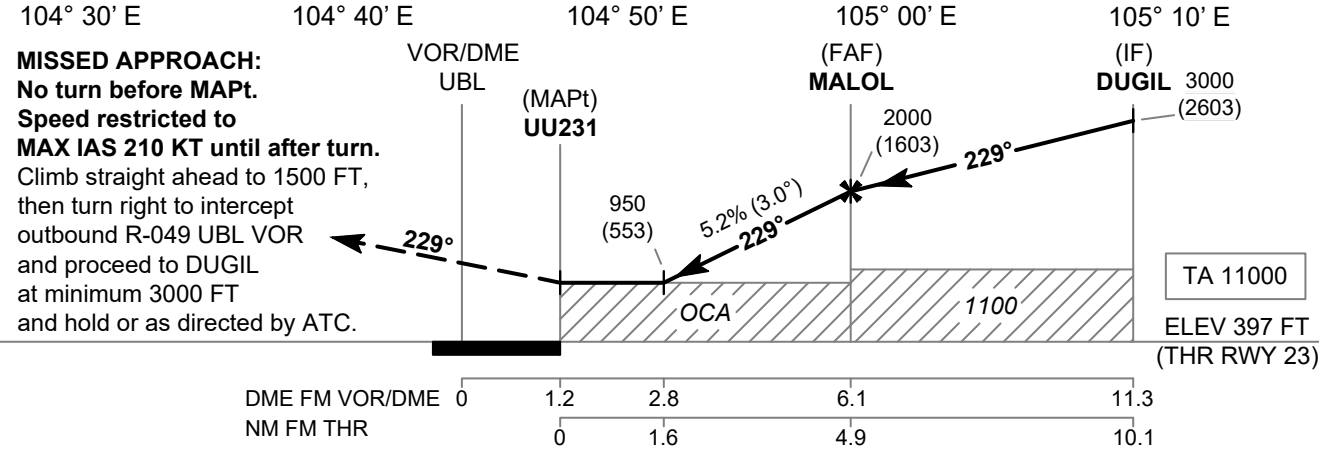
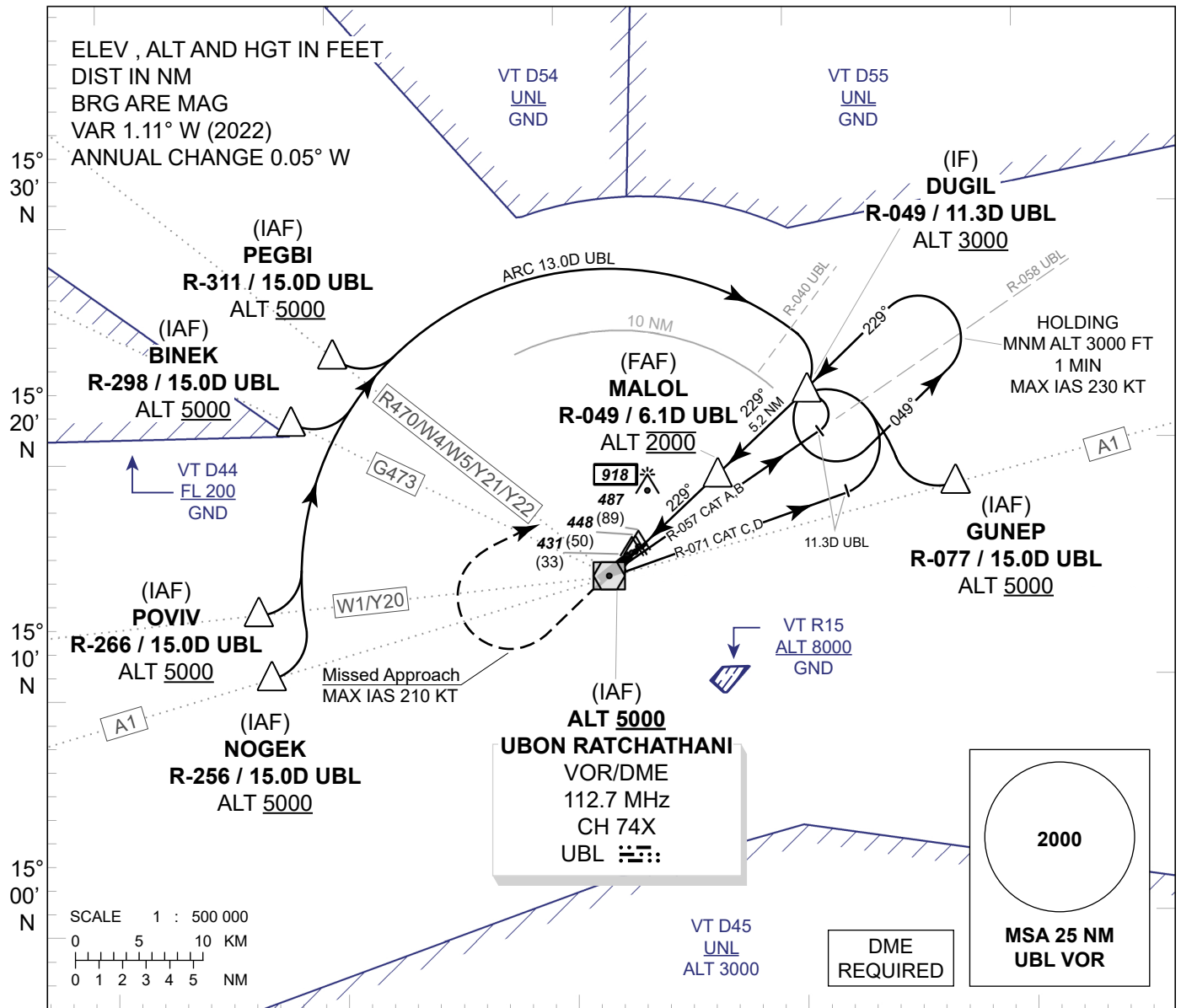


**INSTRUMENT
APPROACH
CHART - ICAO**

**AERODROME ELEV 411 FT
HEIGHT RELATED TO
THR RWY23 - ELEV 397 FT**

APP : 123.5, 257.8
TWR : 119.9, 274.5
GND : 121.9, 275.8
ATIS : 128.2

**UBON RATCHATHANI /
Ubon Ratchathani (VTUU)
VOR RWY23**



MISSED APPROACH:
No turn before MAPt.
Speed restricted to **MAX IAS 210 KT** until after turn.
Climb straight ahead to 1500 FT, then turn right to intercept outbound R-049 UBL VOR and proceed to DUGIL at minimum 3000 FT and hold or as directed by ATC.

DME FM VOR/DME	0	1.2	2.8	6.1	11.3							
NM FM THR	0	1.6	4.9	10.1								
OCA/H	A	B	C	D	Distance (UBL)	2.8 D	3 D	4 D	5 D	6 D	FAF	
Straight - in Approach	950 (553)				Altitude (Height)	950 (552)	1015 (618)	1330 (933)	1650 (1253)	1965 (1568)	2000 (1603)	
					Ground speed	knot	70	90	100	120	140	160
Circling (OCH AAL)	1400 (989)				Rate of descent 5.2%	ft/min	369	474	527	632	737	843

CHANGE: APP FREQ.