

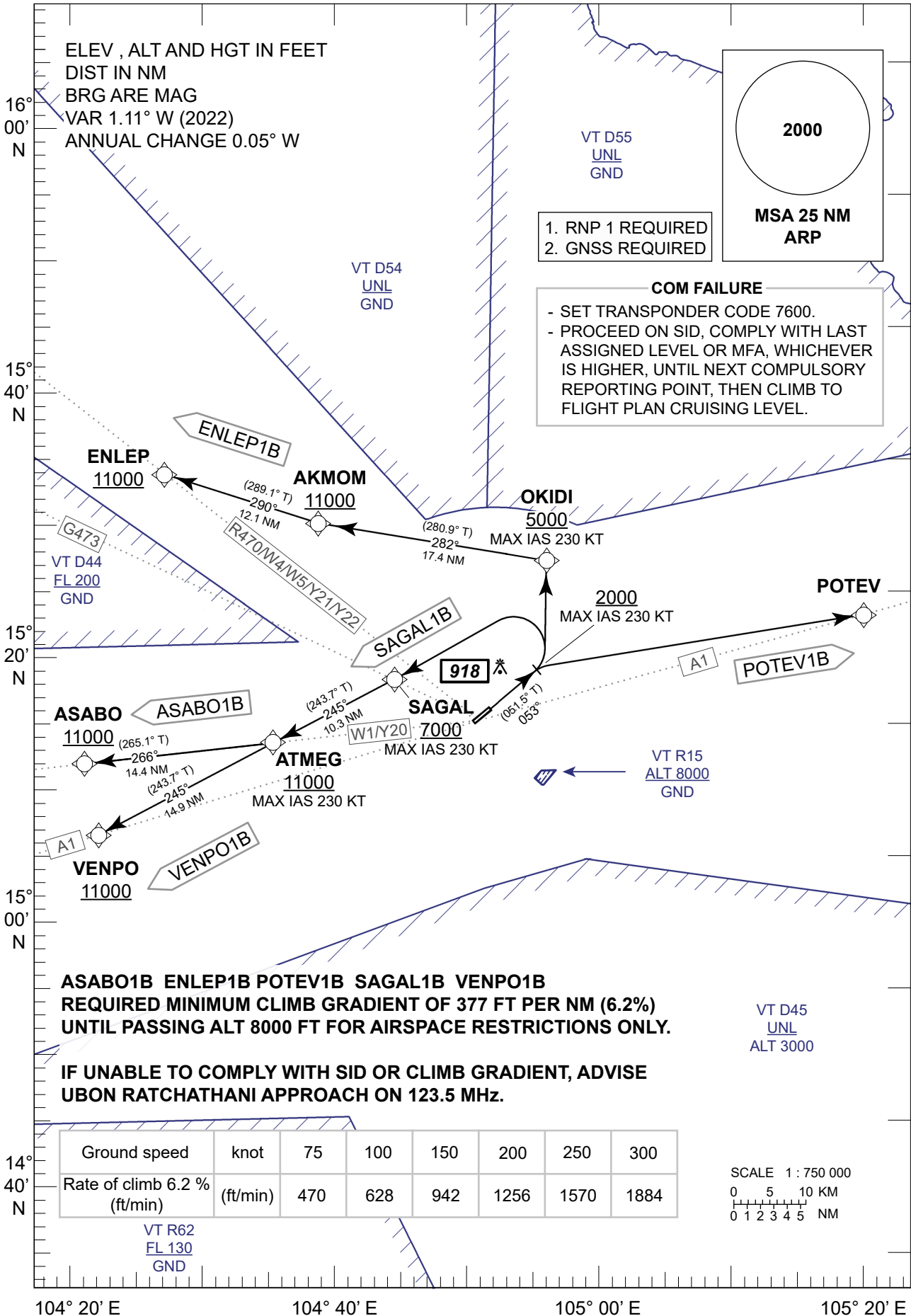
**STANDARD DEPARTURE CHART -
INSTRUMENT (SID) - ICAO**

TRANSITION ALTITUDE
11000 FT

APP : 123.5, 257.8
TWR : 119.9, 274.5
GND : 121.9, 275.8
ATIS : 128.2

**UBON RATCHATHANI /
Ubong Ratchathani (VTUU)
RNAV RWY05**

ASABO1B ENLEP1B POTEV1B SAGAL1B VENPO1B



ELEV, ALT AND HGT IN FEET
DIST IN NM
BRG ARE MAG
VAR 1.11° W (2022)
ANNUAL CHANGE 0.05° W

2000

**MSA 25 NM
ARP**

1. RNP 1 REQUIRED
2. GNSS REQUIRED

COM FAILURE

- SET TRANSPONDER CODE 7600.
- PROCEED ON SID, COMPLY WITH LAST ASSIGNED LEVEL OR MFA, WHICHEVER IS HIGHER, UNTIL NEXT COMPULSORY REPORTING POINT, THEN CLIMB TO FLIGHT PLAN CRUISING LEVEL.

**ASABO1B ENLEP1B POTEV1B SAGAL1B VENPO1B
REQUIRED MINIMUM CLIMB GRADIENT OF 377 FT PER NM (6.2%)
UNTIL PASSING ALT 8000 FT FOR AIRSPACE RESTRICTIONS ONLY.**

**IF UNABLE TO COMPLY WITH SID OR CLIMB GRADIENT, ADVISE
UBON RATCHATHANI APPROACH ON 123.5 MHz.**

Ground speed	knot	75	100	150	200	250	300
Rate of climb 6.2 % (ft/min)	(ft/min)	470	628	942	1256	1570	1884

SCALE 1 : 750 000
0 5 10 KM
0 1 2 3 4 5 NM

CHANGE: APP FREQ.