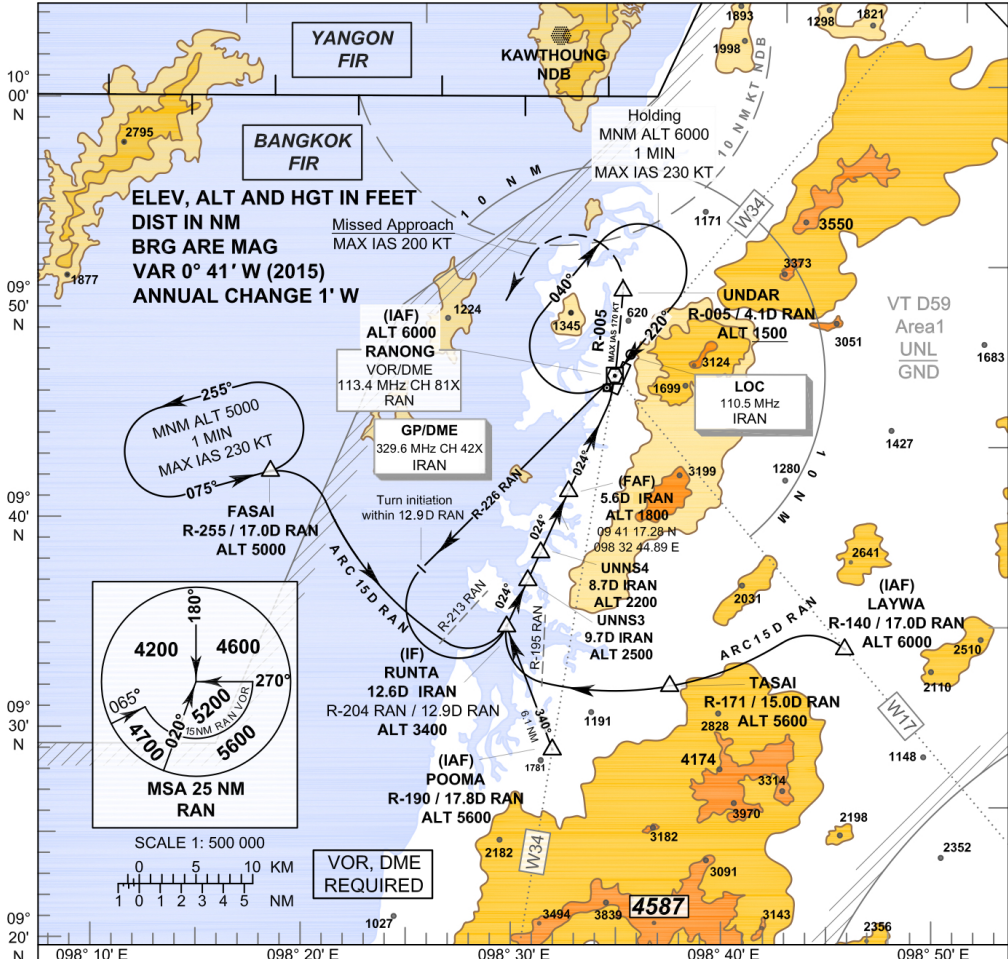


**INSTRUMENT APPROACH CHART - ICAO**

**AERODROME ELEV 57 FT  
HEIGHTS RELATED TO THR RWY 02 - ELEV 36 FT**

APP : 125.1  
TWR : 122.25 , 236.6  
ATIS : 126.475

**RANONG / Ranong (VTSR)  
LOC RWY02**



**MISSED APPROACH:**  
No turn before MAPt.  
Speed restricted to MAX IAS 170 KT until UNDAR and 200 KT until after turn.  
At MAPt, turn left climb to intercept R-005 RAN VOR until UNDAR at or above 1500 FT.  
After UNDAR, turn left to intercept outbound R-255 RAN VOR, then proceed to FASAI at 5000 FT and hold or as directed by ATC

OCA/H	Distance (IRAN)				Distance (IRAN)				Distance (IRAN)						
	A	B	C	D	A	B	C	D	A	B	C	D			
Straight - in Approach	970 (934)				Altitude (Height)				1800 (1764)	1610 (1574)	1290 (1254)	970 (934)			
					Ground speed				knot	70	90	100	120	140	160
Circling (OCH AAL)	Not Authorized				Rate of descent				(ft/min)	369	474	527	632	737	843

**NOTE : OCA (OCH): 650 (614) FT; MAPt at 1.9 D FM GP/DME can be achieved for all aircraft categories which can commence a missed approach climb gradient of 5.0%(304 FT/NM) until passing UNDAR.**

CHANGE : WP RUNTA, UNNS4, FAF, MAPt, CG 5.0% AND THR DME FROM GP/DME.  
WP RUNTA AND POOMA TRACK FROM VOR, WP FASAI AND TASAI RADIAL FROM VOR.  
WP FASAI HOLDING COURSE, TRACK FROM WP POOMA TO IF, TURN INITIATION DISTANCE.  
MISSED APPROACH OUTBOUND RADIAL INTERCEPT.