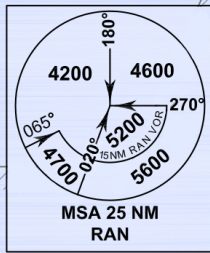
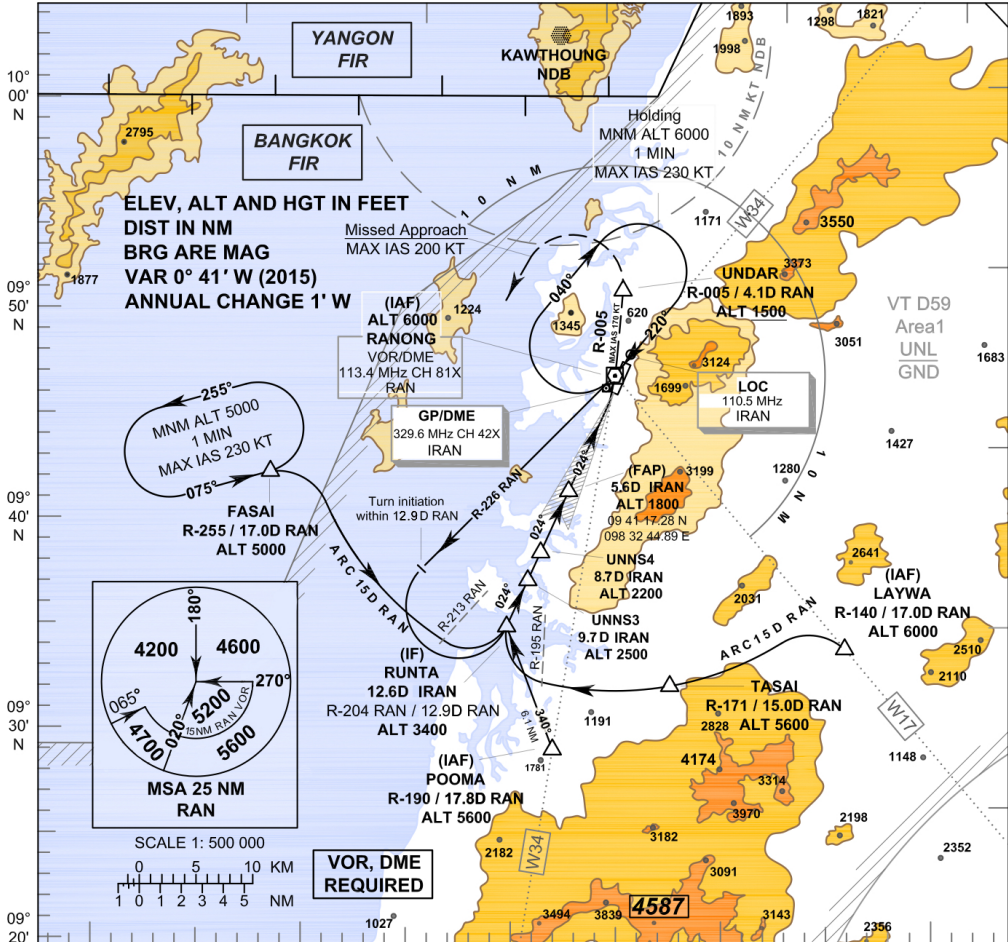


**INSTRUMENT APPROACH CHART - ICAO**

**AERODROME ELEV 57 FT**  
**HEIGHTS RELATED TO THR RWY 02 - ELEV 36 FT**

APP : 125.1  
 TWR : 122.25, 236.6  
 ATIS : 126.475

**RANONG / Ranong (VTSR) ILS RWY02**



	(IF) RUNTA	(FAP)	VOR/DME RAN	UNRAR	MISSED APPROACH:					
	UNN3	UNN4			Speed restricted to MAX IAS 170 KT until UNRAR and 200 KT until after turn.					
					At OCA, turn left climb to intercept R-005 RAN VOR until UNRAR at or above 1500 FT.					
					After UNRAR, turn left to intercept outbound R-255 RAN VOR, then proceed to FASAI at 5000 FT and hold or as directed by ATC.					
					GP/DME					
					DME FM GP/DME					
					NM FM THR					
					CG 2.5%					
					CG 5.0%					
					GP 3.0°					
					ELEV 36 FT					
					RDH 50 FT					
					TA 11000					
					ELEV 57 FT					
					THR RWY 02					
					OCA/H					
					A B C D					
					Ground speed					
					knot					
					70 90 100 120 140 160					
					Rate of descent					
					(ft/min)					
					372 478 531 637 743 849					
					Circling (OCH AAL)					
					Not Authorized					

**NOTE : OCA (OCH): 580 (544) FT can be achieved for all aircraft categories which can commence a missed approach climb gradient of 5.0%(304 FT/NM) until passing UNRAR.**

CHANGE: WP, RUNTA, UNN3, FAP AND THR RWY 02 FROM 5.0% DME  
 WP RUNTA AND POOMA DISTANCE FROM VOR WP FASAI AND UNRAR DISTANCE FROM VOR  
 WP FASAI HOLDING COURSE TRACK FROM WP POOMA TO IE, TURN INITIATION DISTANCE.  
 MISSED APPROACH OUTBOUND RADIAL INTERCEPT.