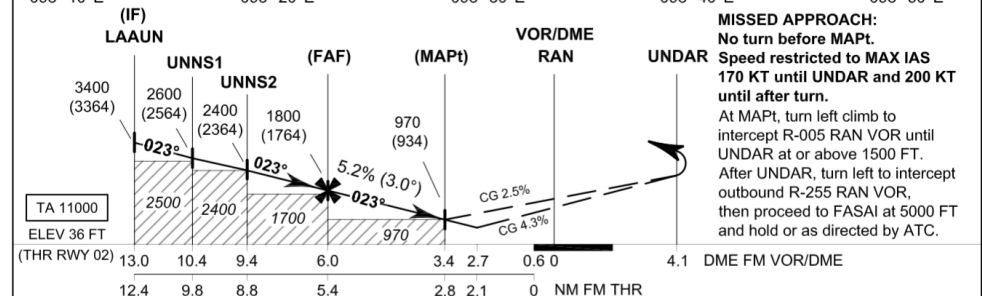
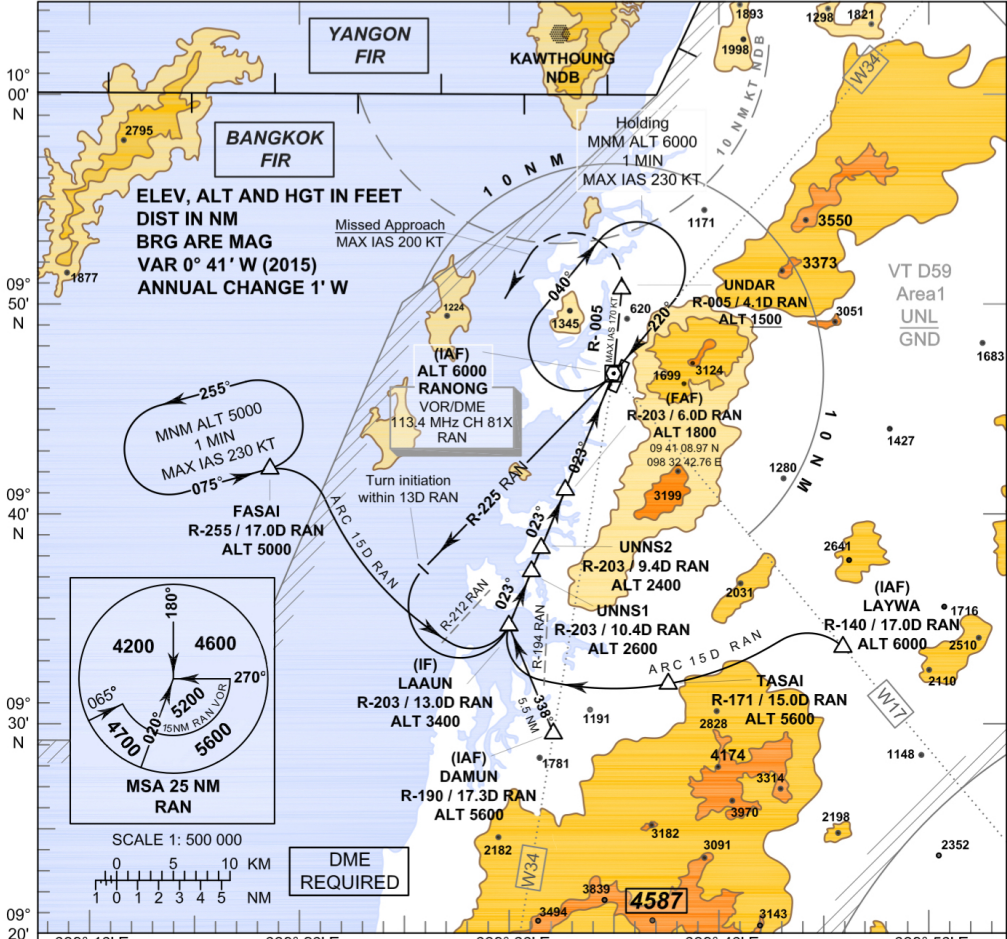


INSTRUMENT APPROACH CHART - ICAO

**AERODROME ELEV 57 FT
HEIGHTS RELATED TO THR RWY 02 - ELEV 36 FT**

APP : 125.1
TWR : 122.25 , 236.6
ATIS : 126.475

**RANONG / Ranong (VTSR)
VOR RWY02**



OCA/H	A	B	C	D	Distance (RAN)	FAF	5 D	4 D	3.4 D		
Straight-in Approach	970 (934)				Altitude (Height)	1800 (1764)	1475 (1439)	1160 (1124)	970 (934)		
					Ground speed	knot 70	90	100	120	140	160
Circling (OCH AAL)	Not Authorized				Rate of descent	(ft/min) 369	474	527	632	737	843

NOTE : OCA (OCH): 760 (724) FT; MAPt at 2.7 D FM VOR/DME can be achieved for all aircraft categories which can commence a missed approach climb gradient of 4.3% (261 FT/NM) until passing UNDAR.

CHANGE: WP FASAI, TASAI AND DAMUN RADIAL FROM VOR. WP DAMUN DISTANCE FROM VOR. MISSED APPROACH RADIAL INTERCEPT.