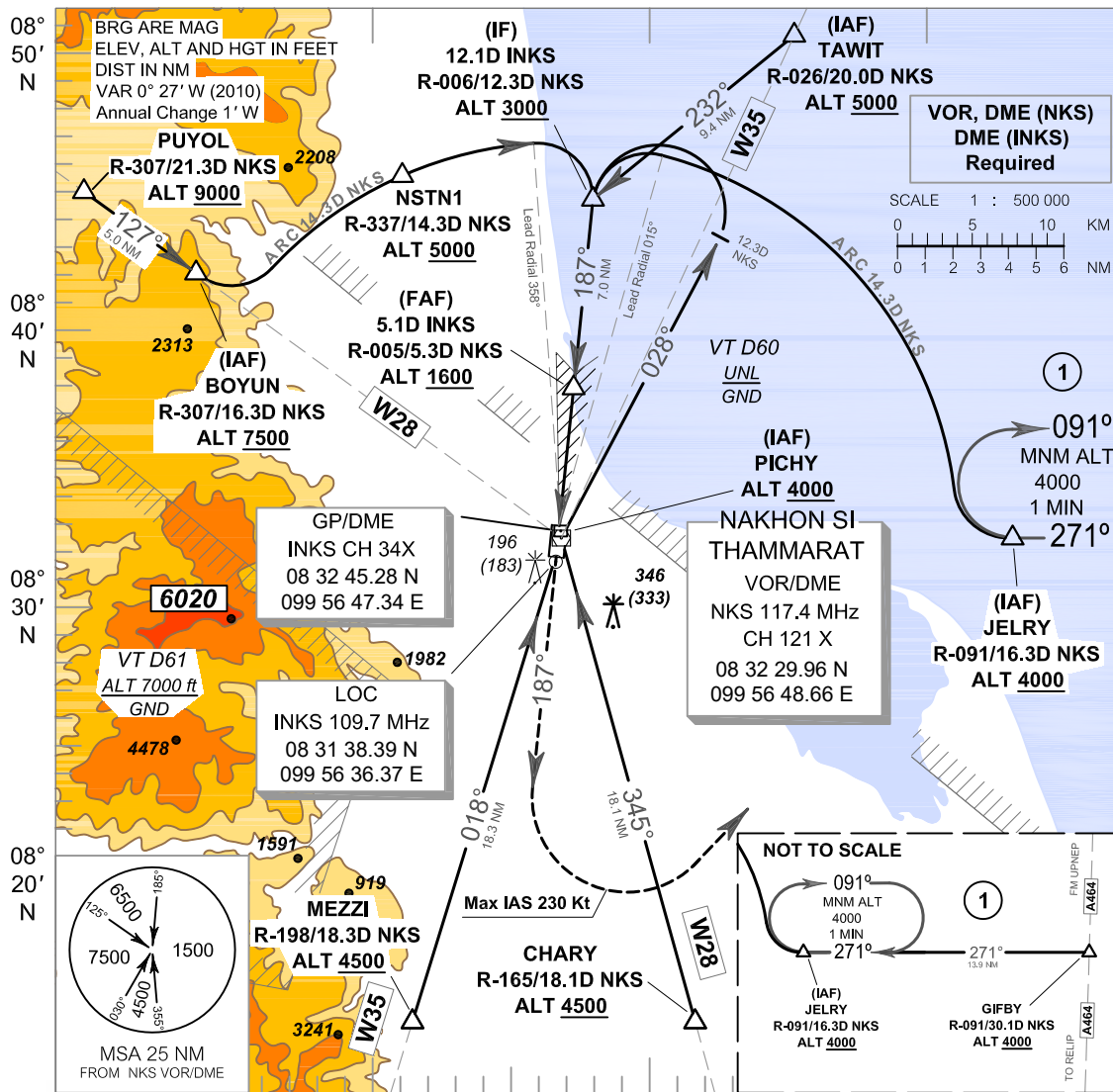


INSTRUMENT AERODROME ELEV. 13 ft
 APPROACH HEIGHTS RELATED TO
 CHART - ICAO THR RWY 19 ELEV. 13 ft

APP : 119.75
 TWR : 122.55, 236.6
 GND : 121.9
 ATIS : 123.4

NAKHON SI THAMMARAT /
Nakhon Si Thammarat (VTSF)
 ILS or LOC z RWY 19



CHANGE: LOC, GP/DME AND VOR/DME COORDINATES.

MISSED APPROACH :
 Climb straight ahead to 2000 ft then turn left to intercept R-091 NKS and continue climb to JELRY at 4000 ft and hold or as directed by ATC.

	VOR/DME	(MAPt)	(FAF)	(IF)
LOC		LOC only		
GP/DME		450 (437)	1600 (1587)	3000 (2987)
NKS		GP 3° (5.2%)		
		450	600	
				RDH 50 FT
				TA 11000
				ELEV 13 ft. (THR RWY 19)
NM FM THR 19	0	1.2	4.9	11.9
DME FM GP/DME	0	0.2	1.4	5.1
DME FM VOR/DME	0	0.4	1.6	5.3

		OCA/H	A	B	C	D	Distance (INKS)	MAPt	2D	3D	4D	5D	FAF
Straight - in approach	CAT I			220 (207)			Altitude (Height)	450 (437)	630 (617)	950 (937)	1265 (1252)	1580 (1567)	1600 (1587)
							Ground speed (GS)	knot	100	120	140	160	180
LOC Only			450 (437)				Rate of descent (ft/min)	530	630	740	845	950	1055
Circling (OCH AAL)			740 (727)										