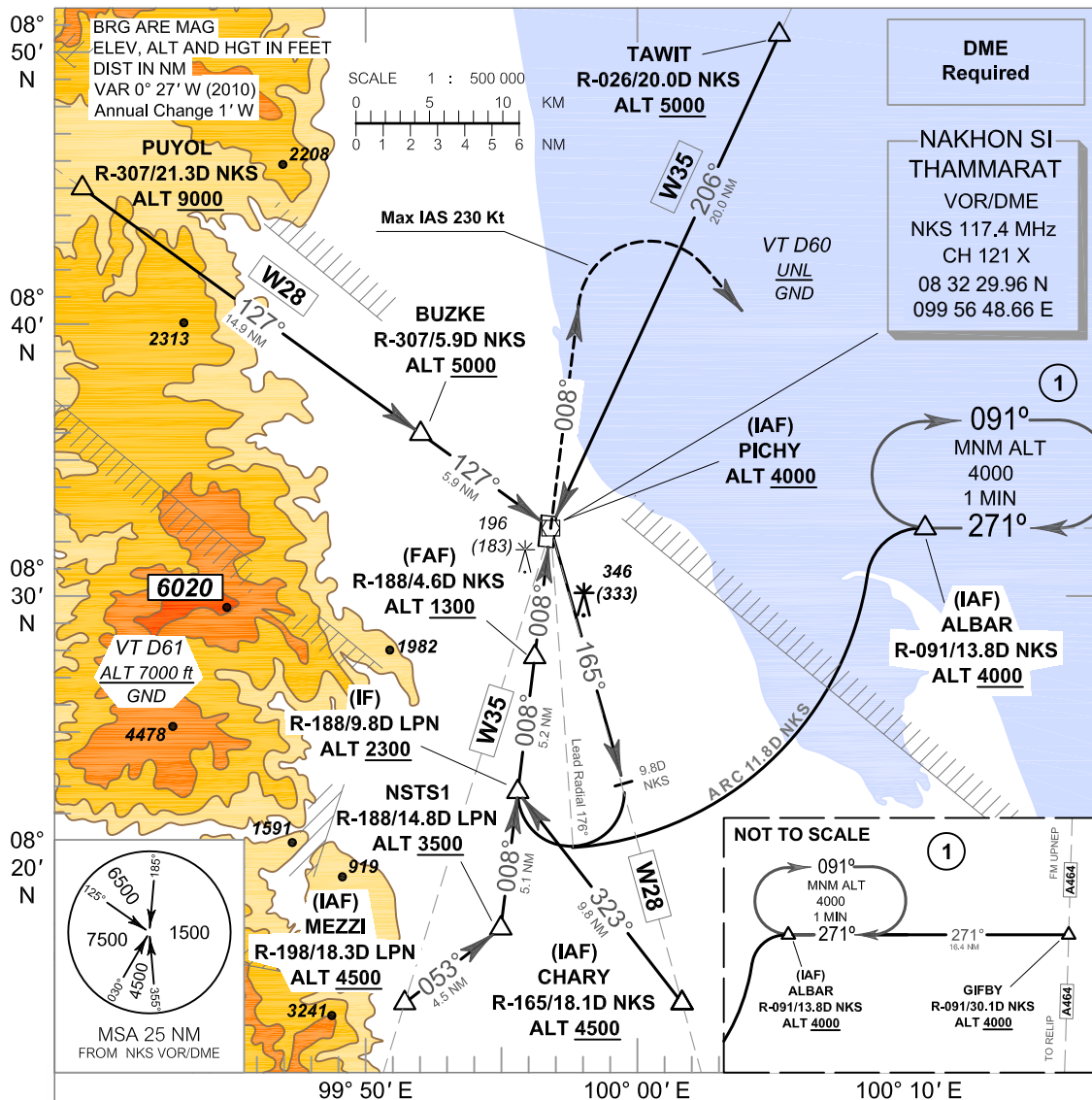


INSTRUMENT APPROACH CHART - ICAO
AERODROME ELEV. 13 ft
 HEIGHTS RELATED TO AERODROME ELEV.

APP : 119.75
 TWR : 122.55, 236.6
 GND : 121.9
 ATIS : 123.4

NAKHON SI THAMMARAT /
Nakhon Si Thammarat (VTSF)
VOR RWY 01



CHANGE: VOR/DME COORDINATE:

MISSED APPROACH :
 Climb straight ahead to 2000 ft then turn right to intercept R-091 NKS and continue climb to ALBAR at 4000 ft and hold or as directed by ATC.

ELEV 13 ft. (THR RWY 01)	9.1	3.9	1.4	0	NM FM THR 01 DME FM VOR/DME						
	9.8	4.6	2.1	0.7 0							
OCA/H	A	B	C	D	Distance (NKS)	FAF	4D	3D	MAPt		
Straight - in approach	500 (487)				Altitude (Height)	1300 (1287)	1105 (1092)	790 (777)	500 (487)		
						Ground speed (GS)	knot	100	120	140	160
Circling (OCH AAL)	740 (727)				Rate of descent (ft/min)	530	630	740	845	950	1055