

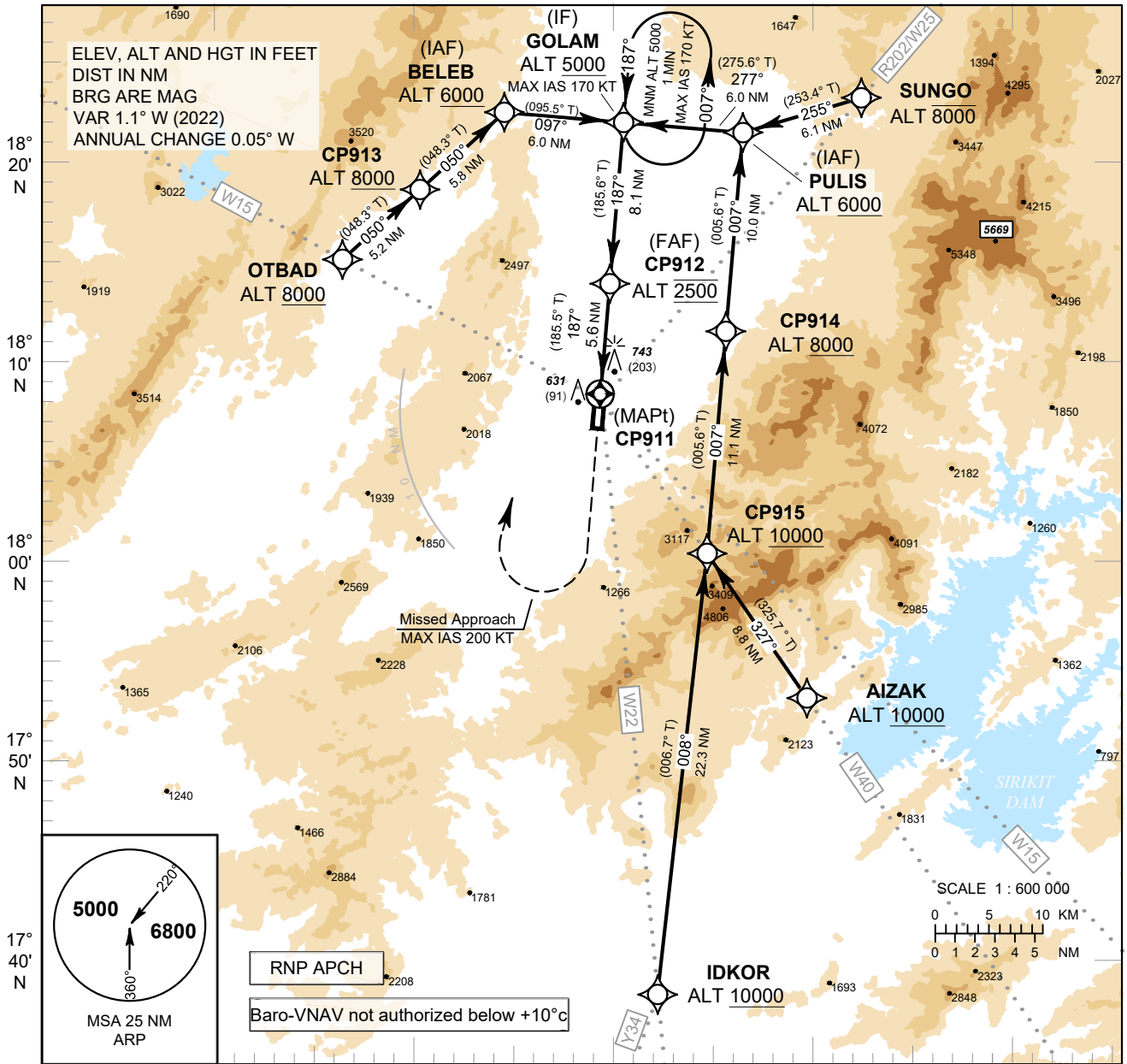
**INSTRUMENT
APPROACH
CHART - ICAO**

**AERODROME ELEV 540 FT
HEIGHTS RELATED TO
THR RWY19 - ELEV 537 FT**

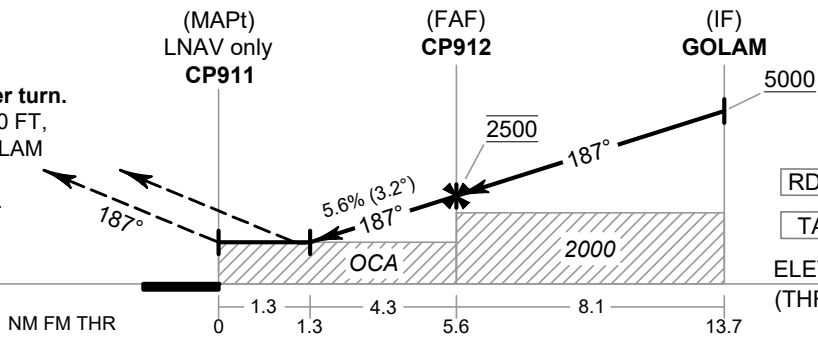
APP : 120.1 MHz
TWR : 118.6, 236.6 MHz
ATIS : 340.0 kHz

PHRAE / Phrae (VTCP)

RNP RWY19



MISSED APPROACH :
No turn before MAPt.
Speed restricted to
MAX IAS 200 KT until after turn.
Climb on track 187° to 2000 FT,
then turn right direct to GOLAM
at minimum 5000 FT and
hold or as directed by ATC.



| OCA/H | A | B | C | NM to NEXT WPT | 1.3 NM | 2 NM | 3 NM | 4 NM | 5 NM | FAF | | |
|--------------------|-------------|---|---|-------------------|------------|------------|-------------|-------------|-------------|-------------|-----|-----|
| LNAV/VNAV | 880 (343) | | | Altitude (Height) | 1030 (493) | 1270 (733) | 1610 (1073) | 1950 (1413) | 2290 (1753) | 2500 (1963) | | |
| LNAV | 1030 (493) | | | Ground Speed | knot | 70 | 90 | 100 | 120 | 140 | 160 | |
| Circling (OCH AAL) | 1700 (1160) | | | Rate of Descent | 5.6% | ft/min | 397 | 510 | 567 | 681 | 794 | 907 |

CHANGE : REVISED CHART.