

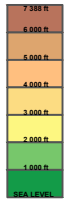
# WORLD AERONAUTICAL CHART- ICAO

## 1 : 1 000 000

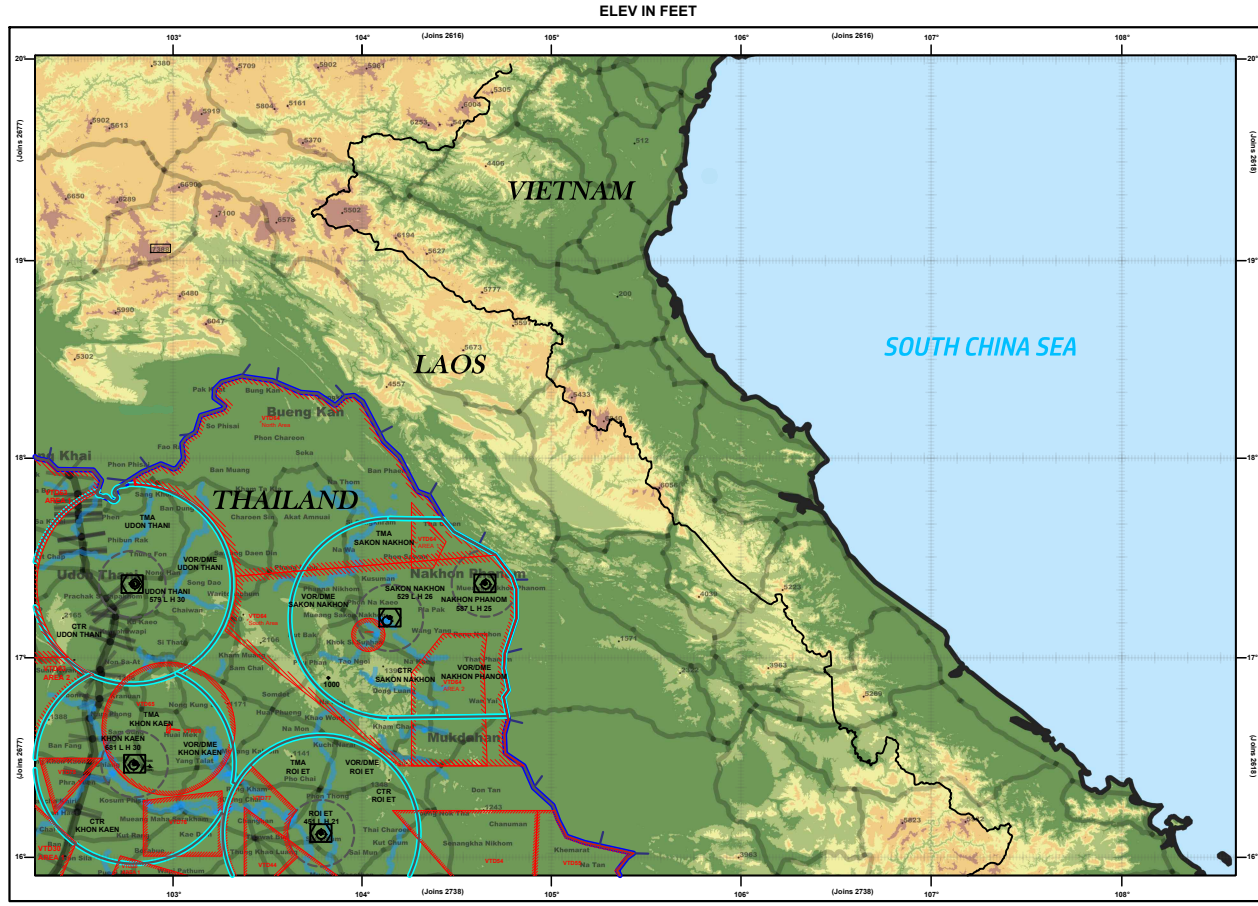
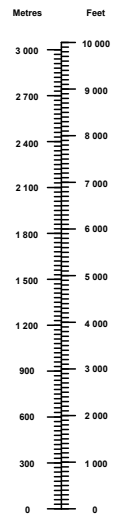
(2617) MEKONG RIVER

Lambert Conformal Conic Projection  
Standard Parallels 16°40' and 19°20'

HYSOMETRIC  
TINTS  
FEET



CONVERSION  
TABLE

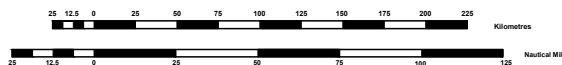


Published by The Civil Aviation Authority of Thailand , 2025

ELEV IN FEET

SCALE 1 : 1 000 000

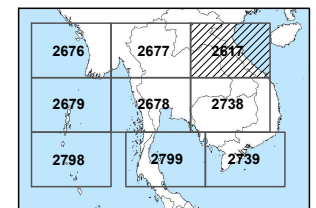
Contour basic interval 1000 ft.



Compiled by the mapping unit from the following sources :  
(a) Magnetic information for the year 2025, as supplied by the National Oceanic & Atmospheric Administration (NOAA)  
(b) Aeronautical information as supplied by Aeronautical Information Management Department (AIM), Thailand

MEKONG RIVER (2617)

INDEX TO ADJOINING SHEETS



**CAUTION**  
Consult respective Aeronautical Information Products of States concerned for the latest aeronautical information AND The Civil Aviation Authority of Thailand does not accept responsibility for any errors or omissions in the information shown outside of Thailand Territory.

MAGNETIC INFORMATION FOR THE YEAR 2025  
Aeronautical Information : April 2025

NOTE : THIS MAP IS NOT AN AUTHORITY ON BOUNDARIES

LEGEND		AIR TRAFFIC SERVICES SYSTEM		RADIO NAVIGATION AIDS		AERODROMES	
Province	Small river (perennial)	Control zone (CTR)	Collocated VOR and DME radio navigation aids (VOR/DME)	Civil	Non-directional radio beacon (NDB)	Civil	
District	Isogonic line	Terminal control area (TMA)	Non-directional radio beacon (NDB)	Military	Tactical air navigation aid (TACAN)	Military	
Railroad	Highest elevation on chart	Restricted airspace (prohibited, restricted or danger area)	Flight information region (FIR)	Joint Civil and Military			
Road	Spot elevation	Air defence identification zone (ADIZ)					

