

**STANDARD ARRIVAL CHART -
INSTRUMENT (STAR) - ICAO**

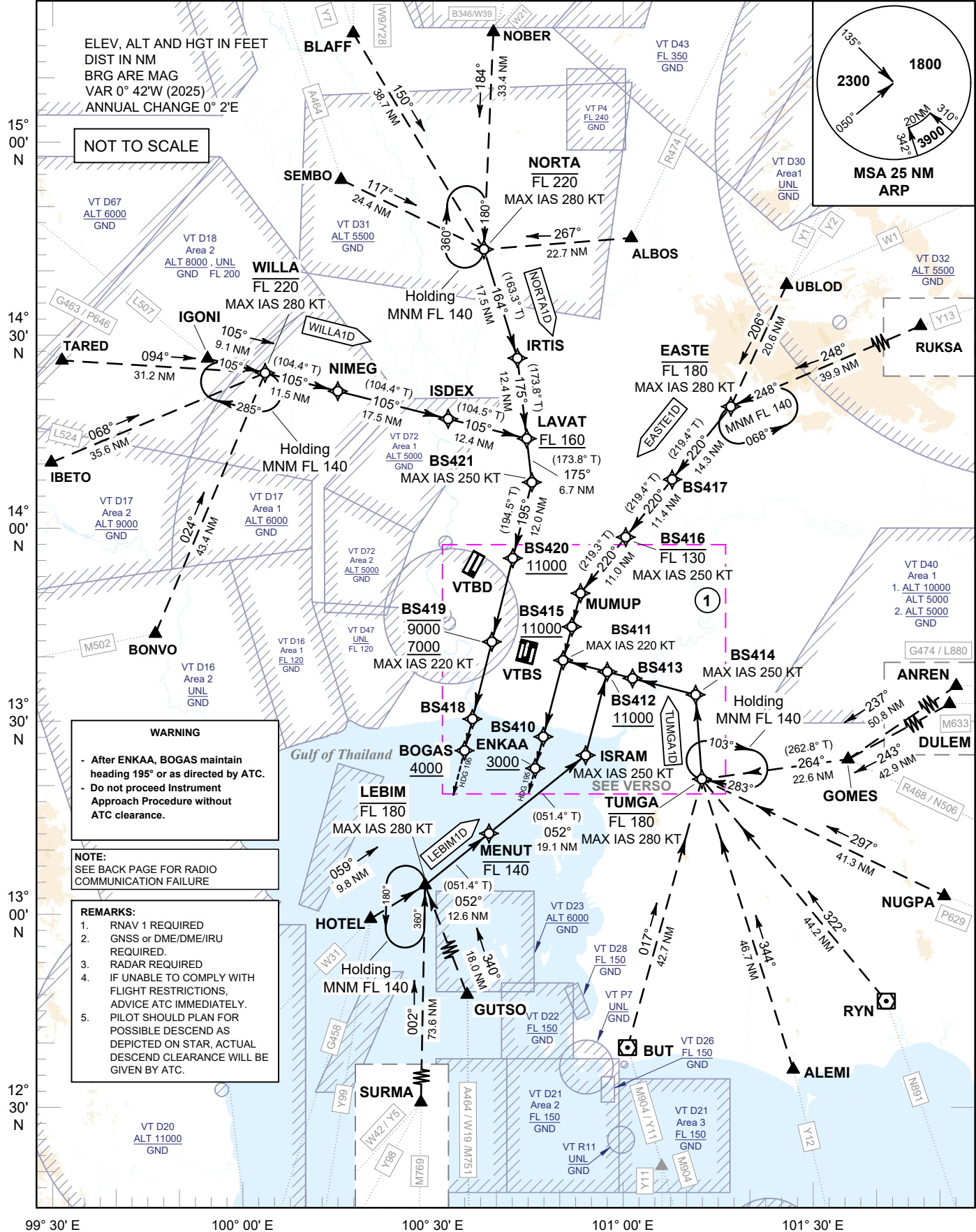
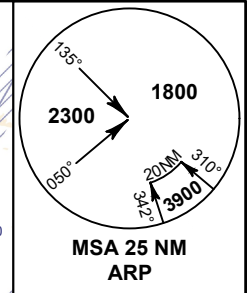
TRANSITION ALTITUDE
11000 FT

SPEED RESTRICTION
MAX IAS 250 KT AT OR
BELOW ALT 10000 FT
UNLESS OTHERWISE
AUTHORIZED BY ATC.

APP	: 119.1, 274.5
	: 120.3, 274.5
	: 133.4, 274.5
	: 122.35, 274.5
	: 124.35, 274.5
	: 125.2, 274.5
ARR	: 121.1, 274.5
	: 126.3, 274.5
TWR	: 118.2, 262.5
	: 119.0
ARR ATIS	: 133.6, 278.6

BANGKOK/Suvarnabhumi Intl (VTBS)
RNAV RWY01/02L/02R

EASTE1D LEBIM1D NORTA1D
TUMGA1D WILLA1D



ELEV, ALT AND HGT IN FEET
DIST IN NM
BRG ARE MAG
VAR 0° 42'W (2025)
ANNUAL CHANGE 0° 2'E

NOT TO SCALE

WARNING

- After ENKAA, BOGAS maintain heading 195° or as directed by ATC.
- Do not proceed Instrument Approach Procedure without ATC clearance.

NOTE:
SEE BACK PAGE FOR RADIO COMMUNICATION FAILURE

REMARKS:

1. RNAV 1 REQUIRED
2. GNSS or DME/DME/IRU REQUIRED.
3. RADAR REQUIRED
4. IF UNABLE TO COMPLY WITH FLIGHT RESTRICTIONS, ADVISE ATC IMMEDIATELY.
5. PILOT SHOULD PLAN FOR POSSIBLE DESCEND AS DEPICTED ON STAR, ACTUAL DESCEND CLEARANCE WILL BE GIVEN BY ATC.

CHANGE: MAG VAR.

99° 30' E 100° 00' E 100° 30' E 101° 00' E 101° 30' E