

**STANDARD DEPARTURE CHART - INSTRUMENT (SID) - ICAO**

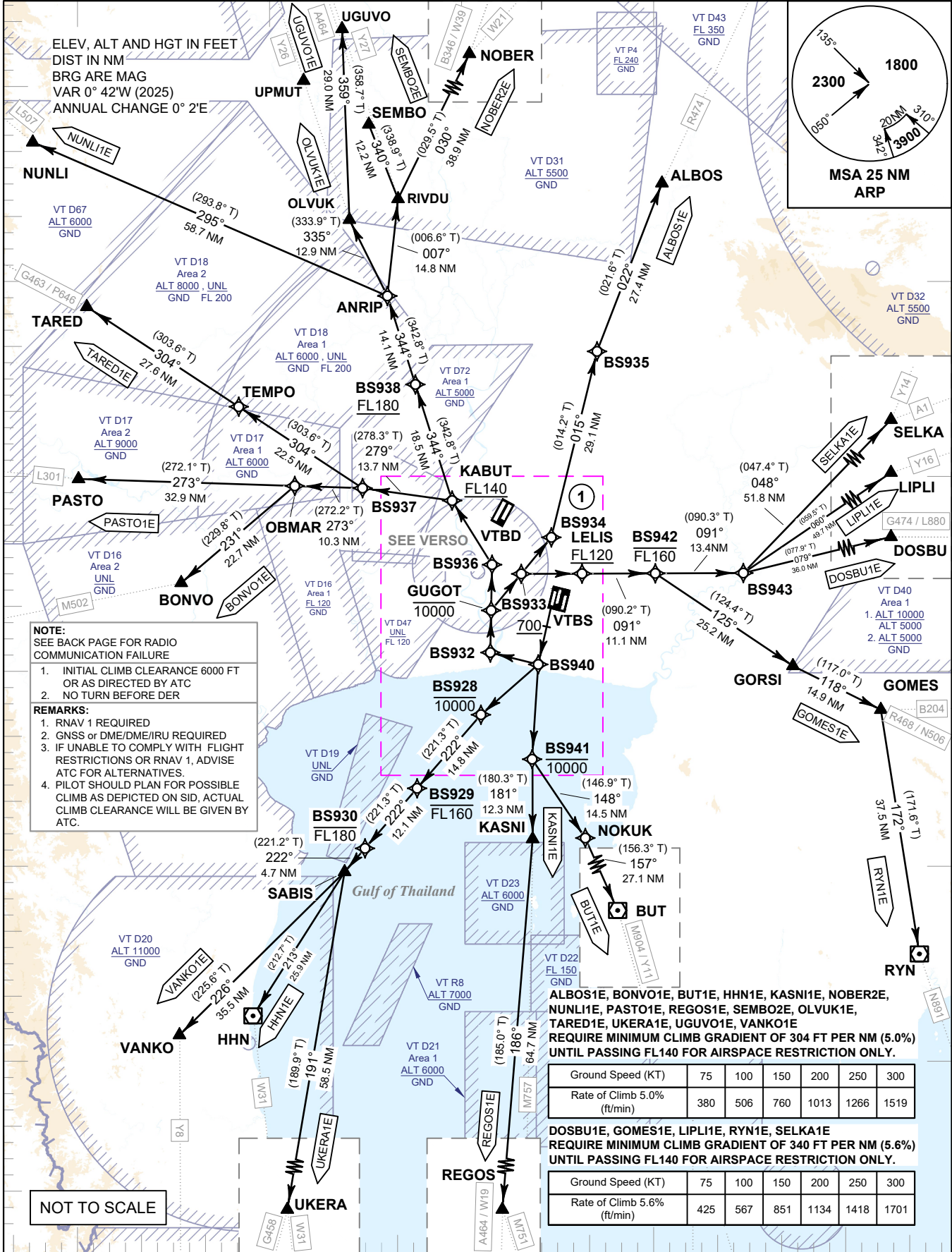
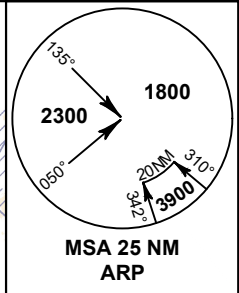
TRANSITION ALTITUDE  
11000 FT

**SPEED RESTRICTION**  
MAX IAS 250 KT AT OR BELOW ALT 10000 FT UNLESS OTHERWISE AUTHORIZED BY ATC.

APP : 119.1, 274.5  
: 120.3, 274.5  
: 133.4, 274.5  
: 122.35, 274.5  
: 124.35, 274.5  
: 125.2, 274.5  
ARR : 121.1, 274.5  
: 126.3, 274.5  
TWR : 118.2, 262.5  
: 119.0  
DEP ATIS : 127.65

**BANGKOK/Suvarnabhumi Intl (VTBS)  
RNAV RWY20R**

ALBOS1E BONVO1E BUT1E DOSBU1E  
GOMES1E HHN1E KASNI1E LIPLI1E  
NOBER2E NUNLI1E OLVUK1E PASTO1E  
REGOS1E RYN1E SELKA1E SEMBO2E  
TARED1E UKERA1E UGUVO1E VANKO1E



**NOTE:**  
SEE BACK PAGE FOR RADIO COMMUNICATION FAILURE

- INITIAL CLIMB CLEARANCE 6000 FT OR AS DIRECTED BY ATC
- NO TURN BEFORE DER

**REMARKS:**

- RNAV 1 REQUIRED
- GNS or DME/DME/IRU REQUIRED
- IF UNABLE TO COMPLY WITH FLIGHT RESTRICTIONS OR RNAV 1, ADVISE ATC FOR ALTERNATIVES.
- PILOT SHOULD PLAN FOR POSSIBLE CLIMB AS DEPICTED ON SID, ACTUAL CLIMB CLEARANCE WILL BE GIVEN BY ATC.

ALBOS1E, BONVO1E, BUT1E, HHN1E, KASNI1E, NOBER2E, NUNLI1E, PASTO1E, REGOS1E, SEMBO2E, OLVUK1E, TARED1E, UKERA1E, UGUVO1E, VANKO1E  
REQUIRE MINIMUM CLIMB GRADIENT OF 304 FT PER NM (5.0%) UNTIL PASSING FL140 FOR AIRSPACE RESTRICTION ONLY.

Ground Speed (KT)	75	100	150	200	250	300
Rate of Climb 5.0% (ft/min)	380	506	760	1013	1266	1519

DOSBU1E, GOMES1E, LIPLI1E, RYN1E, SELKA1E  
REQUIRE MINIMUM CLIMB GRADIENT OF 340 FT PER NM (5.6%) UNTIL PASSING FL140 FOR AIRSPACE RESTRICTION ONLY.

Ground Speed (KT)	75	100	150	200	250	300
Rate of Climb 5.6% (ft/min)	425	567	851	1134	1418	1701

CHANGE: MAG VAR. FREQ.

NOT TO SCALE

99° 30' E      100° 00' E      100° 30' E      101° 00' E      101° 30' E