

STANDARD DEPARTURE CHART - INSTRUMENT (SID) - ICAO

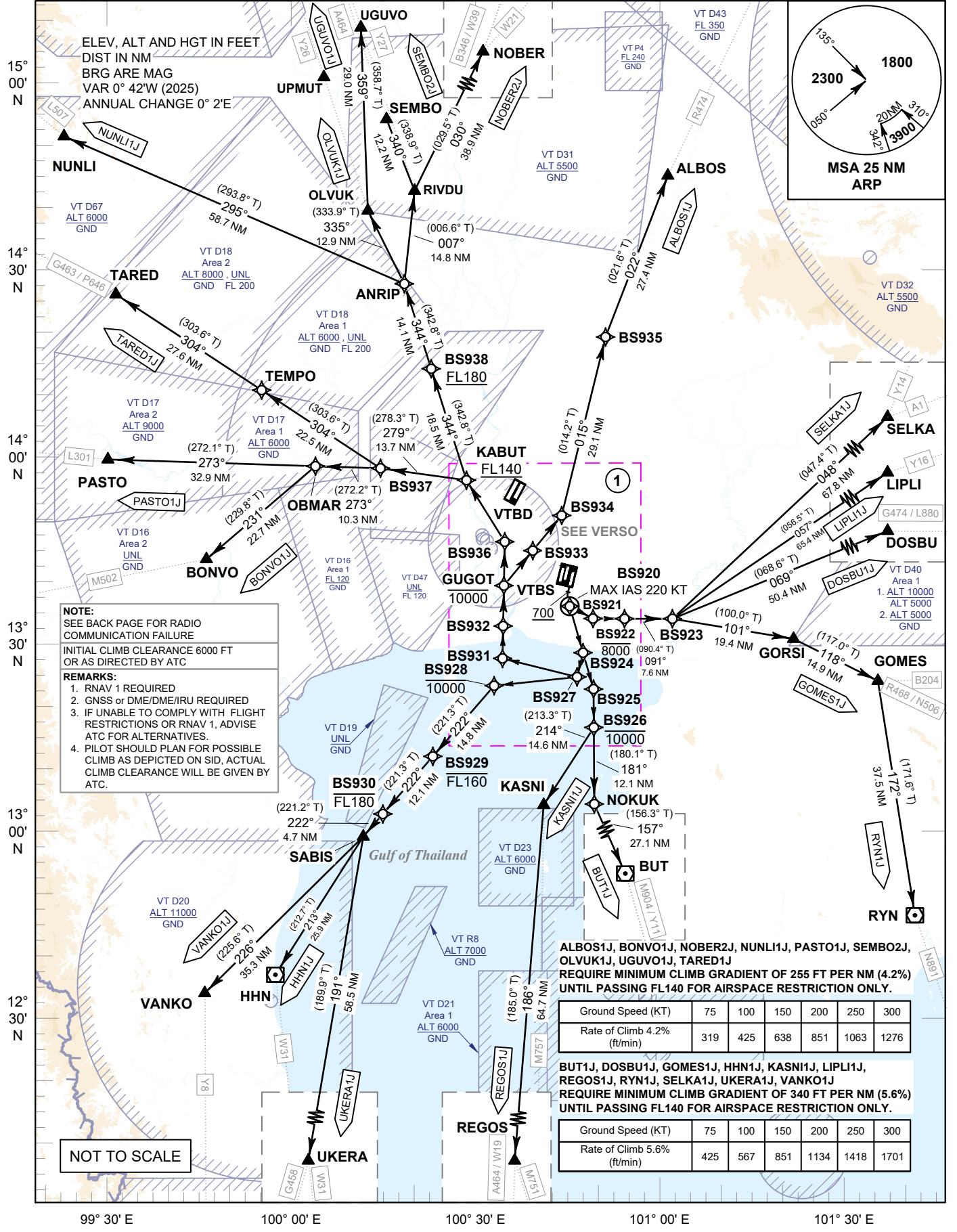
TRANSITION ALTITUDE
11000 FT

SPEED RESTRICTION
MAX IAS 250 KT AT OR BELOW ALT 10000 FT UNLESS OTHERWISE AUTHORIZED BY ATC.

APP : 119.1, 274.5
: 120.3, 274.5
: 133.4, 274.5
: 122.35, 274.5
: 124.35, 274.5
: 125.2, 274.5
ARR : 121.1, 274.5
: 126.3, 274.5
TWR : 118.2, 262.5
: 119.0
DEP ATIS : 127.65

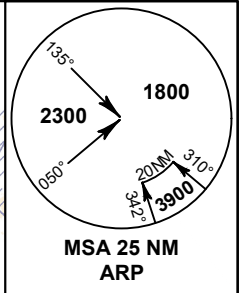
**BANGKOK/Suvarnabhumi Intl (VTBS)
RNAV RWY19**

ALBOS1J BONVO1J BUT1J DOSBU1J
GOMES1J HHN1J KASNI1J LIPL1J
NOBER2J NUNLI1J OLVUK1J PASTO1J
REGOS1J RYN1J SELKA1J SEMBO2J
TARED1J UKERA1J UGUVO1J VANKO1J



NOTE:
SEE BACK PAGE FOR RADIO COMMUNICATION FAILURE
INITIAL CLIMB CLEARANCE 6000 FT OR AS DIRECTED BY ATC

REMARKS:
1. RNAV 1 REQUIRED
2. GNSS or DME/DME/IRU REQUIRED
3. IF UNABLE TO COMPLY WITH FLIGHT RESTRICTIONS OR RNAV 1, ADVISE ATC FOR ALTERNATIVES.
4. PILOT SHOULD PLAN FOR POSSIBLE CLIMB AS DEPICTED ON SID. ACTUAL CLIMB CLEARANCE WILL BE GIVEN BY ATC.



ALBOS1J, BONVO1J, NOBER2J, NUNLI1J, PASTO1J, SEMBO2J, OLVUK1J, UGUVO1J, TARED1J
REQUIRE MINIMUM CLIMB GRADIENT OF 255 FT PER NM (4.2%) UNTIL PASSING FL140 FOR AIRSPACE RESTRICTION ONLY.

| | | | | | | |
|-----------------------------|-----|-----|-----|-----|------|------|
| Ground Speed (KT) | 75 | 100 | 150 | 200 | 250 | 300 |
| Rate of Climb 4.2% (ft/min) | 319 | 425 | 638 | 851 | 1063 | 1276 |

BUT1J, DOSBU1J, GOMES1J, HHN1J, KASNI1J, LIPL1J, REGOS1J, RYN1J, SELKA1J, UKERA1J, VANKO1J
REQUIRE MINIMUM CLIMB GRADIENT OF 340 FT PER NM (5.6%) UNTIL PASSING FL140 FOR AIRSPACE RESTRICTION ONLY.

| | | | | | | |
|-----------------------------|-----|-----|-----|------|------|------|
| Ground Speed (KT) | 75 | 100 | 150 | 200 | 250 | 300 |
| Rate of Climb 5.6% (ft/min) | 425 | 567 | 851 | 1134 | 1418 | 1701 |

CHANGE: MAG VAR. FREQ.

99° 30' E 100° 00' E 100° 30' E 101° 00' E 101° 30' E