

STANDARD DEPARTURE CHART - INSTRUMENT (SID) - ICAO

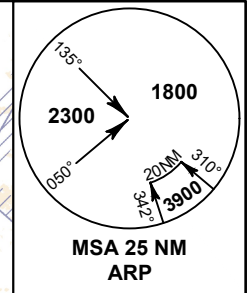
TRANSITION ALTITUDE
11000 FT

SPEED RESTRICTION
MAX IAS 250 KT AT OR BELOW ALT 10000 FT UNLESS OTHERWISE AUTHORIZED BY ATC.

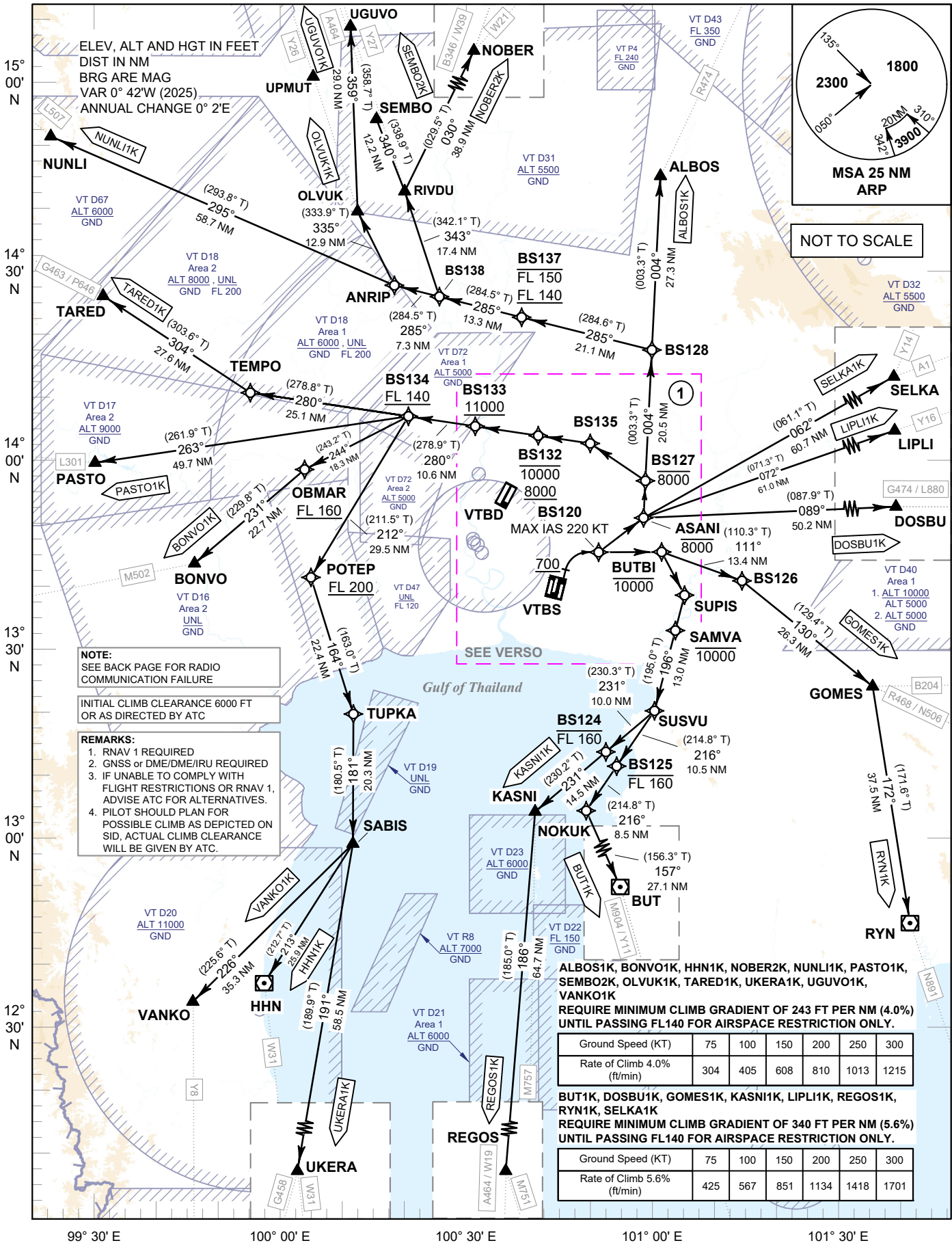
APP : 119.1, 274.5
: 120.3, 274.5
: 133.4, 274.5
: 122.35, 274.5
: 124.35, 274.5
: 125.2, 274.5
ARR : 121.1, 274.5
: 126.3, 274.5
TWR : 118.2, 262.5
DEP ATIS : 127.65

**BANGKOK/Suvarnabhumi Intl (VTBS)
RNAV RWY01**

ALBOS1K BONVO1K BUT1K DOSBU1K
GOMES1K HHN1K KASNI1K LIPLI1K
NOBER2K NUNLI1K OLVUK1K PASTO1K
REGOS1K RYN1K SELKA1K SEMBO2K
TARED1K UKERA1K UGUVO1K VANKO1K



NOT TO SCALE



NOTE:
SEE BACK PAGE FOR RADIO COMMUNICATION FAILURE

INITIAL CLIMB CLEARANCE 6000 FT OR AS DIRECTED BY ATC

REMARKS:
1. RNAV 1 REQUIRED
2. GNSS or DME/DME/IRU REQUIRED
3. IF UNABLE TO COMPLY WITH FLIGHT RESTRICTIONS OR RNAV 1, ADVISE ATC FOR ALTERNATIVES.
4. PILOT SHOULD PLAN FOR POSSIBLE CLIMB AS DEPICTED ON SID, ACTUAL CLIMB CLEARANCE WILL BE GIVEN BY ATC.

ALBOS1K, BONVO1K, HHN1K, NOBER2K, NUNLI1K, PASTO1K, SEMBO2K, OLVUK1K, TARED1K, UKERA1K, UGUVO1K, VANKO1K
REQUIRE MINIMUM CLIMB GRADIENT OF 243 FT PER NM (4.0%) UNTIL PASSING FL140 FOR AIRSPACE RESTRICTION ONLY.

Ground Speed (KT)	75	100	150	200	250	300
Rate of Climb 4.0% (ft/min)	304	405	608	810	1013	1215

BUT1K, DOSBU1K, GOMES1K, KASNI1K, LIPLI1K, REGOS1K, RYN1K, SELKA1K
REQUIRE MINIMUM CLIMB GRADIENT OF 340 FT PER NM (5.6%) UNTIL PASSING FL140 FOR AIRSPACE RESTRICTION ONLY.

Ground Speed (KT)	75	100	150	200	250	300
Rate of Climb 5.6% (ft/min)	425	567	851	1134	1418	1701

CHANGE: MAG VAR. FREQ.

99° 30' E 100° 00' E 100° 30' E 101° 00' E 101° 30' E