

**STANDARD DEPARTURE CHART - INSTRUMENT (SID) - ICAO**

TRANSITION ALTITUDE  
11000 FT

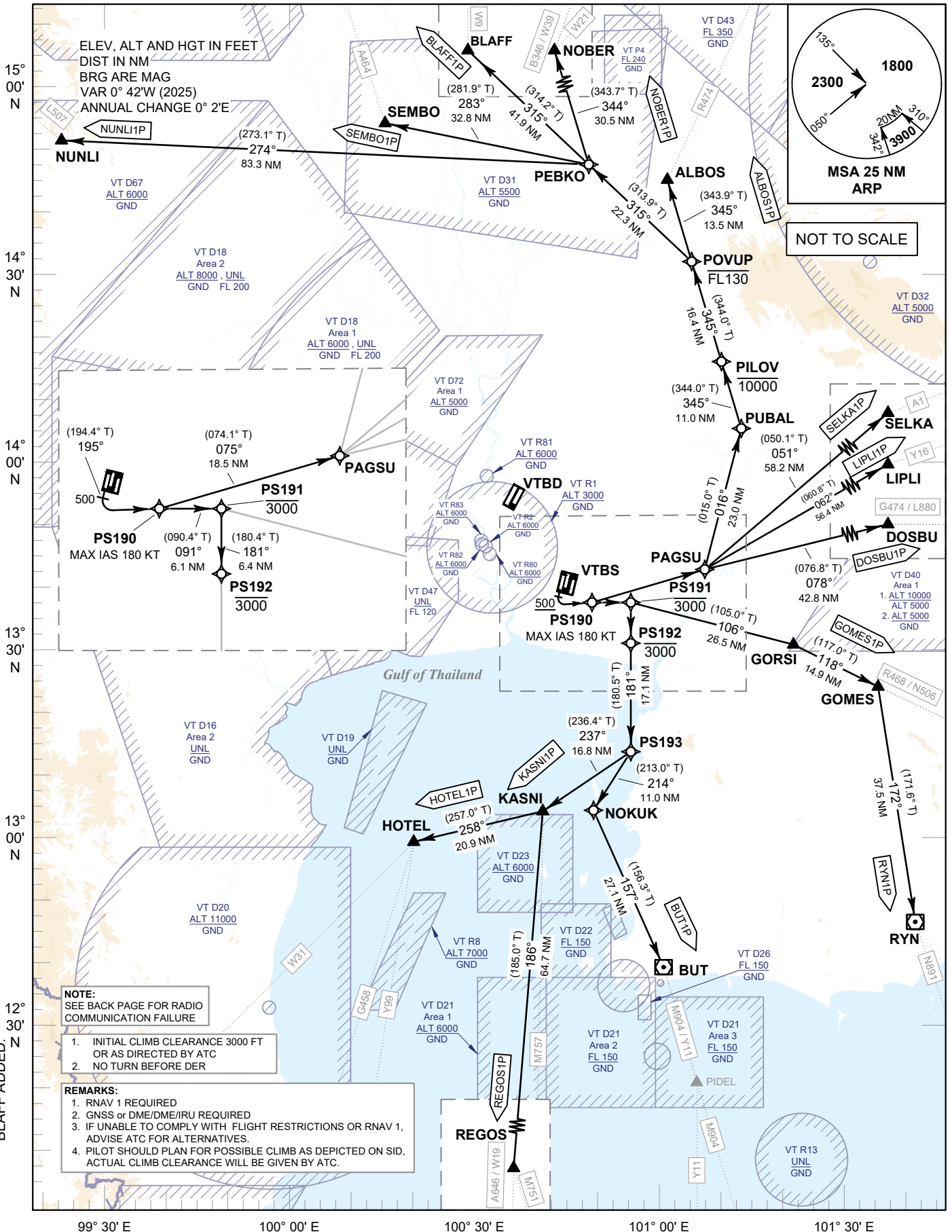
**SPEED RESTRICTION**  
MAX IAS 250 KT AT OR BELOW ALT 10000 FT UNLESS OTHERWISE AUTHORIZED BY ATC.

APP	: 119.1, 274.5
	: 120.3, 274.5
	: 133.4, 274.5
	: 122.35, 274.5
	: 124.35, 274.5
	: 125.2, 274.5
ARR	: 121.1, 274.5
	: 126.3, 274.5
TWR	: 118.2, 262.5
	: 119.0
DEP ATIS	: 127.65

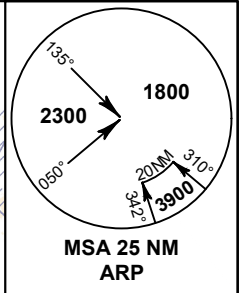
**BANGKOK/Suvarnabhumi Intl (VTBS)**

**RNAV RWY20R (PROPELLER)**

ALBOS1P BLAFF1P BUT1P DOSBU1P  
GOMES1P HOTEL1P KASNI1P LIPLI1P  
NOBER1P NUNLI1P REGOS1P RYN1P  
SELKA1P SEMBO1P



ELEV, ALT AND HGT IN FEET  
DIST IN NM  
BRG ARE MAG  
VAR 0° 42'W (2025)  
ANNUAL CHANGE 0° 2'E



NOT TO SCALE

**NOTE:**  
SEE BACK PAGE FOR RADIO COMMUNICATION FAILURE

1. INITIAL CLIMB CLEARANCE 3000 FT OR AS DIRECTED BY ATC
2. NO TURN BEFORE DER

**REMARKS:**

1. RNAV 1 REQUIRED
2. GNSS or DME/DME/IRU REQUIRED
3. IF UNABLE TO COMPLY WITH FLIGHT RESTRICTIONS OR RNAV 1, ADVISE ATC FOR ALTERNATIVES.
4. PILOT SHOULD PLAN FOR POSSIBLE CLIMB AS DEPICTED ON SID, ACTUAL CLIMB CLEARANCE WILL BE GIVEN BY ATC.

CHANGE: CHART TITLE, MAG VAR, FREQ, BLAFF ADDED.