

**STANDARD DEPARTURE CHART - INSTRUMENT (SID) - ICAO**

TRANSITION ALTITUDE  
11000 FT

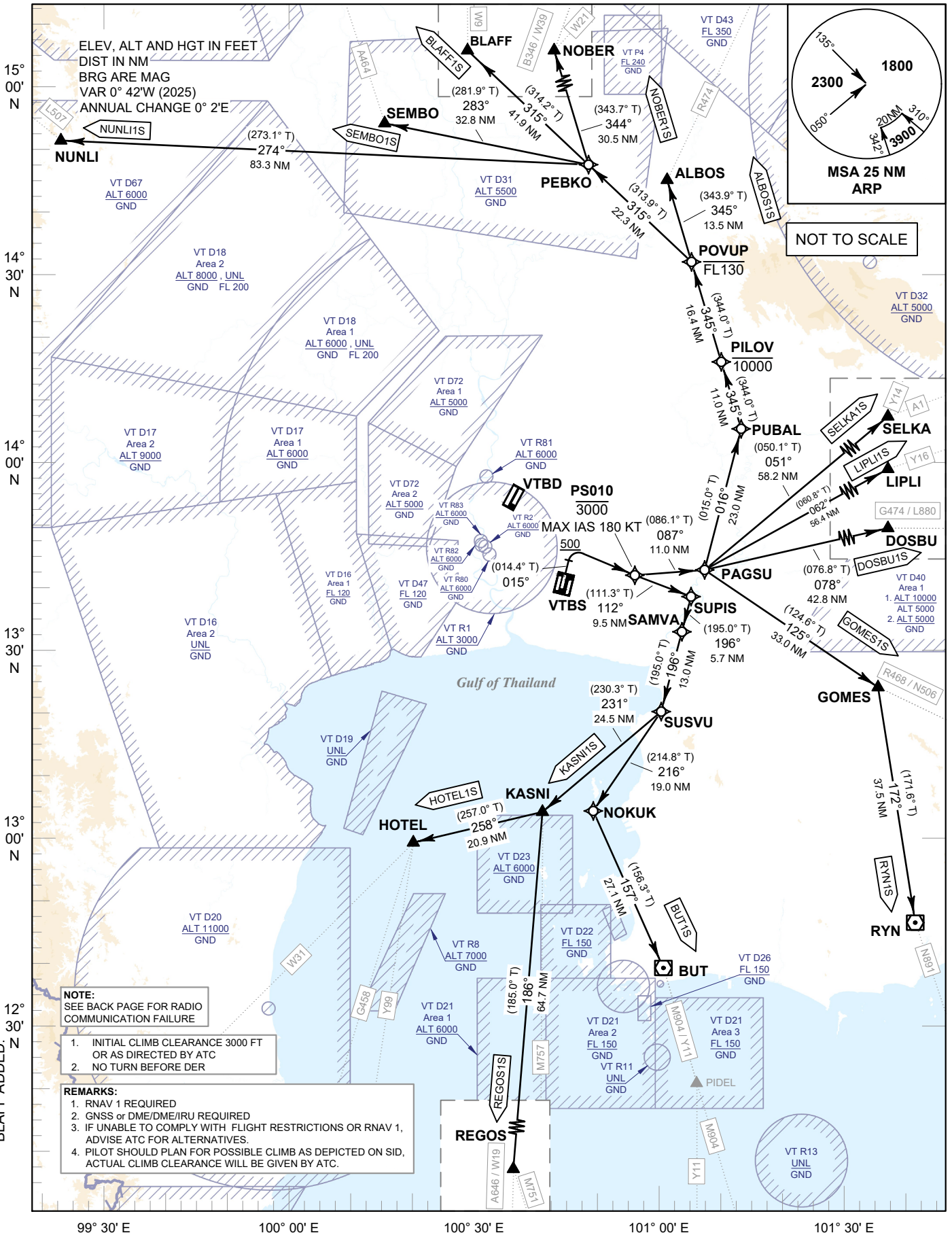
**SPEED RESTRICTION**  
MAX IAS 250 KT AT OR BELOW ALT 10000 FT UNLESS OTHERWISE AUTHORIZED BY ATC.

APP : 119.1, 274.5  
: 120.3, 274.5  
: 133.4, 274.5  
: 122.35, 274.5  
: 124.35, 274.5  
: 125.2, 274.5  
ARR : 121.1, 274.5  
: 126.3, 274.5  
TWR : 118.2, 262.5  
DEP ATIS : 127.65

**BANGKOK/Suvarnabhumi Intl (VTBS)**

**RNAV RWY02R (PROPELLER)**

ALBOS1S BLAFF1S BUT1S DOSBU1S  
GOMES1S HOTEL1S KASNI1S LIPLI1S  
NOBER1S NUNLI1S REGOS1S RYN1S  
SELKA1S SEMBO1S



CHANGE: CHART TITLE, MAG VAR, FREQ.  
BLAFF ADDED.

**NOTE:**  
SEE BACK PAGE FOR RADIO COMMUNICATION FAILURE

1. INITIAL CLIMB CLEARANCE 3000 FT OR AS DIRECTED BY ATC NO TURN BEFORE DER

- REMARKS:**
1. RNAV 1 REQUIRED
  2. GNSS or DME/DME/IRU REQUIRED
  3. IF UNABLE TO COMPLY WITH FLIGHT RESTRICTIONS OR RNAV 1, ADVISE ATC FOR ALTERNATIVES.
  4. PILOT SHOULD PLAN FOR POSSIBLE CLIMB AS DEPICTED ON SID, ACTUAL CLIMB CLEARANCE WILL BE GIVEN BY ATC.