

**STANDARD DEPARTURE CHART - INSTRUMENT (SID) - ICAO**

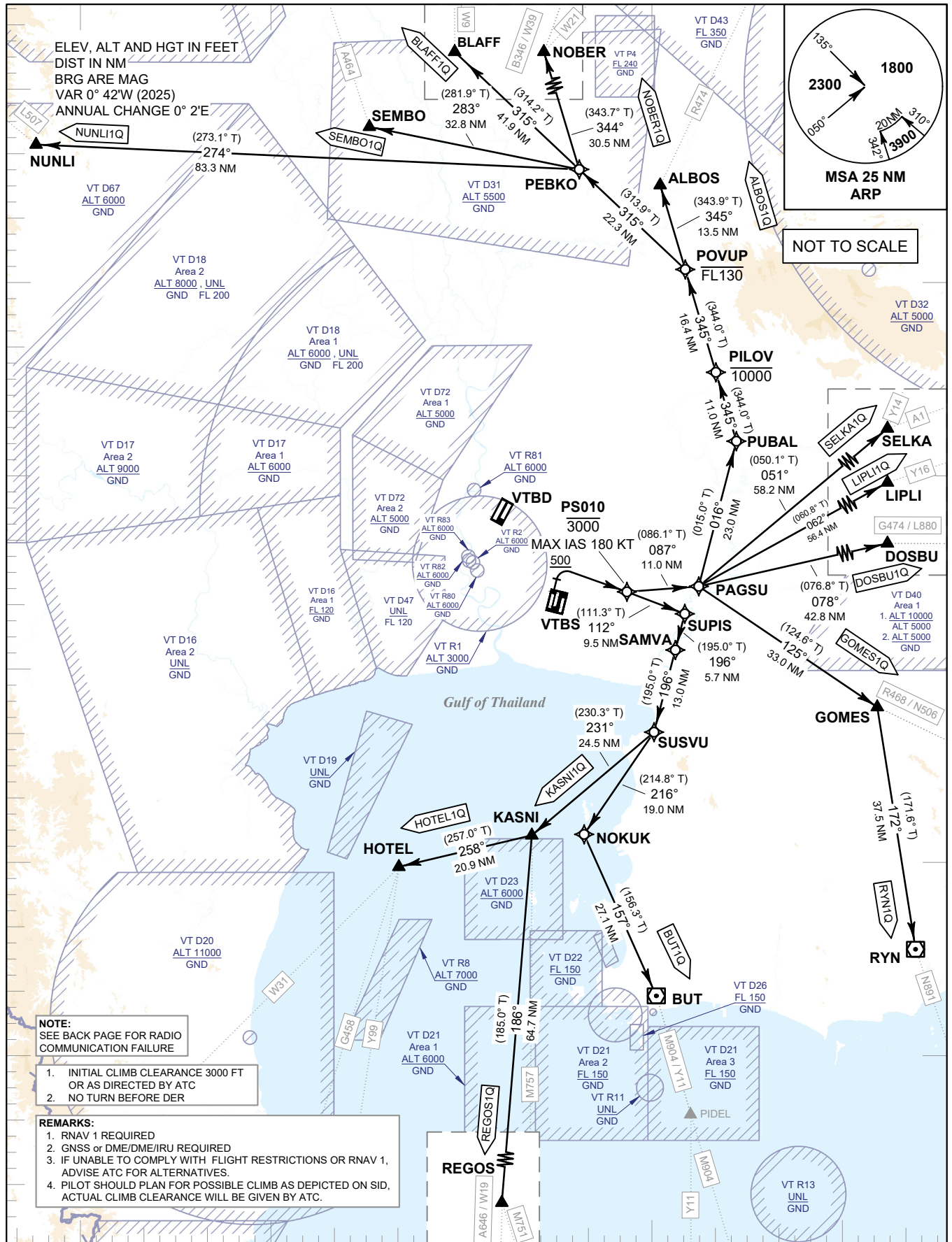
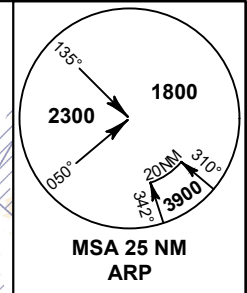
TRANSITION ALTITUDE  
11000 FT

**SPEED RESTRICTION**  
MAX IAS 250 KT AT OR BELOW ALT 10000 FT UNLESS OTHERWISE AUTHORIZED BY ATC.

APP : 119.1, 274.5  
: 120.3, 274.5  
: 133.4, 274.5  
: 122.35, 274.5  
: 124.35, 274.5  
: 125.2, 274.5  
ARR : 121.1, 274.5  
: 126.3, 274.5  
TWR : 118.2, 262.5  
DEP ATIS : 127.65

**BANGKOK/Suvarnabhumi Intl (VTBS)  
RNAV RWY02L  
(PROPELLER)**

ALBOS1Q BLAFF1Q BUT1Q DOSBU1Q  
GOMES1Q HOTEL1Q KASNI1Q LIPLI1Q  
NOBER1Q NUNLI1Q REGOS1Q RYN1Q  
SELKA1Q SEMBO1Q



CHANGE: CHART TITLE, MAG VAR, FREQ.  
BLAFF ADDED.

99° 30' E      100° 00' E      100° 30' E      101° 00' E      101° 30' E