

STANDARD DEPARTURE CHART - INSTRUMENT (SID) - ICAO

TRANSITION ALTITUDE
11000 FT

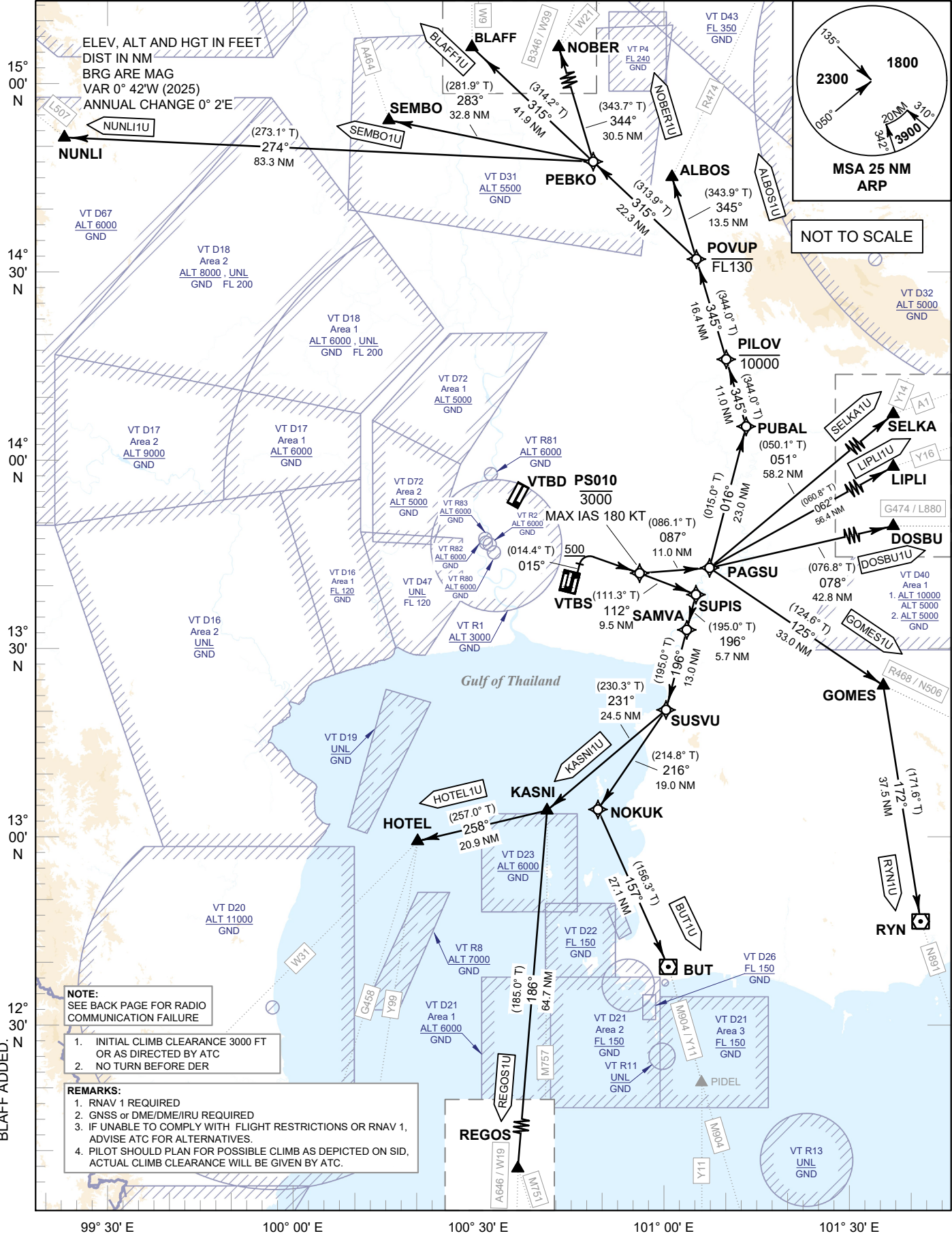
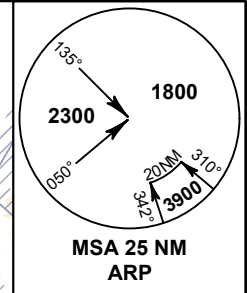
SPEED RESTRICTION
MAX IAS 250 KT AT OR BELOW ALT 10000 FT UNLESS OTHERWISE AUTHORIZED BY ATC.

APP : 119.1, 274.5
: 120.3, 274.5
: 133.4, 274.5
: 122.35, 274.5
: 124.35, 274.5
: 125.2, 274.5
ARR : 121.1, 274.5
: 126.3, 274.5
TWR : 118.2, 262.5
DEP ATIS : 127.65

BANGKOK/Suvarnabhumi Intl (VTBS)

RNAV RWY01 (PROPELLER)

ALBOS1U BLAFF1U BUT1U DOSBU1U
GOMES1U HOTEL1U KASNI1U LIPLI1U
NOBER1U NUNLI1U REGOS1U RYN1U
SELKA1U SEMBO1U



ELEV, ALT AND HGT IN FEET
DIST IN NM
BRG ARE MAG
VAR 0° 42'W (2025)
ANNUAL CHANGE 0° 2'E

NOTE:
SEE BACK PAGE FOR RADIO COMMUNICATION FAILURE

1. INITIAL CLIMB CLEARANCE 3000 FT OR AS DIRECTED BY ATC
2. NO TURN BEFORE DER

- REMARKS:**
1. RNAV 1 REQUIRED
 2. GNSS or DME/DME/IRU REQUIRED
 3. IF UNABLE TO COMPLY WITH FLIGHT RESTRICTIONS OR RNAV 1, ADVISE ATC FOR ALTERNATIVES.
 4. PILOT SHOULD PLAN FOR POSSIBLE CLIMB AS DEPICTED ON SID, ACTUAL CLIMB CLEARANCE WILL BE GIVEN BY ATC.

CHANGE: CHART TITLE, MAG VAR, FREQ, BLAFF ADDED.

99° 30' E 100° 00' E 100° 30' E 101° 00' E 101° 30' E