

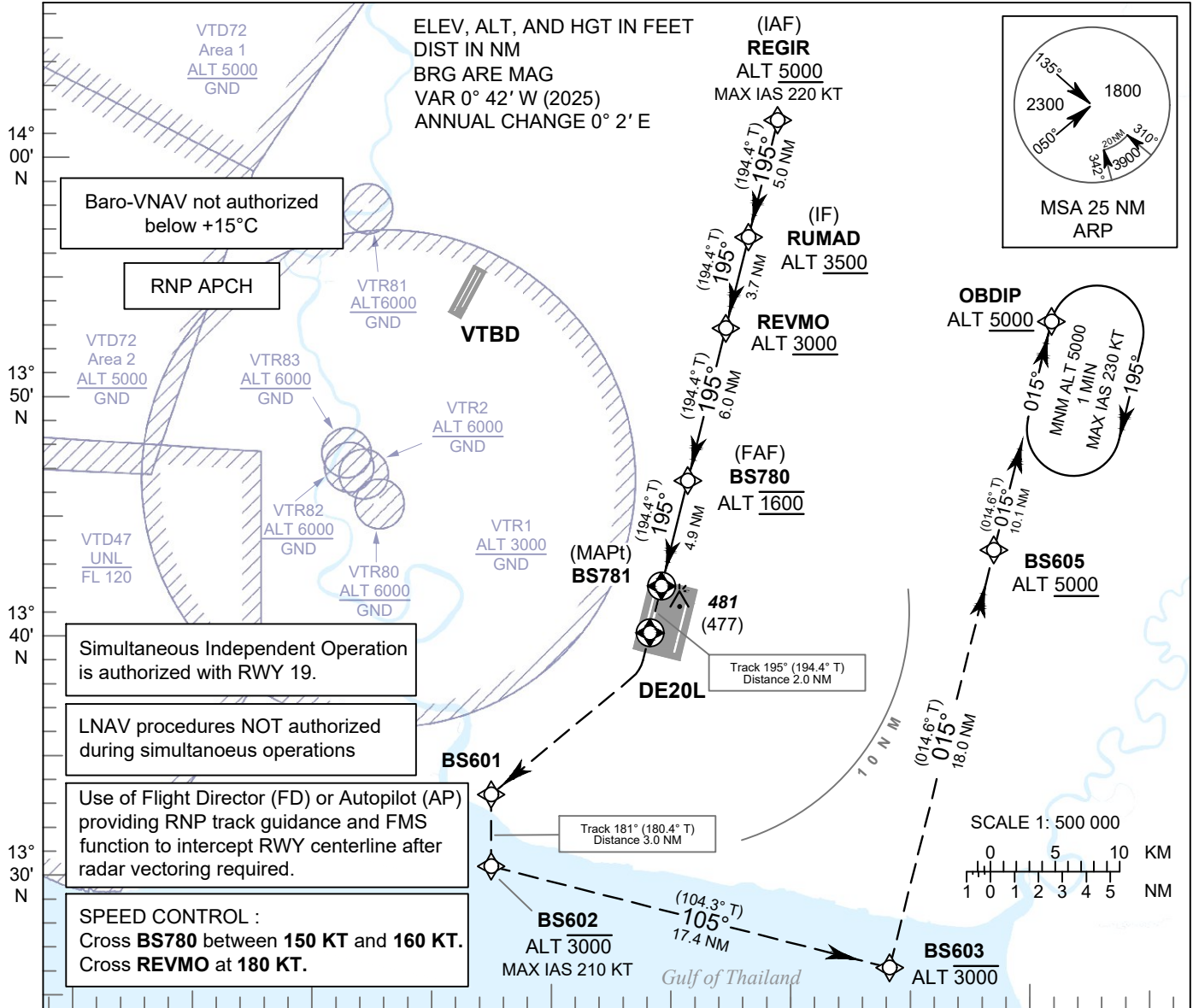
**INSTRUMENT APPROACH CHART - ICAO**

**AERODROME ELEV 8 FT**  
**HEIGHTS RELATED TO THR RWY20L - ELEV 4 FT**

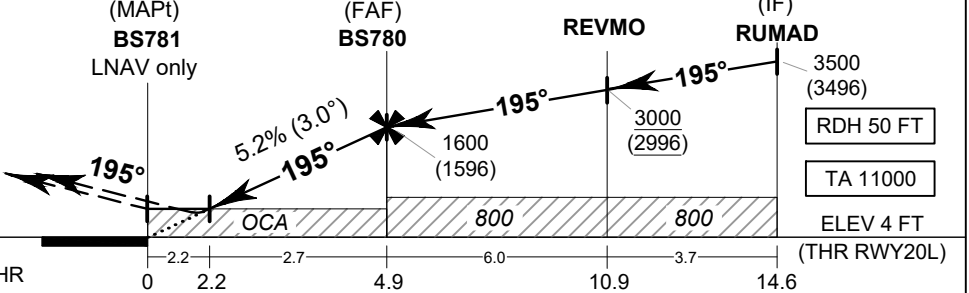
APP	: 119.1, 274.5
	: 120.3, 274.5
	: 133.4, 274.5
	: 122.35, 274.5
	: 124.35, 274.5
	: 125.2, 274.5
ARR	: 121.1, 274.5
	: 126.3, 274.5
TWR	: 118.2, 262.5
	: 119.0
ARR ATIS	: 133.6, 278.6

**BANGKOK / Suvarnabhumi Intl (VTBS)**

**RNP RWY20L**



**MISSED APPROACH:**  
**No turn before MAPt.**  
 At MAPt, climb to DE20L, then turn right to BS601, turn left to BS602 and climb up to 3000 FT, turn left to BS603, turn left to BS605 at minimum 5000 FT, then proceed to OBDIP at minimum 5000 FT and hold or as directed by ATC.



	NM FM THR											
					0	2.2	2.7	4.9	6.0	10.9	14.6	
OCA/H	A	B	C	D	NM to NEXT WPT	2.2 NM	3 NM	4 NM	FAF			
LNAV / VNAV	600 (596)				Altitude (Height)	750 (746)	1005 (1001)	1320 (1316)	1600 (1596)			
LNAV	750 (746)				Ground speed	knot	70	90	100	120	140	160
Circling (OCH AAL)	800 (792)		900 (892)		Rate of descent FAF-MAPT 5.2%	ft/min	369	474	527	632	737	843

CHANGE: REQUIREMENT BOX. FREQ.