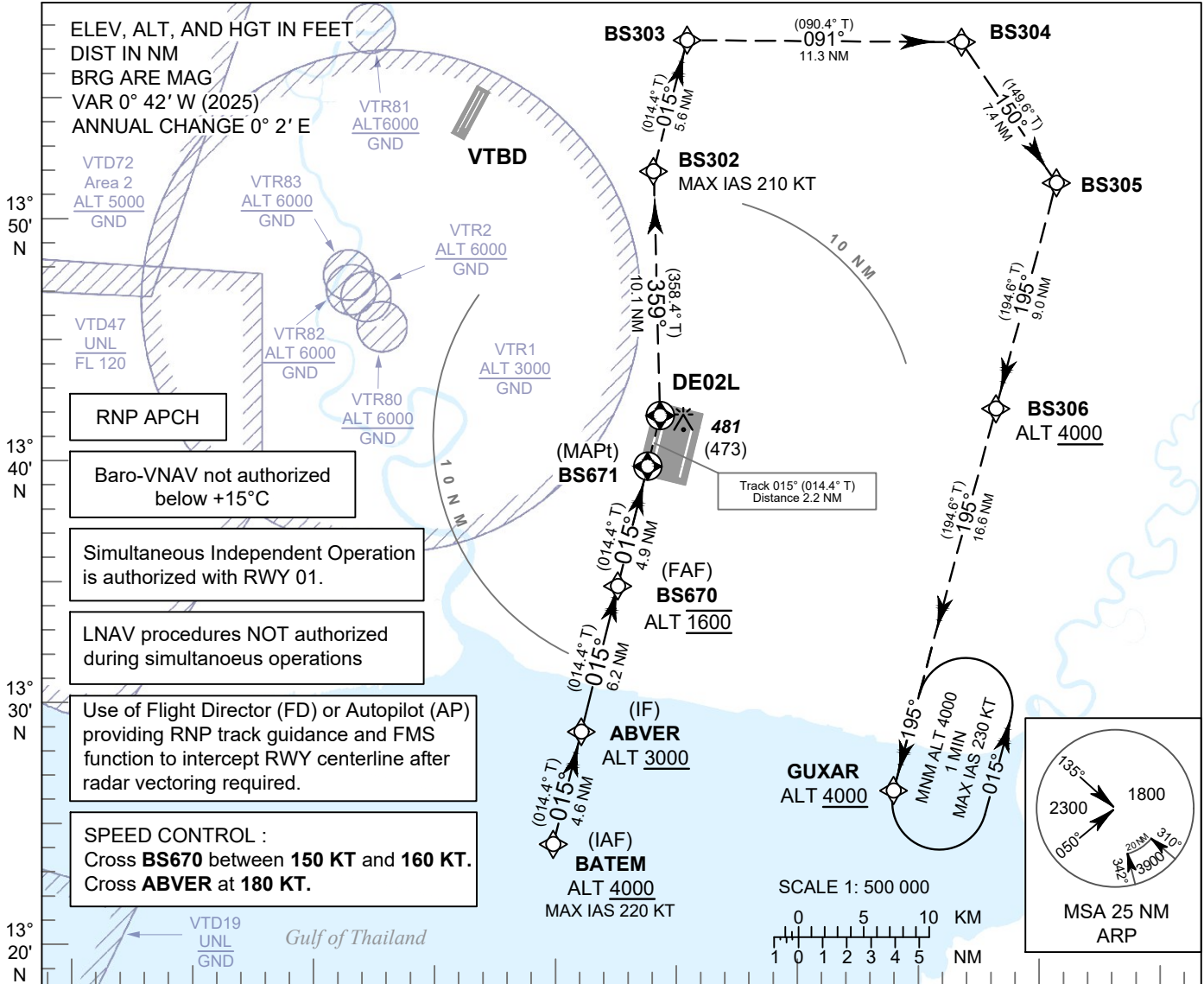


INSTRUMENT APPROACH CHART - ICAO **AERODROME ELEV 8 FT**
 HEIGHTS RELATED TO
 THR RWY02L - ELEV 8 FT

APP	: 119.1, 274.5
	: 120.3, 274.5
	: 133.4, 274.5
	: 122.35, 274.5
	: 124.35, 274.5
	: 125.2, 274.5
ARR	: 121.1, 274.5
	: 126.3, 274.5
TWR	: 118.2, 262.5
	: 119.0
ARR ATIS	: 133.6, 278.6

BANGKOK / Suvarnabhumi Intl (VTBS)
RNP RWY02L



RNP APCH

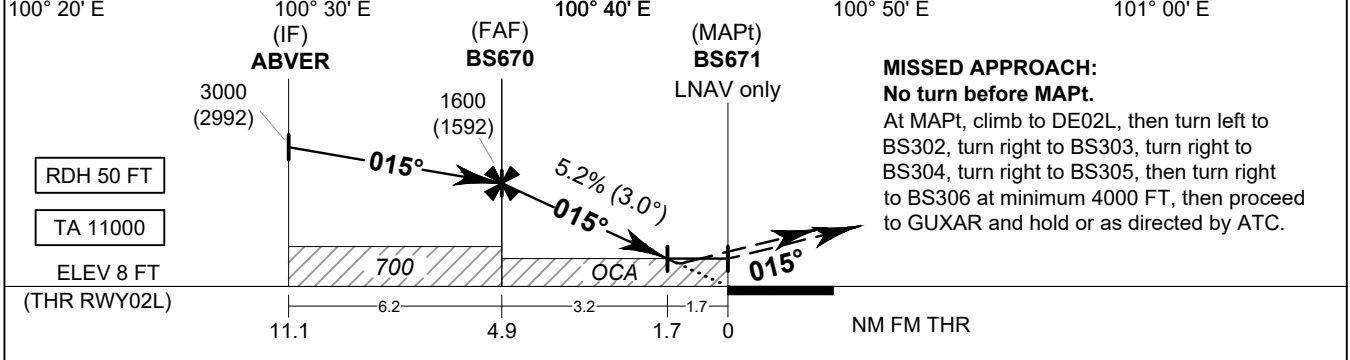
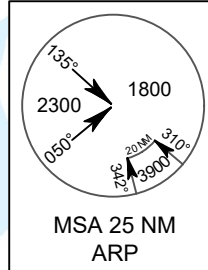
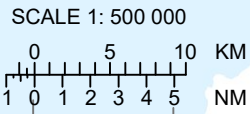
Baro-VNAV not authorized below +15°C

Simultaneous Independent Operation is authorized with RWY 01.

LNAV procedures NOT authorized during simultaneous operations

Use of Flight Director (FD) or Autopilot (AP) providing RNP track guidance and FMS function to intercept RWY centerline after radar vectoring required.

SPEED CONTROL :
 Cross **BS670** between **150 KT** and **160 KT**.
 Cross **ABVER** at **180 KT**.



MISSED APPROACH:
No turn before MAPt.
 At MAPt, climb to DE02L, then turn left to BS302, turn right to BS303, turn right to BS304, turn right to BS305, then turn right to BS306 at minimum 4000 FT, then proceed to GUXAR and hold or as directed by ATC.

OCA/H	A	B	C	D	NM to NEXT WPT	FAF	4 NM	3 NM	2 NM	1.7 NM		
LNAV / VNAV	540 (532)				Altitude (Height)	1600 (1592)	1320 (1312)	1005 (997)	690 (682)	600 (592)		
LNAV	600 (592)				Ground speed	knot	70	90	100	120	140	160
Circling (OCH AAL)	800 (792)		900 (892)		Rate of descent FAF-MAPt 5.2%	ft/min	369	474	527	632	737	843

CHANGE: REQUIREMENT BOX. FREQ.